

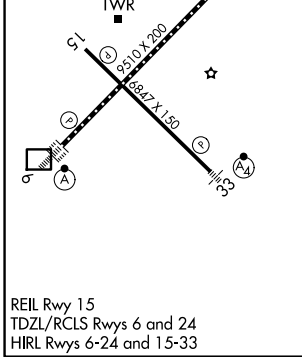
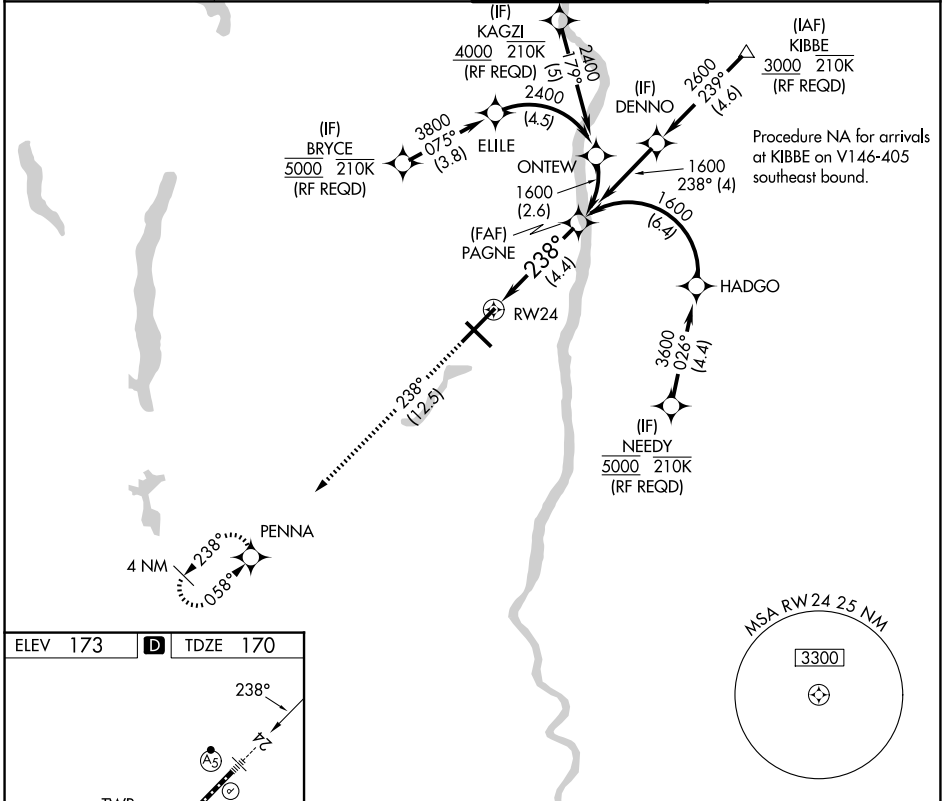
APP CRS	Rwy Ldg	<b>9509</b>
<b>238°</b>	TDZE	<b>170</b>
	Apf Elev	<b>173</b>

# RNAV (RNP) Z RWY 24

BRADLEY INTL (BDL)

	For uncompensated Baro-VNAV systems, procedure NA below -18°C (0°F) or above 54°C (130°F). GPS required. For inop ALS, increase all Cats visibility to 1½ SM.	MALSR		MISSED APPROACH: Climb to 3000 on track 238° to PENNA and hold.

D-ATIS <b>118.15</b>	BRADLEY APP CON <b>123.95 290.55</b> (061°-240°) <b>125.35 281.5</b> (241°-060°)	BRADLEY TOWER <b>120.3 351.8</b>	GND CON <b>121.9 348.6</b>
-------------------------	--	-------------------------------------	-------------------------------



ELEV 173	<b>D</b>	TDZE 170
3000	PENNA	VGSI and RNAV glidepath not coincident (VGSI Angle 3.00/TCH 71).
tr 238°		
RW24		PAGNE 1600
		GP 3.00° TCH 55
See planview for multiple IF locations.		
4.4 NM		

CATEGORY	A	B	C	D
RNP 0.30 DA	622/60 452 (500-1½)			

REIL Rwy 15  
 TDZL/RCLS Rwys 6 and 24  
 HIRL Rwys 6-24 and 15-33

**AUTHORIZATION REQUIRED**

NE-1, 11 JUN 2026 to 09 JUL 2026

NE-1, 11 JUN 2026 to 09 JUL 2026