

WAAS CH <b>70419</b> <b>W22A</b>	APP CRS <b>222°</b>	Rwy Ldg TDZE Apt Elev	<b>5675</b> <b>4310</b> <b>4314</b>
--	------------------------	-----------------------------	---

# RNAV (GPS) RWY 22

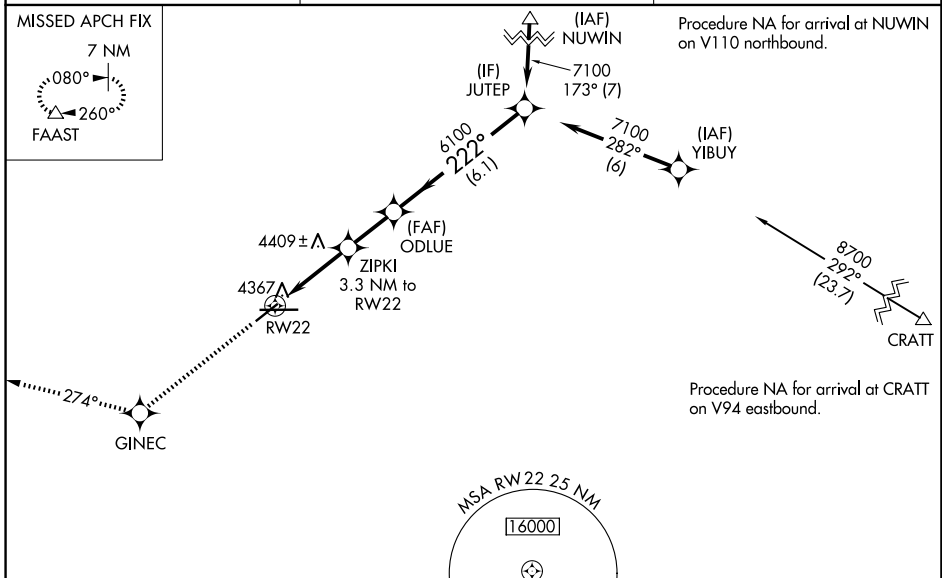
DEMING MUNI (DMN)

RNP APCH - GPS.

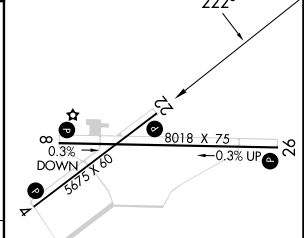
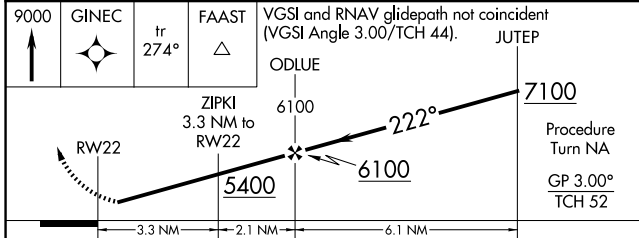
**⚠** For uncompensated Baro-VNAV systems, LNAV/VNAV NA below -23°C or above 40°C. Baro-VNAV NA when using Las Cruces altimeter setting. When local altimeter setting not received, use Las Cruces altimeter setting and increase all DA 114 feet and all MDA 120 feet; increase LPV and LNAV/VNAV all Cats visibility ¼ mile, increase LNAV Cats C and D visibility ¼ mile, increase Circling Cat B visibility ¼ mile and Circling Cats C and D visibility ½ mile. Rwy 22 helicopter visibility reduction below 1 SM NA. Straight-in Rwy 22 NA at night, Circling Rwy 22, 26 NA at night.

**MISSED APPROACH:**  
Climb to 9000 direct GINEC and on track 274° to FAAST and hold.

ASOS <b>118.525</b>	ALBUQUERQUE CENTER <b>128.2 285.5</b>	UNICOM <b>122.8 (CTAF) 0</b>
------------------------	--	---------------------------------



ELEV 4314	TDZE 4310
-----------	-----------



CATEGORY	A	B	C	D
LPV DA		4560-1	250 (300-1)	
LNAV/VNAV DA		4637-1 ¼	327 (400-1 ¼)	
LNAV MDA	4660-1	350 (400-1)		4660-1 ¼ 350 (400-1 ¼)
CIRCLING	4820-1 506 (600-1)	4940-1 626 (700-1)	5020-2 706 (800-2)	5020-2 ¼ 706 (800-2 ¼)

MIRL Rwy 4-22  
MIRL Rwy 8-26 0

SW-1, 11 JUN 2026 to 09 JUL 2026

SW-1, 11 JUN 2026 to 09 JUL 2026