

ALTUS, OKLAHOMA

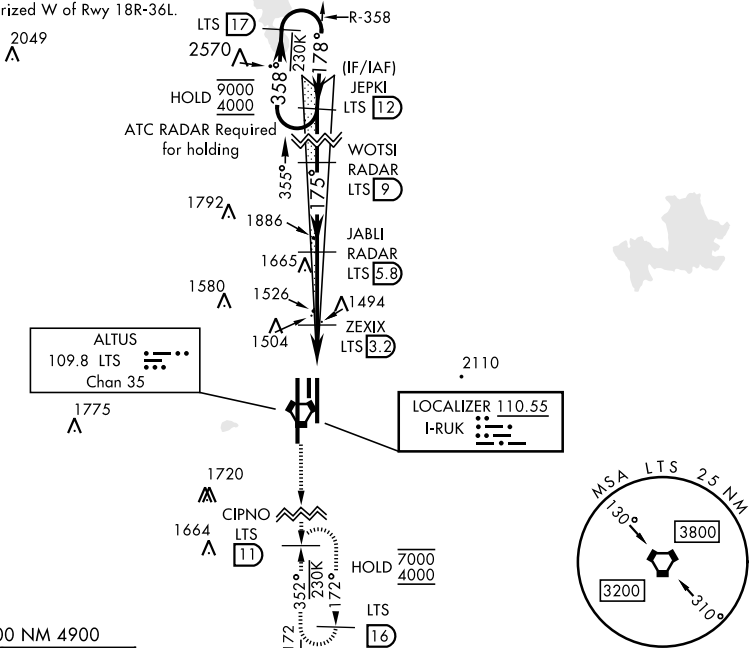
ILS or LOC RWY 18L

LOC I-RUK 110.55	APCH CRS 175°	Rwy Idg TDZE Arpt Elev 9001 1382 1382	[USAF]	ALTUS AFB (KLTS)
----------------------------	-------------------------	---	--------	------------------

DME or RADAR required.	SALSF A2	MISSED APPROACH: Climb to 4000, intercept LTS VORTAC R-172 to CIPNO and hold.
------------------------	--------------------	---

ATIS ★ 109.8 273.5	FORT WORTH CENTER 133.5 350.35	APP CON 125.1 353.7	TOWER ★ 119.65 254.4	GND CON 121.85 275.8
------------------------------	--	-------------------------------	--------------------------------	--------------------------------

***Circling not authorized W of Rwy 18R-36L.



EMERG SAFE ALT 100 NM 4900

ELEV	1382	TDZE	1382		
CATEGORY	A	B	C	D	E
S-ILS 18L	1582/40		200	(200-¾)	
S-LOC 18L*	1760/40		378	(400-¾)	
CIRCLING ***	1780-1	1840-1	1880-1½	2080-2¼	2180-2¾
	398 (400-1)	458 (500-1)	498 (500-1½)	698 (700-2¼)	798 (800-2¾)
WITHOUT LAST STEPDOWN FIX					
S-LOC 18L**	2040/40	658 (700-¾)	2040-1½	658	(700-1½)
CIRCLING ***	2040-1	658 (700-1)	2040-1½	2080-2¼	2180-2¾
			658 (700-1½)	698 (700-2¼)	798 (800-2¾)

ALTUS, OKLAHOMA

34° 40' N-99° 16' W

ALTUS AFB (KLTS)

Amtd 5 20APR23

ILS or LOC RWY 18L

SC-1, 11 JUN 2026 to 09 JUL 2026

SC-1, 11 JUN 2026 to 09 JUL 2026