

ALTUS, OKLAHOMA

ILS or RNAV (GPS) Y RWY 18R

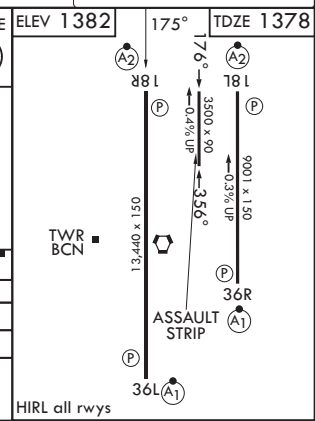
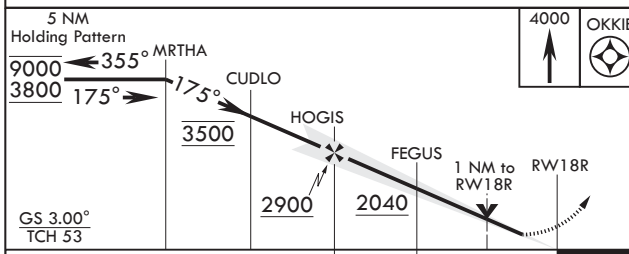
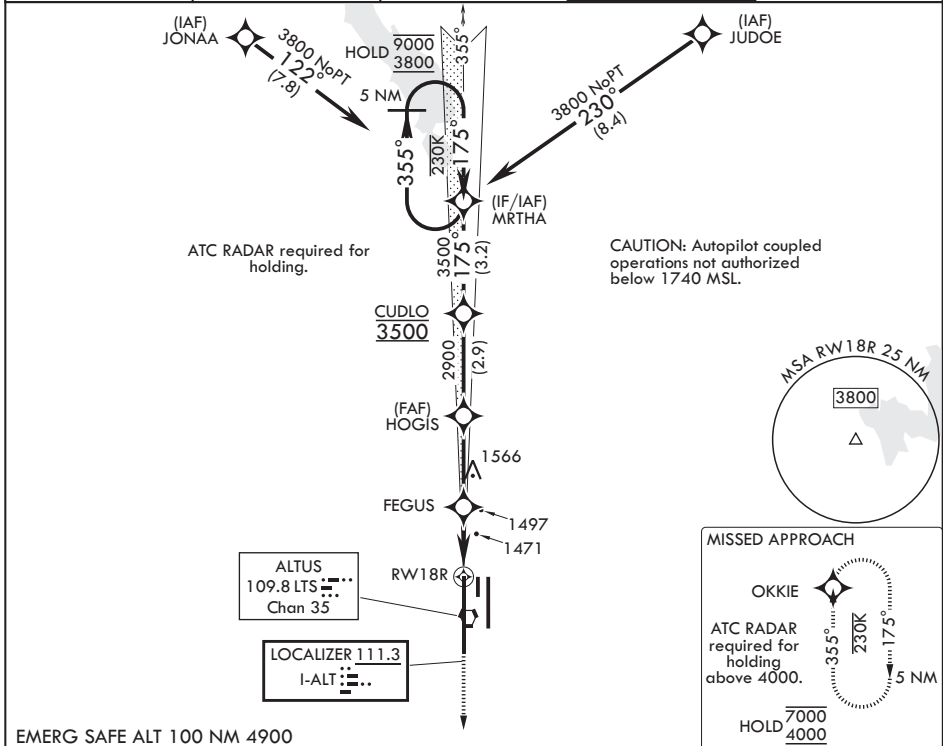
LOC I-ALT 111.3	APCH CRS 175°	Rwy ldg 13,440
		TDZE 1378
		Arpt Elev 1382

(USAF)

ALTUS AFB (KLTS)

RNP APCH - GPS. RNAV1 - GPS for ILS.	SALSF	MISSED APPROACH: Climb to 4000 direct OKKIE and hold.
<p>▼ * When ALS inop, increase CAT AB RVR to 55, vis to 1 mile; CAT CDE RVR to 60, vis to 1 1/8 miles.</p> <p>** Circling not authorized W of Rwy 18R-36L.</p>	(A2)	

ATIS* 109.8 273.5	FORT WORTH CENTER 133.5 350.35	APP CON 125.1 353.7	TOWER* 119.65 254.4	GND CON 121.85 275.8
-----------------------------	--	-------------------------------	-------------------------------	--------------------------------



CATEGORY	A	B	C	D	E
S-ILS 18R	1578/40		200	(200-¾)	
LNAV MDA*	1760/40 382 (400-¾)		1760/45	382 (400-¾)	
CIRCLING**	1780-1 398 (400-1)	1840-1 458 (500-1)	1880-1½ 498 (500-1½)	2080-2¼ 698 (700-2¼)	2300-3 918 (1000-3)

ALTUS, OKLAHOMA

34°40'N - 99°16'W

ALTUS AFB (KLTS)

Amdt 2 14MAY26

ILS or RNAV (GPS) Y RWY 18R

SC-1, 11 JUN 2026 to 09 JUL 2026

SC-1, 11 JUN 2026 to 09 JUL 2026