

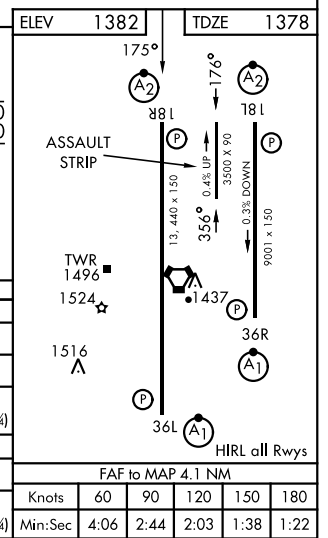
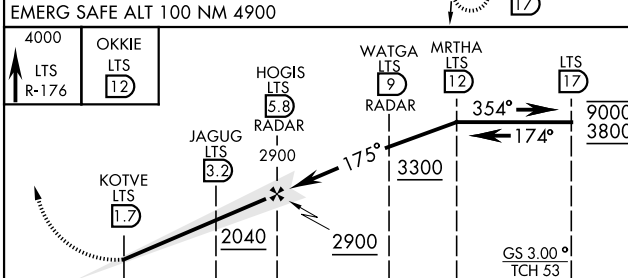
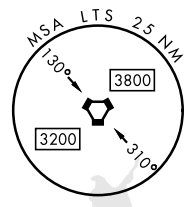
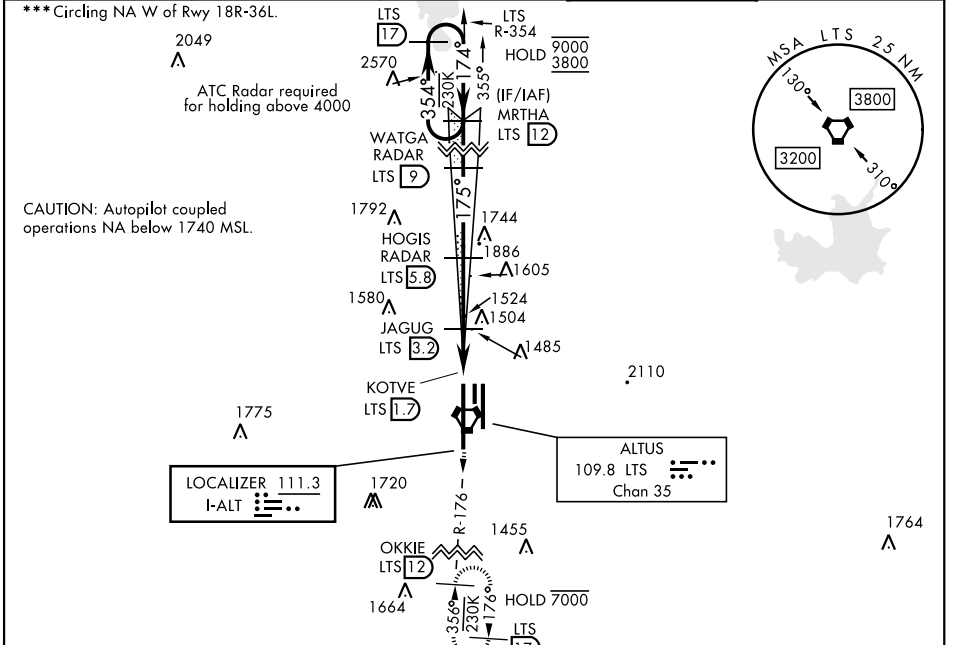
ALTUS, OKLAHOMA

ILS Z or LOC RWY 18R

LOC I-ALT 111.3	APCH CRS 175°	Rwy Idg 13,440 TDZE 1378 Arpt Elev 1382	[USAF]	ALTUS AFB (KLTS)
---------------------------	-------------------------	--	--------	------------------

DME or RADAR required.	SALSF A2	MISSED APPROACH: Climb to 4000, intercept LTS VORTAC R-176 to OKKIE and hold.
------------------------	--------------------	---

ATIS ★ 109.8 273.5	FORT WORTH CENTER 133.5 350.35	APP CON 125.1 353.7	TOWER ★ 119.65 254.4	GND CON 121.85 275.8
------------------------------	--	-------------------------------	--------------------------------	--------------------------------



CATEGORY	A	B	C	D	E
S-ILS 18R	1578/40		200	(200-¾)	
S-LOC 18R*	1760/40	382 (400-¾)	1760/45	382	(400-¾)
CIRCLING***	1780-1 398 (400-1)	1840-1 458 (500-1)	1880-1½ 498 (500-1½)	2080-2¼ 698 (700-2¼)	2180-2¾ 798 (800-2¾)
LOCAL ALTIMETER, WITHOUT LAST STEPDOWN FIX					
S-LOC 18R**	2040/40	662 (700-¾)	2040-1¾	662	(500-1¾)
CIRCLING***	2040-1	658 (700-1)	2040-1¾ 658 (700-1¾)	2080-2¼ 698 (700-2¼)	2180-2¾ 798 (800-2¾)

ALTUS, OKLAHOMA 34° 40' N-99° 16' W ALTUS AFB (KLTS)

Amdt 2 14JUL22

ILS Z or LOC RWY 18R

SC-1, 11 JUN 2026 to 09 JUL 2026

SC-1, 11 JUN 2026 to 09 JUL 2026