

# RNAV (GPS)-A

APCH CRS <b>215°</b>	Rwy Idg TDZE Arprt Elev	N/A N/A <b>1382</b>
-------------------------	-------------------------------	---------------------------

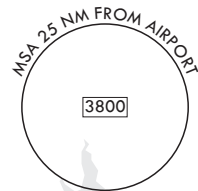
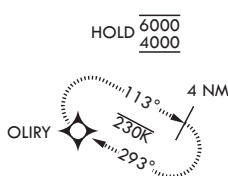
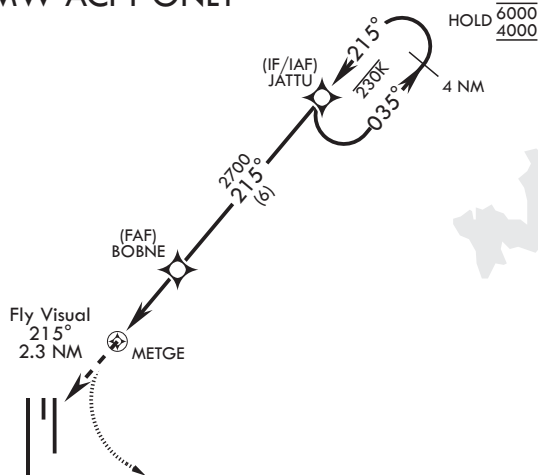
(USAF)

ALTUS AFB (KLTS)

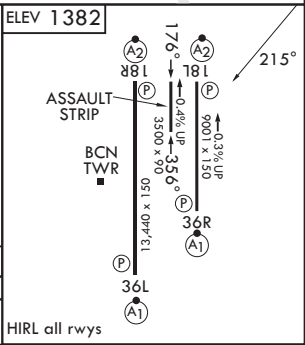
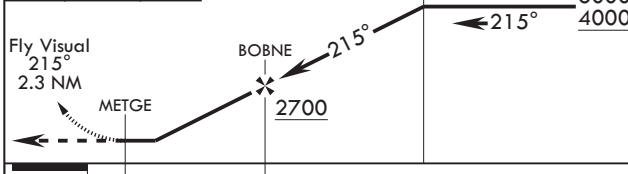
RNP APCH-GPS	MISSED APPROACH: Climb to 2200, then climbing left turn to 4000 direct OLIRY and hold.
RADAR required	
Circling NA W of Rwy 18R-36L	

ATIS★ <b>109.8 273.5</b>	FORT WORTH CENTER <b>133.5 350.35</b>	APP CON <b>125.1 353.7</b>	TOWER★ <b>119.65 254.4</b>	GND CON <b>121.85 275.8</b>
-----------------------------	--	-------------------------------	-------------------------------	--------------------------------

**FOR USE BY 97  
AMW ACFT ONLY**



EMERG SAFE ALT 100 NM 4900



CATEGORY	A	B	C	D	E
CIRCLING	NA			2080-3 698 (700-3)	2300-3 918 (1000-3)

HIRL all rwys

# RNAV (GPS)-A

SC-1, 11 JUN 2026 to 09 JUL 2026

SC-1, 11 JUN 2026 to 09 JUL 2026