

ALTUS, OKLAHOMA

RNAV (GPS) Z RWY 18R

APCH CRS	Rwy Idg	13,440
175°	TDZE	1378
	Arprt Elev	1382

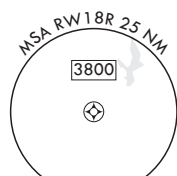
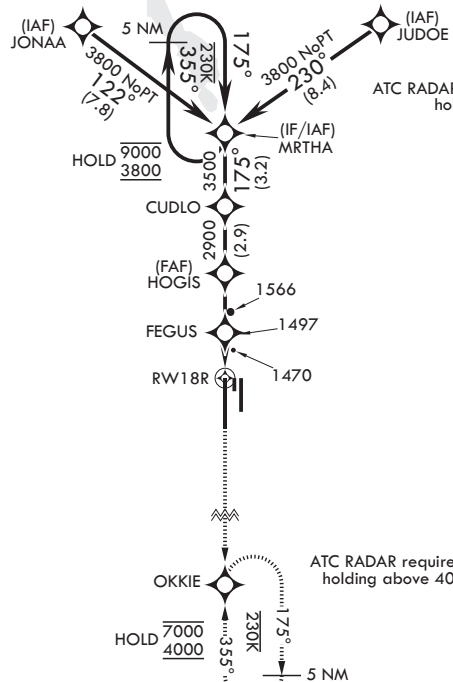
(USAF)

ALTUS AFB (KLTS)

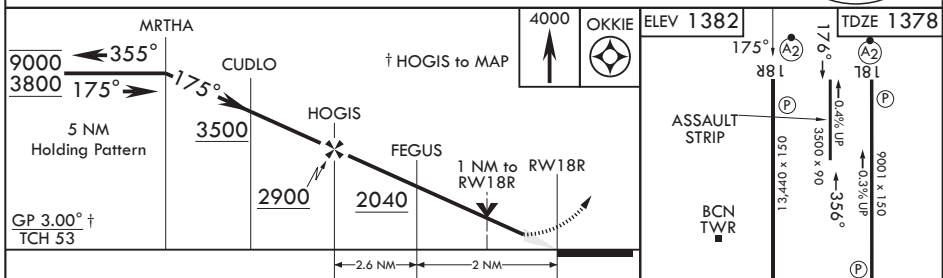
RNP APCH-GPS	SALSF	MISSED APPROACH: Climb to 4000 direct OKKIE and hold.
<p>V * When ALS inop increase RVR to 45, vis to 7/8 mile. ** When ALS inop, increase CAT AB RVR to 55, vis to 1 mile; CAT CDE RVR to 60, vis to 1 1/8 miles. *** Circling NA W of Rwy 18R-36L.</p>		

ATIS★ 109.8 273.5	FORT WORTH CENTER 133.5 350.35	APP CON 125.1 353.7	TOWER★ 119.65 254.4	GND CON 121.85 275.8
----------------------	-----------------------------------	------------------------	------------------------	-------------------------

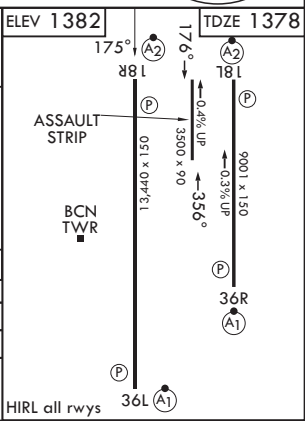
For uncompensated Baro-VNAV systems, procedure NA below -17°C (130°F) or above 54°C (130°F).



EMERG SAFE ALT 100 NM 4900



CATEGORY	A	B	C	D	E
LNAV/VNAV DA*	1660/40		282	(300-¾)	
LNAV MDA**	1760/40	382 (400-¾)	1760/45	382	(400-¾)
CIRCLING***	1780-1 398 (400-1)	1840-1 458 (500-1)	1880-1½ 498 (500-1½)	2080-2¼ 698 (700-2¼)	2300-3 918 (1000-3)



ALTUS, OKLAHOMA
Amdt 3 14MAY26

34°40'N - 99°16'W

ALTUS AFB (KLTS)

RNAV (GPS) Z RWY 18R

SC-1, 11 JUN 2026 to 09 JUL 2026

SC-1, 11 JUN 2026 to 09 JUL 2026