

APP CRS	Rwy Idg	6001
302°	TDZE	72
	Apt Elev	79

RNAV (GPS) RWY 30

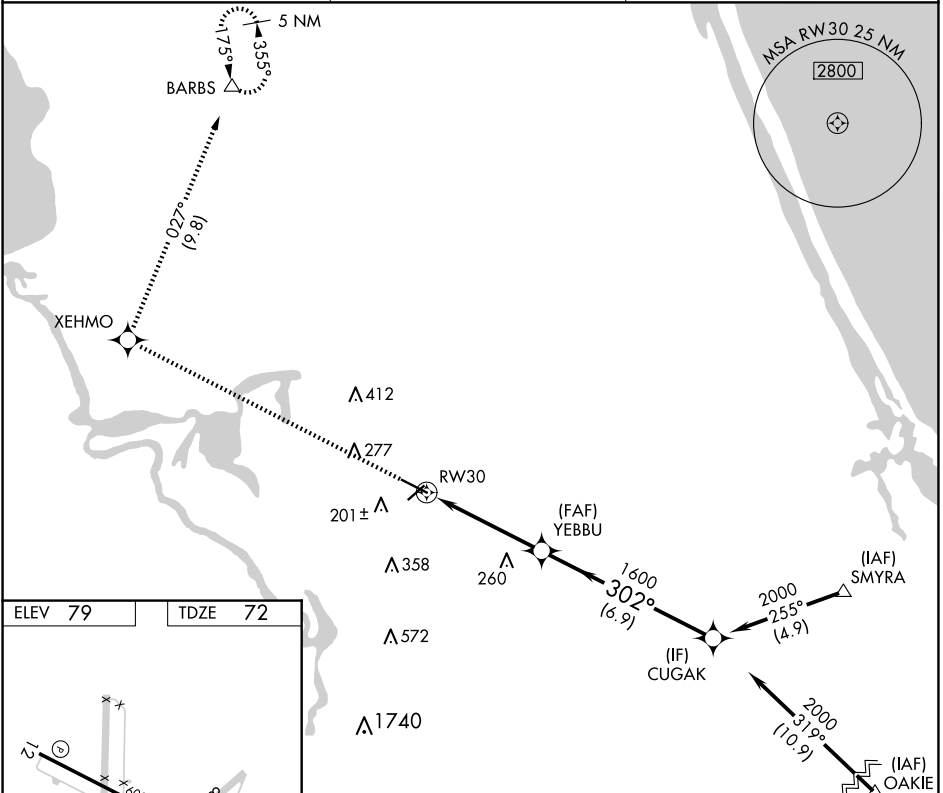
DELAND MUNI-SIDNEY H TAYLOR FLD (DED)

RNP APCH.

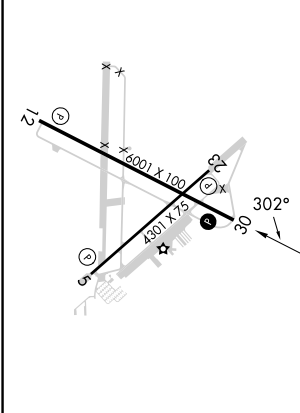
⚠ Rwy 30 helicopter visibility reduction below 3/4 SM NA. VDP NA when using Daytona Beach Intl altimeter setting. When local altimeter setting not received, use Daytona Beach Intl altimeter setting and increase all MDAs 40 feet.

MISSED APPROACH: Climb to 3000 direct XEHMO and right turn on track 027° direct BARBS and hold.

AWOS-3 119.575	DAYTONA APP CON 125.35 322.3	UNICOM 123.075 (CTAF) 0
--------------------------	----------------------------------------	-----------------------------------

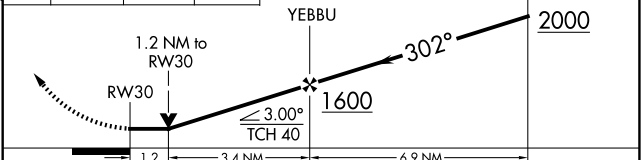


ELEV 79	TDZE 72
---------	---------



HIRL Rwy 12-30 **Ⓛ**
 MIRL Rwy 5-23 **Ⓛ**
 REIL Rwy 12 and 30 **Ⓛ**

3000	XEHMO	BARBS	VGSI and descent angles not coincident (VGSI Angle 3.00°/TCH 54).
↑	✧	△	
	tr 027°		



CATEGORY	A	B	C	D
LNAV MDA	500-1	428 (500-1)	500-1¼	428 (500-1¼)

SE-3, 11 JUN 2026 to 09 JUL 2026

SE-3, 11 JUN 2026 to 09 JUL 2026