

TACAN LDK Chan 125 (117.8)	APP CRS 241°	Rwy Ldg 6498 TDZE 164 Apt Elev 170
--	------------------------	---

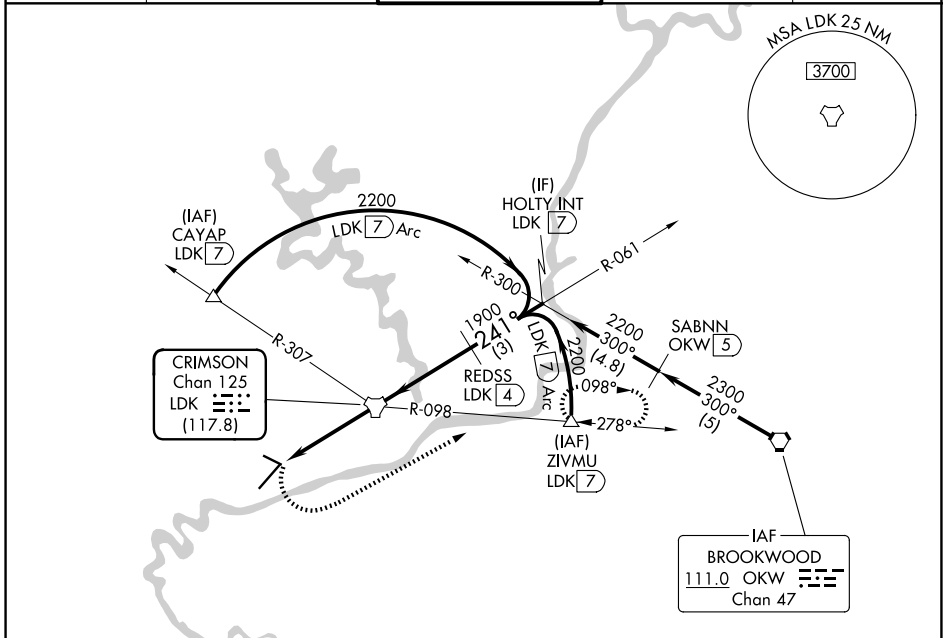
TACAN RWY 22

TUSCALOOSA NTL (TCL)

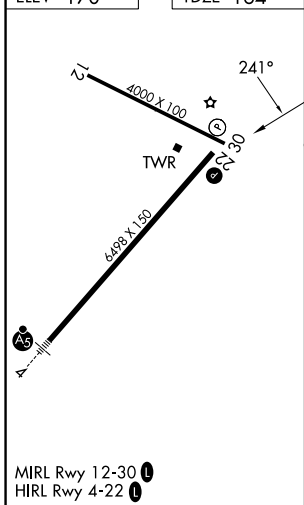
▼ Circling Rwy 12, 30 NA at night.
▲ Rwy 22 helicopter visibility reduction below 3/4 SM NA.

MISSED APPROACH: Climbing left turn to 2300 on heading 060° and LDK TACAN R-098 to ZIVMU/LDK 7 DME and hold.

ASOS 132.825	BIRMINGHAM APP CON 120.15 269.25	TUSCALOOSA TOWER ★ 126.3 (CTAF) 0 256.7	GND CON 121.8 257.95	UNICOM 122.95
------------------------	--	--	--------------------------------	-------------------------



ELEV 170	TDZE 164
----------	----------



2300	LDK R-098	ZIVMU	LDK TACAN	REDSS LDK 4	HOLTY_INT LDK 7
hdg 060°		△			
	LDK 4	LDK 2.2	LDK 2.2	LDK 4	LDK 7
	1.8 NM	2.2 NM	4 NM	3 NM	
CATEGORY	A	B	C	D	
S-22	800-1	636 (700-1)	800-1 3/4	636 (700-1 3/4)	
CIRCLING	800-1	630 (700-1)	960-2 1/4	960-2 1/2	
			790 (800-2 1/4)	790 (800-2 1/2)	

SE-4, 11 JUN 2026 to 09 JUL 2026

SE-4, 11 JUN 2026 to 09 JUL 2026