

# BESSA TWO DEPARTURE (RNAV) (BESSA2.BESSA)

TRAVIS AFB (KSUU)  
FAIRFIELD, CALIFORNIA

Rwy	Knots	60	120	180	240	300	360
*3R (C)	V/V(fpm)	201	402	603	804	1005	1206
† 3R (C)	V/V(fpm)	295	590	885	1180	1475	1770
† 3L (C)	V/V(fpm)	299	598	897	1196	1495	1794
*21L/RC	V/V(fpm)	220	440	660	880	1100	1320
†21R (C)	V/V(fpm)	277	554	831	1108	1385	1662
† 21L (C)	V/V(fpm)	280	560	840	1120	1400	1680

† ATC Climb Rate

\* Minimum

(C) to 500

(C) to BESSA to 8000

(C) to 4000

[USAF]

### DEPARTURE ROUTE DESCRIPTION

TAKEOFF RWY 3L/R: Climb on heading 035° to 1500, then left turn direct to cross BESSA at or above 8000. Thence...

TAKEOFF RWY 21L/R: Climb on heading 215° to 1500, then right turn direct to cross BESSA at or above 8000. Thence...

...via assigned transition. Maintain ATC assigned altitude.

HANAI TRANSITION (BESSA2.HANAI)

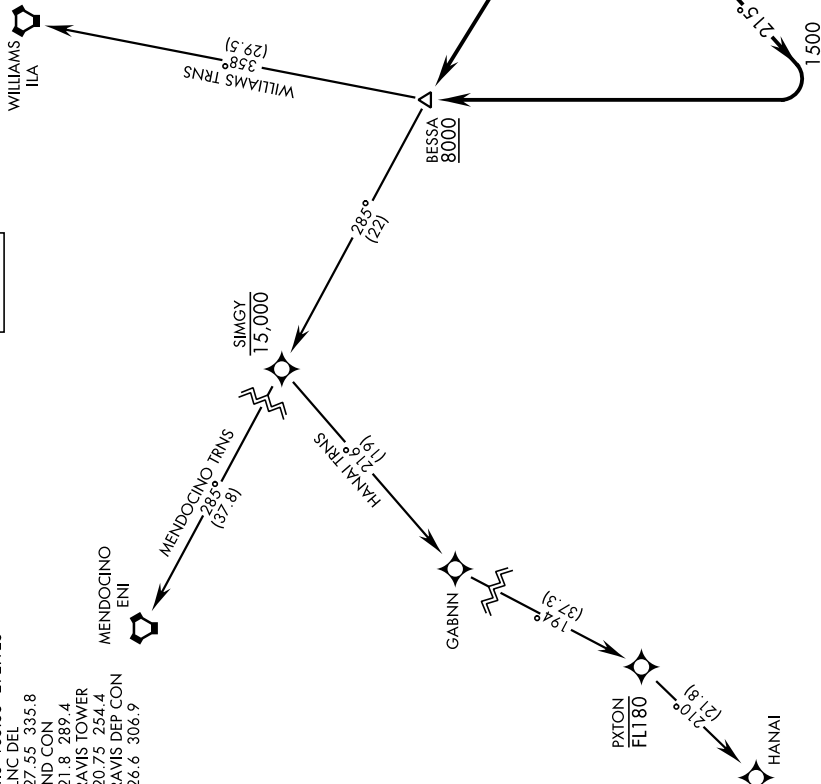
MENDOCINO TRANSITION (BESSA2.ENI)

WILLIAMS TRANSITION (BESSA2.ILA)

SW-2, 11 JUN 2026 to 09 JUL 2026

RNAV1- GPS

ATIS 135.55 292.125  
CINC DEL 127.55 335.8  
GNUP CON 121.8 289.4  
TRAVIS TOWER 120.75 254.4  
TRAVIS DEP CON 126.6 306.9



# BESSA TWO DEPARTURE (RNAV) (BESSA2.BESSA)

Orig 11JUL24

FAIRFIELD, CALIFORNIA  
TRAVIS AFB (KSUU)

SW-2, 11 JUN 2026 to 09 JUL 2026