

FAIRFIELD, CALIFORNIA

ILS or LOC or RNAV (GPS) RWY 21L

SBAS Chan 62106 W21A	APCH CRS 215°	Rwy Idg 10,995 TDZE 58 Arprt Elev 63
--	-------------------------	---

[USAF]

TRAVIS AFB (KSUU)

RNP APCH. RNAV1 - GPS or RADAR required for ILS, LOC.

RADAR required for CAT E aircraft for full procedure off of SEATO.

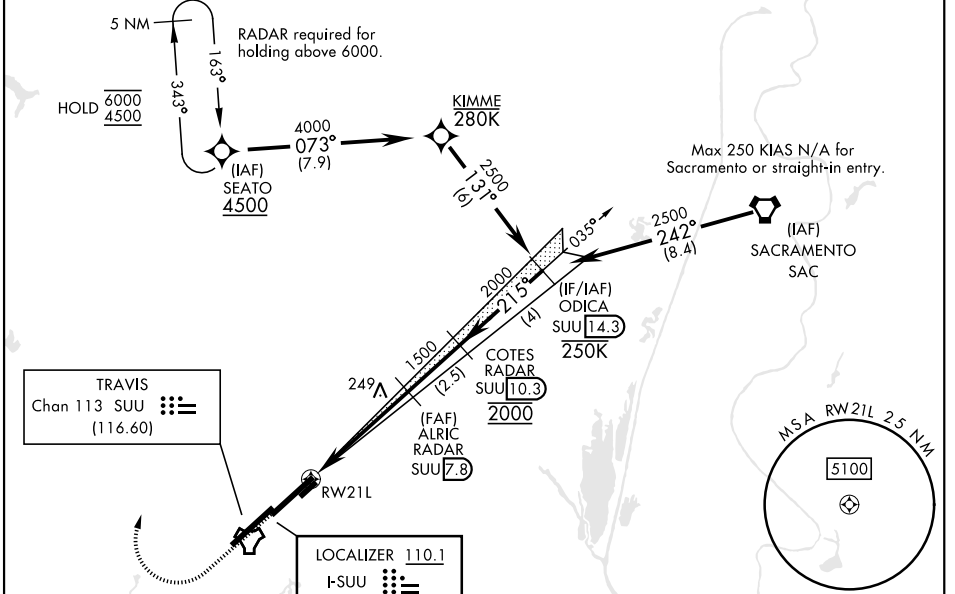
- ▲ * When ALS inop, increase RVR to 40, vis to 3/4 miles.
- ** When ALS inop, increase CAT AB RVR to 55, vis to 1 mile; CAT CDE vis to 1 1/4 miles.
- ***Circling not authorized NW of Rwy 3L-21R.



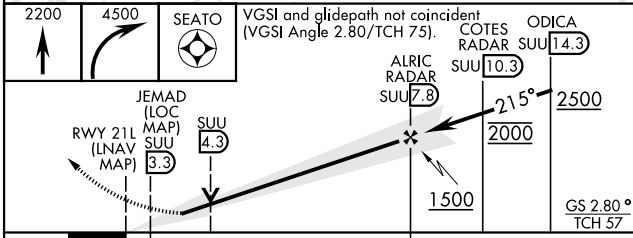
MISSED APPROACH: Climb to 2200 then climbing right turn to 4500 direct SEATO and hold, continue climb in hold to 4500.

ATIS 135.55 292.125	APP CON 119.9 322.325 (S) 126.6 281.45 (N)	TOWER 120.75 254.4	GND CON 121.8 289.4
-------------------------------	--	------------------------------	-------------------------------

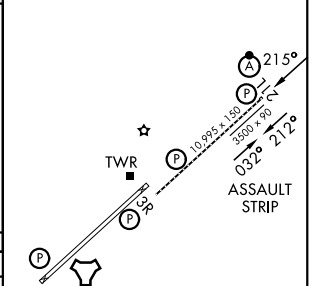
† When TDZL/RCLS inop, increase RVR to 24, RVR 18 authorized use of FD or AP or HUD to DA.



EMERG SAFE ALT 100 NM 13,000



ELEV	63	TDZE	58
------	----	------	----



CATEGORY	A	B	C	D	E
S-ILS 21L**		258/18	200	(200-1/2)	
LPV DA**		258/18	200	(200-1/2)	
S-LOC 21L**	500/24	442 (500-1/2)	500/45	442	(500-3/4)
LNVA MDA**	500/24	442 (500-1/2)	500/45	442	(500-3/4)
CIRCLING***	560-1	660-1	1100-3	1200-3	1137 (1200-3)
	497 (500-1)	597 (600-1)	1037(1100-3)		

HIRL Rwy 3R-21L TDZL/RCLS Rwy 3R, 21L					
FAF to MAP 4.5 NM					
Knots	60	90	120	150	180
Min:Sec	4:30	3:00	2:15	1:48	1:30

FAIRFIELD, CALIFORNIA
Orig 19MAY22

38°16'N-121°55'W

TRAVIS AFB (KSUU)

ILS or LOC or RNAV (GPS) RWY 21L

SW-2, 11 JUN 2026 to 09 JUL 2026

SW-2, 11 JUN 2026 to 09 JUL 2026