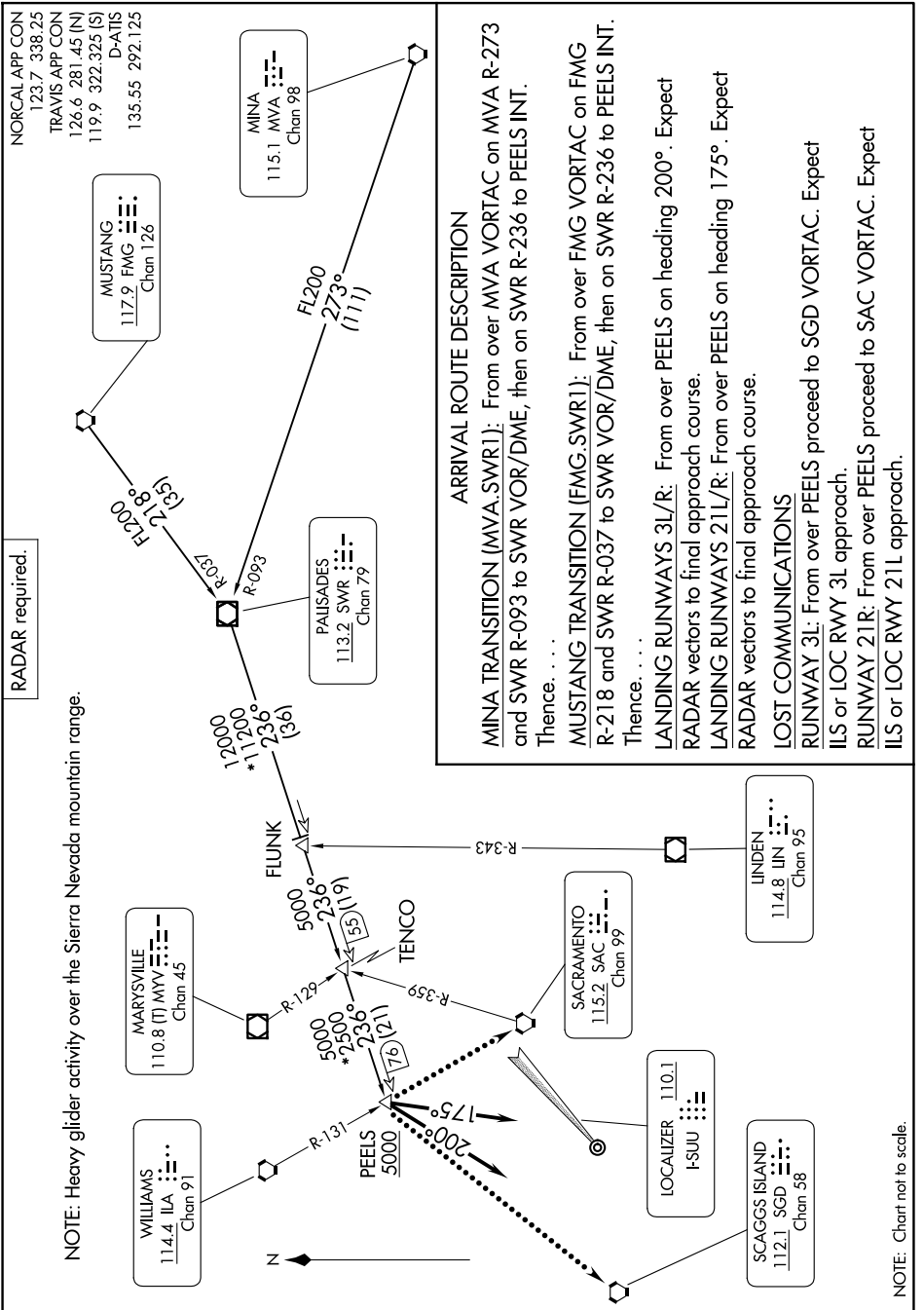


# PALISADES ONE ARRIVAL

9200 1100 60 of 9200 2000 11 7-MS



RADAR required.

NOTE: Heavy glider activity over the Sierra Nevada mountain range.

### ARRIVAL ROUTE DESCRIPTION

**MINA TRANSITION (MVA.SWR1):** From over MVA VORTAC on MVA R-273 and SWR R-093 to SWR VOR/DME, then on SWR R-236 to PEELS INT. Thence . . . .

**MUSTANG TRANSITION (FMG.SWR1):** From over FMG VORTAC on FMG R-218 and SWR R-037 to SWR VOR/DME, then on SWR R-236 to PEELS INT. Thence . . . .

**LANDING RUNWAYS 3L/R:** From over PEELS on heading 200°. Expect RADAR vectors to final approach course.

**LANDING RUNWAYS 21L/R:** From over PEELS on heading 175°. Expect RADAR vectors to final approach course.

### LOST COMMUNICATIONS

**RUNWAY 3L:** From over PEELS proceed to SGD VORTAC. Expect ILS or LOC RWY 3L approach.

**RUNWAY 21R:** From over PEELS proceed to SAC VORTAC. Expect ILS or LOC RWY 21L approach.

NOTE: Chart not to scale.

SW-2, 11 JUN 2026 to 09 JUL 2026

# PALISADES ONE ARRIVAL