

FAIRFIELD, CALIFORNIA

# RNAV (GPS) RWY 03R

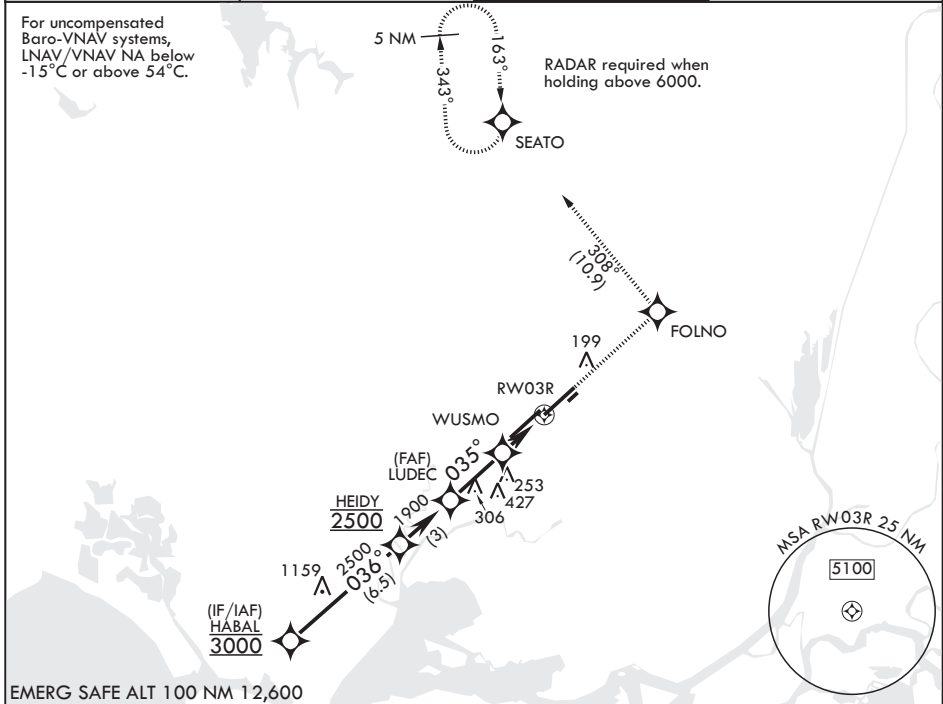
WAAS CH <b>98057</b> W03B	APCH CRS <b>035°</b>	Rwy ldg TDZE <b>59</b> Arprt Elev <b>63</b>	<b>10,995</b>
---------------------------------	-------------------------	---	---------------

(USAF)

TRAVIS AFB (KSUU)

RNP APCH  
 ▼ \* Circling NA NW of RWY 3L-21R.  
 MISSED APPROACH: Climb to 4500 direct FOLNO, track 308° to SEATO and hold, continue climb-in-hold to 4500.

ATIS <b>135.55 292.125</b>	APP CON <b>119.9 322.325 (S)</b> <b>126.6 281.45 (N)</b>	TOWER <b>120.75 254.4</b>	GND CON <b>121.8 289.4</b>
-------------------------------	--	------------------------------	-------------------------------



EMERG SAFE ALT 100 NM 12,600

HABAL 3000 HEIDY 2500 LUDEC 1900 WUSMO 900 RWY 03R 253 427	4500 FOLNO tr 308° SEATO ELEV 63 TDZE 59	<p>VGSI and RNAV glidepath not coincident (VGSI angle 2.50°/TCH 69)</p> <p>1.3 NM to RWY 03R</p> <p>3.1 NM   2.5 NM</p> <p>TWR 209 ASSAULT STRIP 10,995 x 150 2500 x 120 302 x 120</p>			
CATEGORY	A	B	C	D	E
LPV DA	259/40		200	(200-¾)	
LNAV/VNAV DA	340/45 281 (300-¾)	351/45 292 (300-¾)	359/45 300 (300-¾)	370/45	311 (400-¾)
LNAV MDA	460/55	401 (400-1)	460/60	401	(400-1½)
CIRCLING*	560-1 497 (500-1)	660-1 597 (600-1)	1100-3 1037 (1100-3)	1200-3 1137 (1200-3)	
HIRL Rwy 3L-21R and 3R-21L TDZL/CL Rwy 3R and 21L					

FAIRFIELD, CALIFORNIA

38°16'N - 121°55'W

TRAVIS AFB (KSUU)

Orig 27JAN22

# RNAV (GPS) RWY 03R

SW-2, 11 JUN 2026 to 09 JUL 2026

SW-2, 11 JUN 2026 to 09 JUL 2026