

(SUTHU.SUTHU2) 22139

# SUTHU TWO ARRIVAL (RNAV)

AL-488 (FAA)

TRAVIS AFB (KSUU)  
FAIRFIELD, CALIFORNIA

RNAV 1 - DME/DME/IRU or GPS.  
RADAR required.

TRAVIS APP CON
126.6 281.45 (N)
119.9 322.325 (S)
TRAVIS TOWER
120.75 254.4
GND CON
121.8 289.4
D-ATIS
135.55 292.125

TOCOS  
FL370  
FL330

OKNIE  
FL300

WALBO  
FL300

SUTHU  
15000  
13000

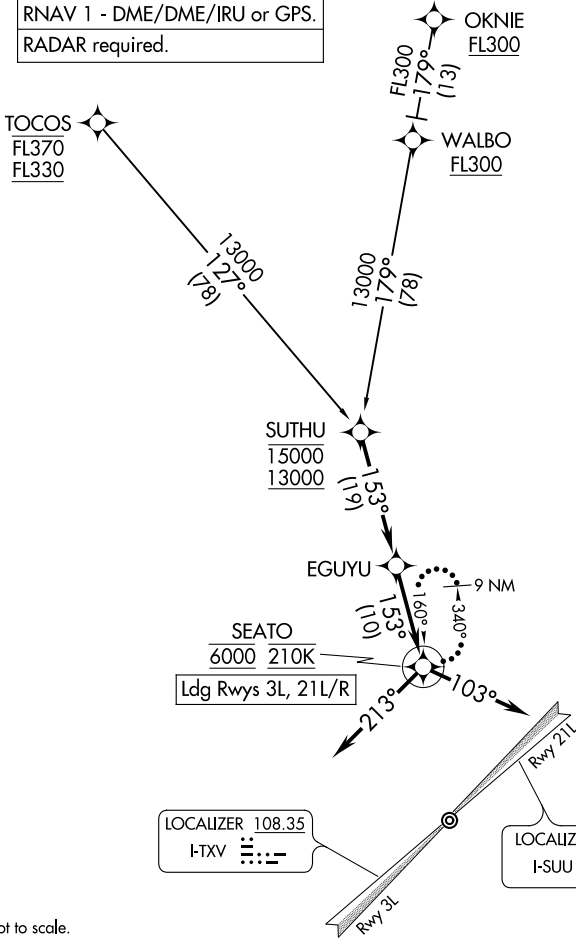
EGUYU

SEATO  
6000 210K

Ldg Rwys 3L, 21L/R

LOCALIZER 108.35  
I-TXV

LOCALIZER 110.1  
I-SUU



NOTE: Chart not to scale.

## ARRIVAL ROUTE DESCRIPTION

OKNIE TRANSITION (OKNIE.SUTHU2)

TOCOS TRANSITION (TOCOS.SUTHU2)

From SUTHU on track 153° to EGUYU.

LANDING RUNWAY 3L: From EGUYU on track 153° to cross SEATO at 6000 and at 210K, then on heading 213°. Expect RADAR vectors to final approach course.

LANDING RUNWAYS 21L/R: From EGUYU on track 153° to cross SEATO at 6000 and at 210K, then on heading 103°. Expect RADAR vectors to final approach course.

LOST COMMUNICATIONS: From SEATO, execute ILS or LOC RWY 21L or TACAN RWY 3L approach. If unable, hold at SEATO as depicted, maintain 6000.

# SUTHU TWO ARRIVAL (RNAV)

(SUTHU.SUTHU2) 19MAY22

FAIRFIELD, CALIFORNIA  
TRAVIS AFB (KSUU)

SW-2, 11 JUN 2026 to 09 JUL 2026

SW-2, 11 JUN 2026 to 09 JUL 2026