

(ALTNN2.ALTNN) 24081

AL-494 (FAA)

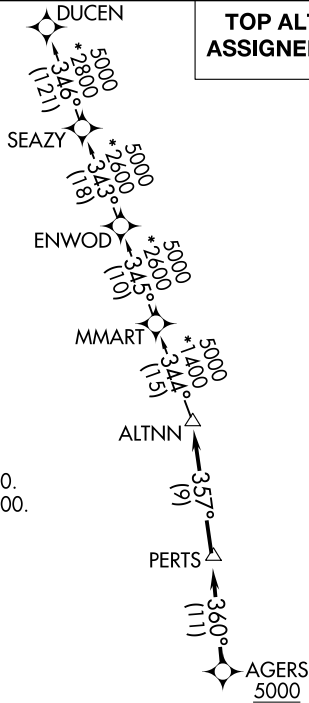
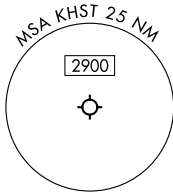
# ALTNN TWO DEPARTURE (RNAV)

HOMESTEAD ARB (KHST)  
HOMESTEAD, FLORIDA

MIAMI DEP CON  
125.5 354.1  
ATIS \*  
132.275 269.9  
CLNC DEL  
121.75 275.8  
GND CON  
121.75 275.8  
HOMESTEAD TOWER  
133.45 279.55

RNAV 1 - DME/DME/IRU or GPS.  
RADAR required.

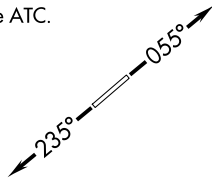
**TOP ALTITUDE:  
ASSIGNED BY ATC**



### TAKEOFF MINIMUMS

Rwy 6: Standard with minimum climb of 500'/NM to 1800.  
Rwy 24: Standard with minimum climb of 500'/NM to 2200.

NOTE: Jet aircraft only.  
NOTE: Accelerate to 250K until leaving 10000, if unable, advise ATC.



NOTE: Chart not to scale.

### DEPARTURE ROUTE DESCRIPTION

TAKEOFF RUNWAY 6: Climb on heading 055° or as assigned by ATC for RADAR vectors to cross AGERS at or above 5000, thence. . . .

TAKEOFF RUNWAY 24: Climb on heading 235° or as assigned by ATC for RADAR vectors to cross AGERS at or above 5000, thence. . . .

. . . . on track 360° to PERTS, then on track 357° to ALTNN, then on assigned transition, maintain ATC assigned altitude, expect filed altitude within 10 minutes after departure.

DUCEN TRANSITION (ALTNN2.DUCEN)

ALTNN TWO DEPARTURE (RNAV)  
(ALTNN2.ALTNN) 21MAR24

HOMESTEAD, FLORIDA  
HOMESTEAD ARB (KHST)

SE-3, 11 JUN 2026 to 09 JUL 2026

SE-3, 11 JUN 2026 to 09 JUL 2026