

(FOLZZ3.FOLZZ) 24081  
**FOLZZ THREE DEPARTURE (RNAV)**

AL-494 (FAA)

HOMESTEAD ARB (KHST)  
 HOMESTEAD, FLORIDA

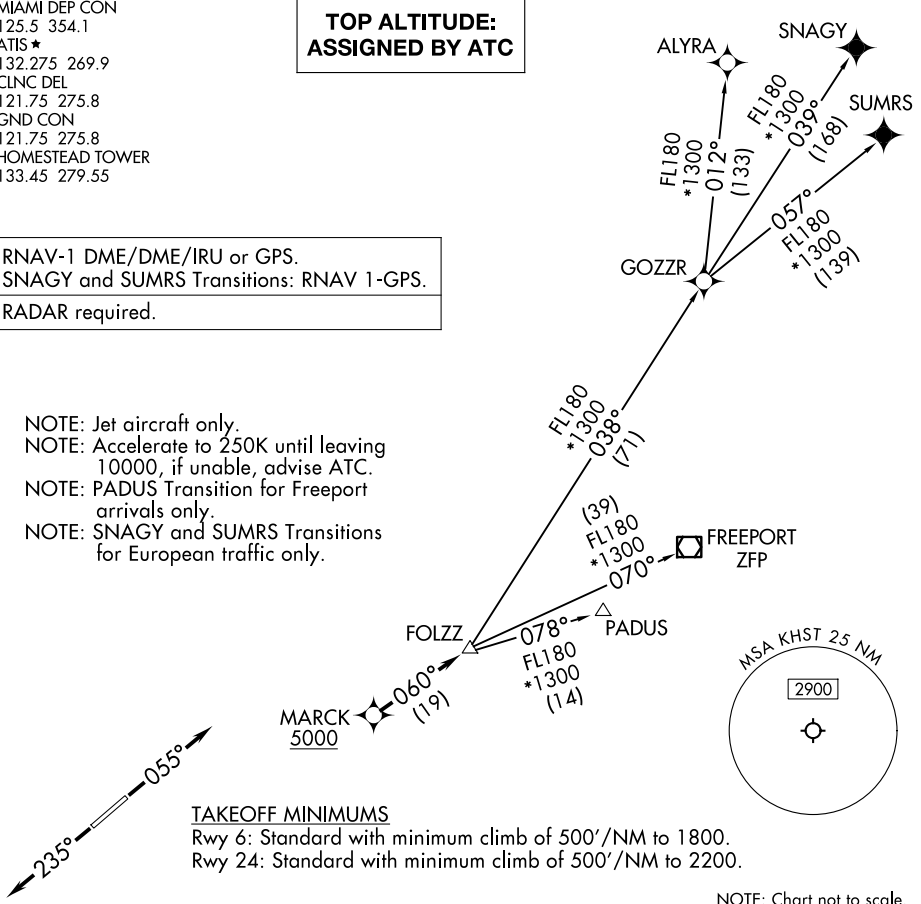
MIAMI DEP CON  
 125.5 354.1  
 ATIS ★  
 132.275 269.9  
 CLNC DEL  
 121.75 275.8  
 GND CON  
 121.75 275.8  
 HOMESTEAD TOWER  
 133.45 279.55

**TOP ALTITUDE:  
 ASSIGNED BY ATC**

RNAV-1 DME/DME/IRU or GPS.  
 SNAGY and SUMRS Transitions: RNAV 1-GPS.

RADAR required.

NOTE: Jet aircraft only.  
 NOTE: Accelerate to 250K until leaving  
 10000, if unable, advise ATC.  
 NOTE: PADUS Transition for Freeport  
 arrivals only.  
 NOTE: SNAGY and SUMRS Transitions for  
 European traffic only.



**TAKEOFF MINIMUMS**

Rwy 6: Standard with minimum climb of 500'/NM to 1800.  
 Rwy 24: Standard with minimum climb of 500'/NM to 2200.

NOTE: Chart not to scale.

**DEPARTURE ROUTE DESCRIPTION**

**TAKEOFF RUNWAY 6:** Climb on heading 055° or as assigned by ATC for RADAR vectors to cross MARCK at or above 5000, thence. . .  
**TAKEOFF RUNWAY 24:** Climb on heading 235° or as assigned by ATC for RADAR vectors to cross MARCK at or above 5000, thence. . .  
 . . .on track 060° to FOLZZ, then on assigned transition. Maintain ATC assigned altitude, expect filed altitude within 10 minutes after departure.

- ALYRA TRANSITION (FOLZZ3.ALYRA)
- FREEPORT TRANSITION (FOLZZ3.ZFP)
- GOZZR TRANSITION (FOLZZ3.GOZZR)
- PADUS TRANSITION (FOLZZ3.PADUS)
- SNAGY TRANSITION (FOLZZ3.SNAGY)
- SUMRS TRANSITION (FOLZZ3.SUMRS)

**FOLZZ THREE DEPARTURE (RNAV)**  
 (FOLZZ3.FOLZZ) 21MAR24

HOMESTEAD, FLORIDA  
 HOMESTEAD ARB (KHST)

SE-3, 11 JUN 2026 to 09 JUL 2026

SE-3, 11 JUN 2026 to 09 JUL 2026