

HOMESTEAD, FLORIDA

HI-ILS or LOC Y RWY 6

LOC I-HST 109.9	APCH CRS 055°	Rwy ldg 11,201
		TDZE 5
		Arpt Elev 5

[USAF]

HOMESTEAD ARB (KHST)

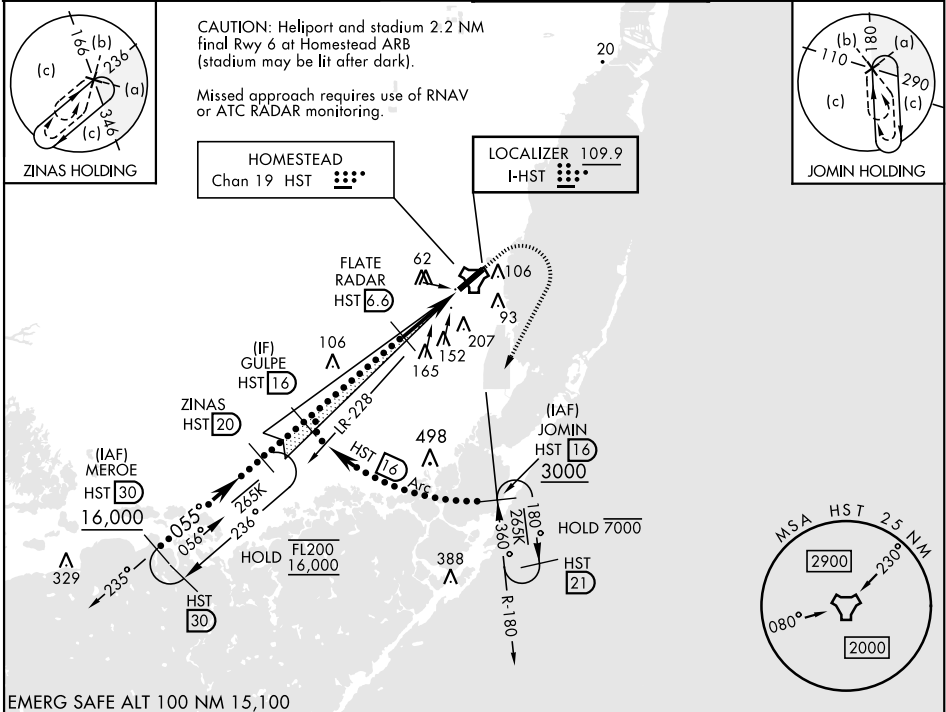
RADAR or DME required.



MISSED APPROACH: Climb to 800 then climbing right turn to 3000 intercept HST TACAN R-180 to JOMIN and hold.

- ▼ * When ALS inop, increase RVR to 40, vis to 3/4 mile.
- ** When ALS inop, increase RVR to 60, vis to 1 3/8 miles.
- *** Circling NA NW of Rwy 6-24.

ATIS * 132.275 269.9	APP CON 123.8 257.675	TOWER 133.45 279.55	GND CON 121.75 275.8
--------------------------------	---------------------------------	-------------------------------	--------------------------------



EMERG SAFE ALT 100 NM 15,100

	800	3000	JOMIN HST 16	ELEV 5	TDZE 5
		HST R-180		HIRL Rwy 6-24	
CATEGORY	C	D	E	FAF to MAP 5.0 NM	
S-ILS 6 *	205/24	200	(200-1/2)	Knots	120 140 160 180 200
S-LOC 6 **	460/45	455	(500-7/8)	Min:Sec	2:30 2:09 1:53 1:40 1:30
CIRCLING ***	520-1 1/2 514 (600-1 1/2)	580-2 574 (600-2)	780-2 3/4 774 (800-2 3/4)		

HOMESTEAD, FLORIDA

25°29'N-80°23'W

HOMESTEAD ARB (KHST)

Amdt 2 30DEC21

HI-ILS or LOC Y RWY 6

SE-3, 11 JUN 2026 to 09 JUL 2026

SE-3, 11 JUN 2026 to 09 JUL 2026