

HOMESTEAD, FLORIDA

# ILS or LOC Z RWY 6

LOC I-HST <b>109.9</b>	APCH CRS <b>055°</b>	Rwy ldg 11,201
		TDZE 5
		Arprt Elev 5

[USAF]

HOMESTEAD ARB (KHST)

RADAR or DME required.

▼ \* When ALS inop, increase RVR to 40, vis to ¾ mile.  
 \*\* When ALS inop, increase CAT AB RVR to 55, vis to 1 mile; CAT CDE RVR to 60, vis to 1 ½ miles.



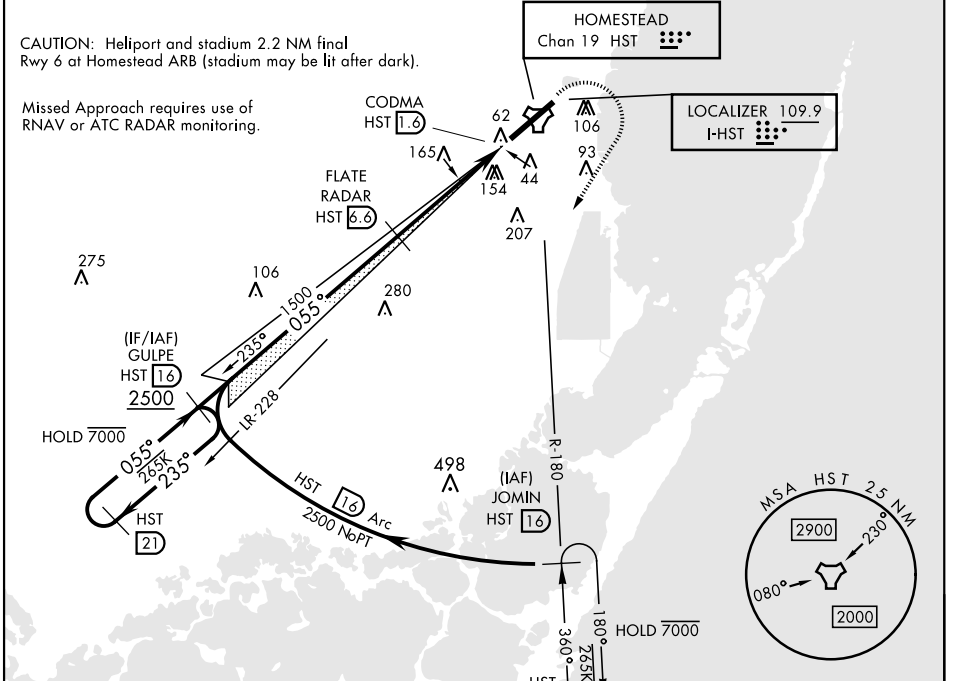
MISSED APPROACH: Climb to 800 then climbing right turn to 3000 intercept HST TACAN R-180 to JOMIN and hold.

ATIS ★ <b>132.275 269.9</b>	APP CON <b>123.8 257.675</b>	TOWER <b>133.45 279.55</b>	GND CON <b>121.75 275.8</b>
--------------------------------	---------------------------------	-------------------------------	--------------------------------

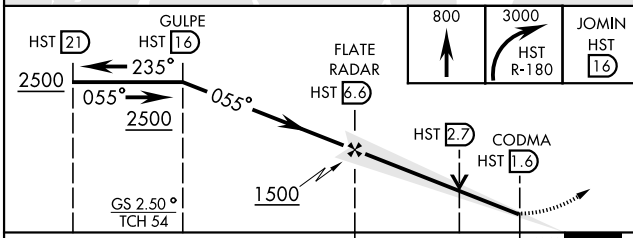
\*\*\* Circling NA NW of Rwy 6-24.

CAUTION: Helipod and stadium 2.2 NM final Rwy 6 at Homestead ARB (stadium may be lit after dark).

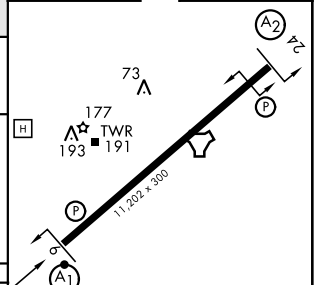
Missed Approach requires use of RNAV or ATC RADAR monitoring.



EMERG SAFE ALT 100 NM 15,100



ELEV 5	TDZE 5
--------	--------



CATEGORY	A	B	C	D	E
S-ILS 6 *	205/24		200	(200-½)	
S-LOC 6 **	460/24	455 (500-½)	460/45		455 (500-¾)
CIRCLING ***	460-1 454 (500-1)	500-1 494 (500-1)	520-1½ 514 (600-1½)	580-2 574 (600-2)	780-2¾ 774 (800-2¾)

HIRL Rwy 6-24					
FAF to MAP 5 NM					
Knots	60	90	120	150	180
Min:Sec	5:00	3:20	2:30	2:00	1:40

HOMESTEAD, FLORIDA

25°29'N-80°23'W

HOMESTEAD ARB (KHST)

Amtd 1 30DEC21

# ILS or LOC Z RWY 6

SE-3, 11 JUN 2026 to 09 JUL 2026

SE-3, 11 JUN 2026 to 09 JUL 2026