

(LIFRR2.LIFRR) 24109

AL-494 (FAA)

LIFRR TWO DEPARTURE (RNAV)

HOMESTEAD ARB (KHST)
HOMESTEAD, FLORIDA

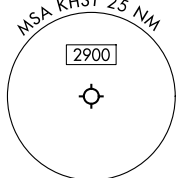
**TOP ALTITUDE:
ASSIGNED BY ATC**

RNAV 1 - DME/DME/IRU or GPS.

RADAR required for non-GPS
equipped aircraft.

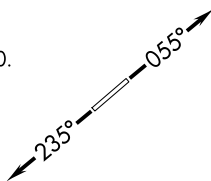
MIAMI DEP CON	125.5 354.1
ATIS*	
132.275 269.9	
CLNC DEL	
121.75 275.8	
GND CON	
121.75 275.8	
HOMESTEAD TOWER	
133.45 279.55	

NOTE: Accelerate to 250K until leaving 10000,
if unable, advise ATC.
NOTE: Jet aircraft only.
NOTE: For aircraft filed at or below 12000.



TAKEOFF MINIMUMS

Rwy 6: Standard with minimum climb of 500'/NM to 1800.
Rwy 24: Standard with minimum climb of 500'/NM to 2200.



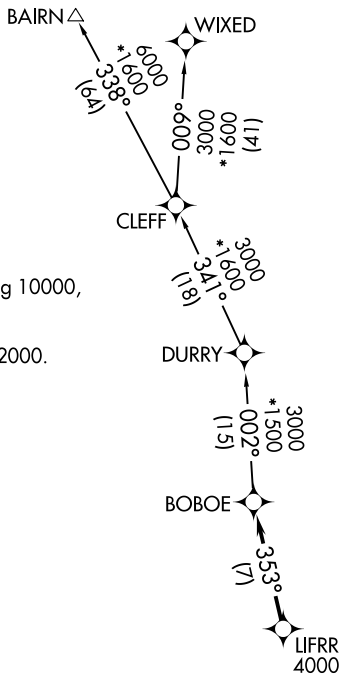
NOTE: Chart not to scale.

DEPARTURE ROUTE DESCRIPTION

TAKEOFF RUNWAY 6: Climb on heading 055° or as assigned by ATC, thence. . .
TAKEOFF RUNWAY 24: Climb on heading 235° or as assigned by ATC, thence. . .

. . . for RADAR vector to cross LIFRR at or above 4000, then on track 353° to BOBOE, then on assigned transition, maintain ATC assigned altitude, expect clearance to filed altitude within 10 minutes after departure.

BAIRN TRANSITION (LIFRR2.BAIRN)
WIXED TRANSITION (LIFRR2.WIXED)



SE-3, 11 JUN 2026 to 09 JUL 2026

SE-3, 11 JUN 2026 to 09 JUL 2026

LIFRR TWO DEPARTURE (RNAV)
(LIFRR2.LIFRR) 21MAR24

HOMESTEAD, FLORIDA
HOMESTEAD ARB (KHST)