

WAAS CH 90405 W22A	APP CRS 219°	Rwy Ldg TDZE Apt Elev	5000 2880 2885
--	------------------------	-----------------------------	---

RNAV (GPS) RWY 22

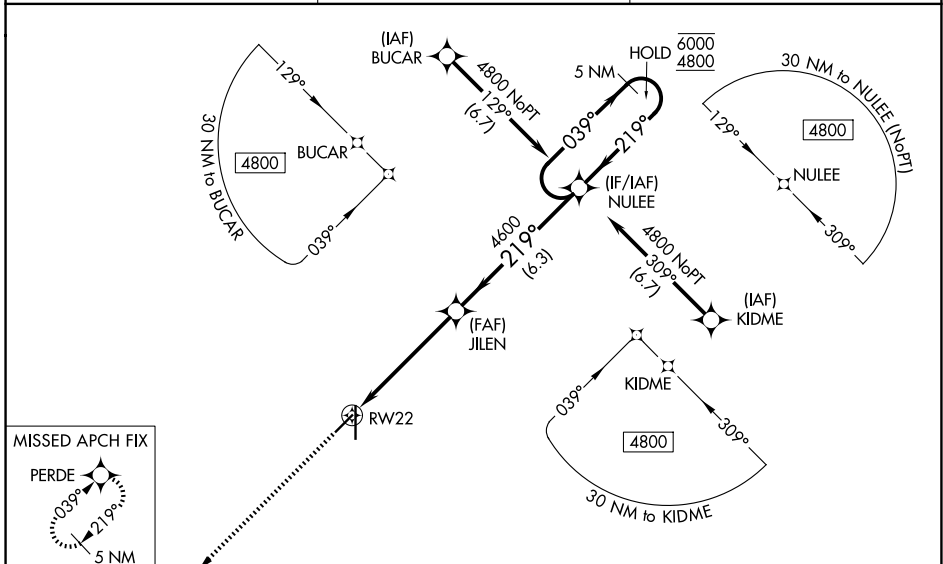
LIBERAL MID-AMERICA RGNL (L.B.L.)

RNP APCH - GPS.

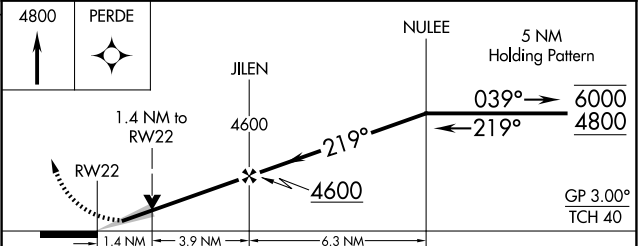
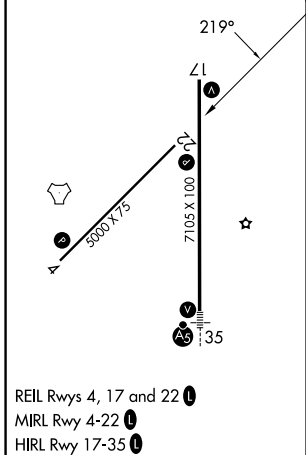
⚠ Circling NA east of Rwy 17-35. Baro-VNAV and VDP NA when using GUY altimeter setting. For uncompensated Baro-VNAV systems, LNAV/VNAV NA below -20°C or above 54°C. When local altimeter setting not received, use GUY altimeter setting and increase LPV DA to 3192 feet; Increase LNAV/VNAV DA to 3280 feet and all visibilities 1/2 SM. Increase all MDA's 120 feet and LNAV visibility Cat C/D 3/8 SM, and Circling visibility Cat C/D 1/4 SM.

MISSED APPROACH: Climb to 4800 direct PERDE and hold.

AWOS-3PT 118.375	KANSAS CITY CENTER 134.0 257.625	UNICOM 122.8 (CTAF) 0
----------------------------	--	---------------------------------



ELEV 2885	D	TDZE 2880
-----------	----------	-----------



CATEGORY	A	B	C	D
LPV DA		3080-1	200 (200-1)	
LNAV/VNAV DA		3168-1	288 (300-1)	
LNAV MDA	3360-1	480 (500-1)	3360-1 3/8	480 (500-1 3/8)
CIRCLING	3360-1 475 (500-1)	3360-1 1/8 475 (500-1 1/8)	3400-1 1/2 515 (600-1 1/2)	3640-2 1/2 755 (800-2 1/2)

LIBERAL, KANSAS
Amdt 1C 05SEP24

37°03'N-100°58'W

LIBERAL MID-AMERICA RGNL (L.B.L.)
RNAV (GPS) RWY 22

NC-2, 11 JUN 2026 to 09 JUL 2026

NC-2, 11 JUN 2026 to 09 JUL 2026