

WAAS CH 72905 W04A	APP CRS 039°	Rwy Ldg TDZE Apt Elev	5000 2885 2885
--	------------------------	-----------------------------	---

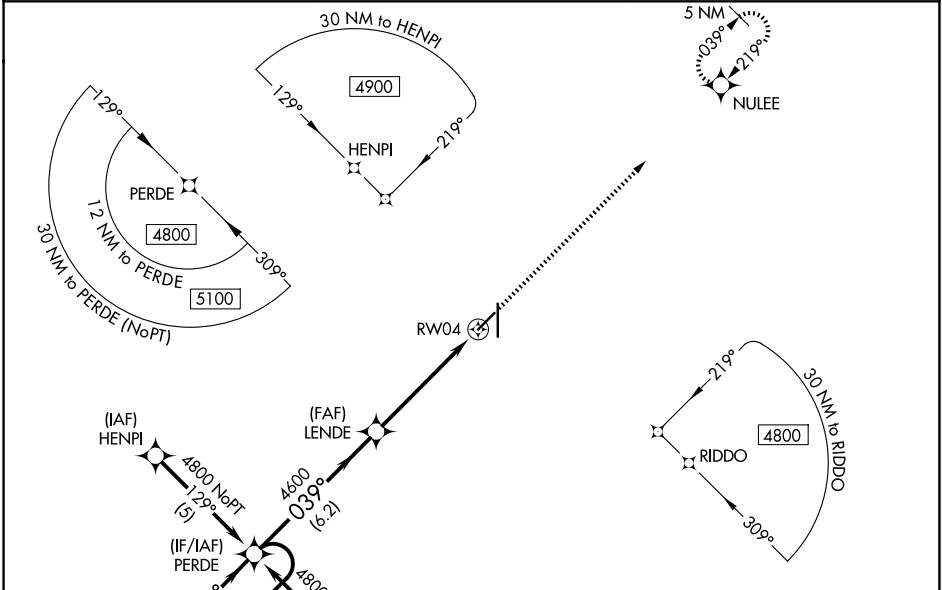
RNAV (GPS) RWY 4
LIBERAL MID-AMERICA RGNL (L.B.L.)

RNP APCH - GPS.

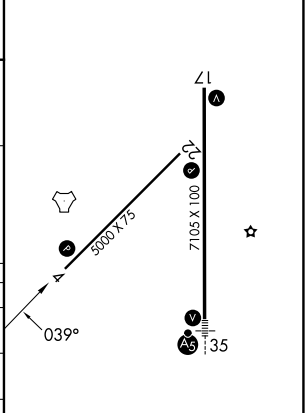
▼ For uncompensated Baro-VNAV systems, LNAV/VNAV NA below -20°C or above 54°C.
 ▲ Circling NA east of Rwy 17-35. When local altimeter setting not received, use GUY altimeter setting and increase LPV DA to 3248 feet; increase LNAV/VNAV DA to 3412 feet and all visibilities 3/8 SM. Increase all MDAs 120 feet and LNAV visibility Cat C/D 3/8 SM, and Circling visibility Cat C/D 1/4 SM. Baro-VNAV and VDP NA when using GUY altimeter setting.

MISSED APPROACH: Climb to 4800 direct NULEE and hold.

AWOS-3PT 118.375	KANSAS CITY CENTER 134.0 257.625	UNICOM 122.8 (CTAF)
----------------------------	--	-------------------------------



ELEV 2885	D TDZE 2885
-----------	--------------------



5 NM Holding Pattern	PERDE	LENDE	4800	NULEE
4800 ← 219°	→ 039°	→ 039°	↑	☀
GP 3.00°		4600	1.5 NM to RWY04	RWY04
TCH 39				
	6.2 NM	3.7 NM	1.5 NM	

CATEGORY	A	B	C	D
LPV DA	3136-1		251 (300-1)	
LNAV/VNAV DA	3300-1 3/8		415 (500-1 3/8)	
LNAV MDA	3400-1	515 (600-1)	3400-1 3/8	515 (600-1 3/8)
CIRCLING	3400-1	515 (600-1)	3400-1 1/2	3640-2 1/2
			515 (600-1 1/2)	755 (800-2 1/2)

REIL Rws 4, 17 and 22 **L**
 MRL Rwy 4-22 **L**
 HIRL Rwy 17-35 **L**

NC-2, 11 JUN 2026 to 09 JUL 2026

NC-2, 11 JUN 2026 to 09 JUL 2026