

WAAS CH <b>78332</b> <b>W26A</b>	APP CRS <b>261°</b>	Rwy Idg <b>6330</b> TDZE <b>587</b> Apt Elev <b>595</b>
--	------------------------	---

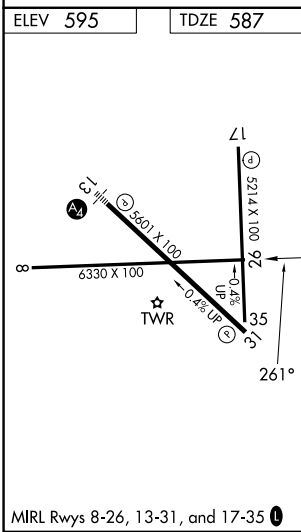
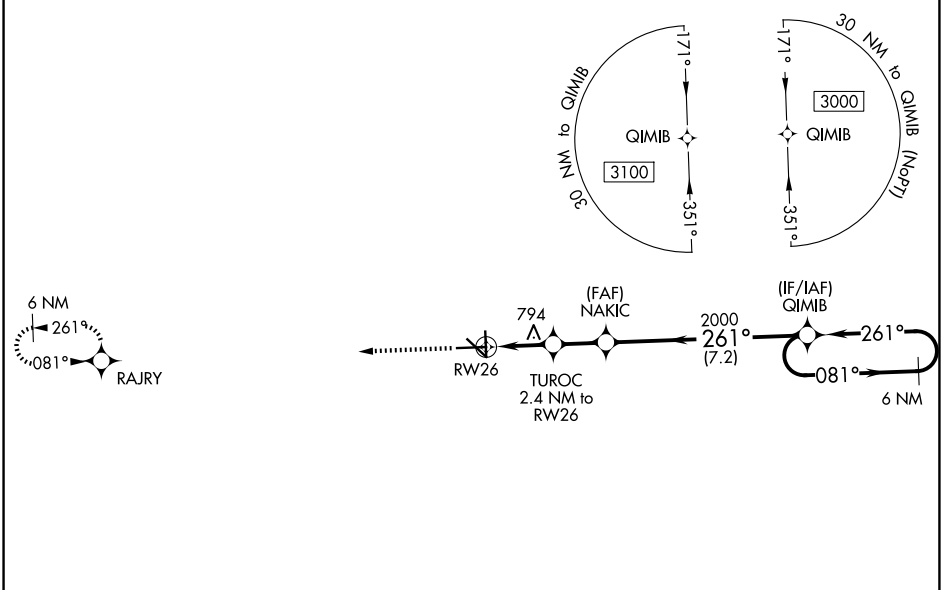
# RNAV (GPS) RWY 26

SAN MARCOS RGNL (HYI)

▼ Baro-VNAV NA when using New Braunfels altimeter setting. For uncompensated Baro-VNAV systems, LNAV/VNAV NA below -16°C (3°F) or above 54°C (130°F). When local altimeter setting not received, use New Braunfels altimeter setting and increase all DA 43 feet and all MDA 60 feet; increase LPV and LNAV/VNAV all Cats, and LNAV Cat C/D/E visibility 1/8 mile and Circling Cat C/D visibility 1/4 mile. Circling NA for Cat E SW of Rwy 13-31. DME/DME RNP-0.3 NA. VDP NA with New Braunfels altimeter setting. Helicopter visibility reduction below 3/4 SM NA.

MISSED APPROACH: Climb to 3000 direct RAJRY and hold.

ATIS <b>120.825</b>	AUSTIN APP CON <b>119.0 370.85</b>	SAN MARCOS TOWER ★ <b>126.825</b> (CTAF)	GND CON <b>120.125</b>
------------------------	---------------------------------------	---	---------------------------



CATEGORY	A	B	C	D	E
LPV DA		837-3/4	250 (300-3/4)		
LNAV/VNAV DA		866-7/8	279 (300-7/8)		
LNAV MDA	1060-1	473 (500-1)	1060-1 3/8	473 (500-1 3/8)	
CIRCLING	1080-1 485 (500-1)	1120-1 525 (600-1)	1240-1 3/4 645 (700-1 3/4)	1320-2 1/4 725 (800-2 1/4)	1340-2 3/4 745 (800-2 3/4)

SC-3, 11 JUN 2026 to 09 JUL 2026

SC-3, 11 JUN 2026 to 09 JUL 2026