

WAAS CH 90432 W31A	APP CRS 306°	Rwy Ldg TDZE Apt Elev 5601 583 595
--	------------------------	--

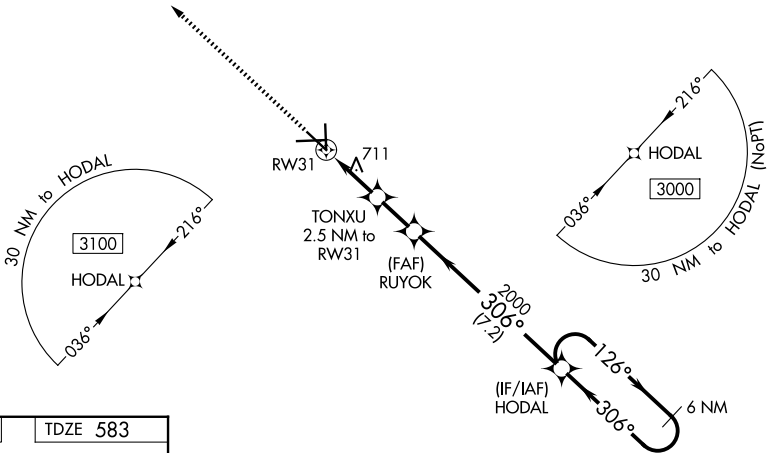
RNAV (GPS) RWY 31

SAN MARCOS RGNL (HYI)

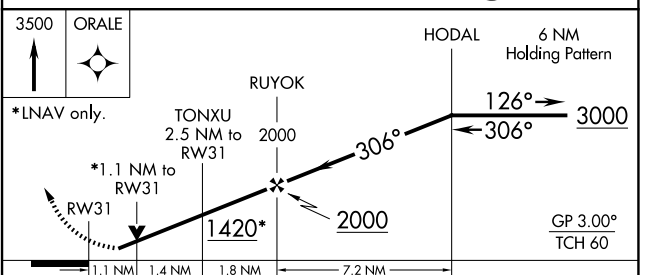
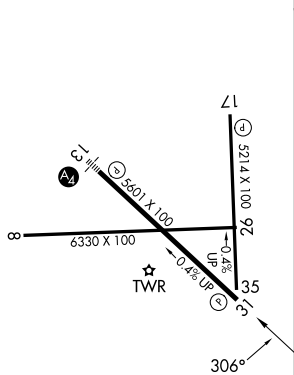
⚠ Baro-VNAV NA when using New Braunfels altimeter setting. For uncompensated Baro-VNAV systems, LNAV/VNAV NA below -16°C (3°F) or above 54°C (130°F). When local altimeter setting not received, use New Braunfels altimeter setting and increase all DA 43 feet and all MDA 60 feet; increase LPV all Cats and LNAV/VNAV all Cats visibility 1/8 mile and LNAV Cat C/D/E and Circling Cat C/D visibility 1/4. Circling NA for Cat E SW of Rwy 13-31. DME/DME RNP-0.3 NA. VDP NA with New Braunfels altimeter setting. Helicopter visibility reduction below 3/4 SM NA.

MISSED APPROACH:
Climb to 3500 direct ORALE and hold.

ATIS 120.825	AUSTIN APP CON 119.0 370.85	SAN MARCOS TOWER* 126.825 (CTAF) 📻	GND CON 120.125
------------------------	---------------------------------------	---	---------------------------



ELEV 595	TDZE 583
----------	----------



CATEGORY	A	B	C	D	E
LPV DA	860-7/8		277 (300-7/8)		
LNAV/VNAV DA	906-1		323 (400-1)		
LNAV MDA	980-1	397 (400-1)	980-1 1/8	397 (400-1 1/8)	
CIRCLING	1080-1	1120-1	1240-1 3/4	1320-2 1/4	1340-2 3/4
	485 (500-1)	525 (600-1)	645 (700-1 1/4)	725 (800-2 1/4)	745 (800-2 3/4)

SC-3, 11 JUN 2026 to 09 JUL 2026

SC-3, 11 JUN 2026 to 09 JUL 2026