

(DIVYD2.DIVYD) 24025

# DIVYD TWO DEPARTURE (RNAV)

AL-504 (FAA)

JACKSON HOLE (JAC)  
JACKSON, WYOMING

RNAV 1 - GPS.

RADAR required for non-GPS equipped aircraft.

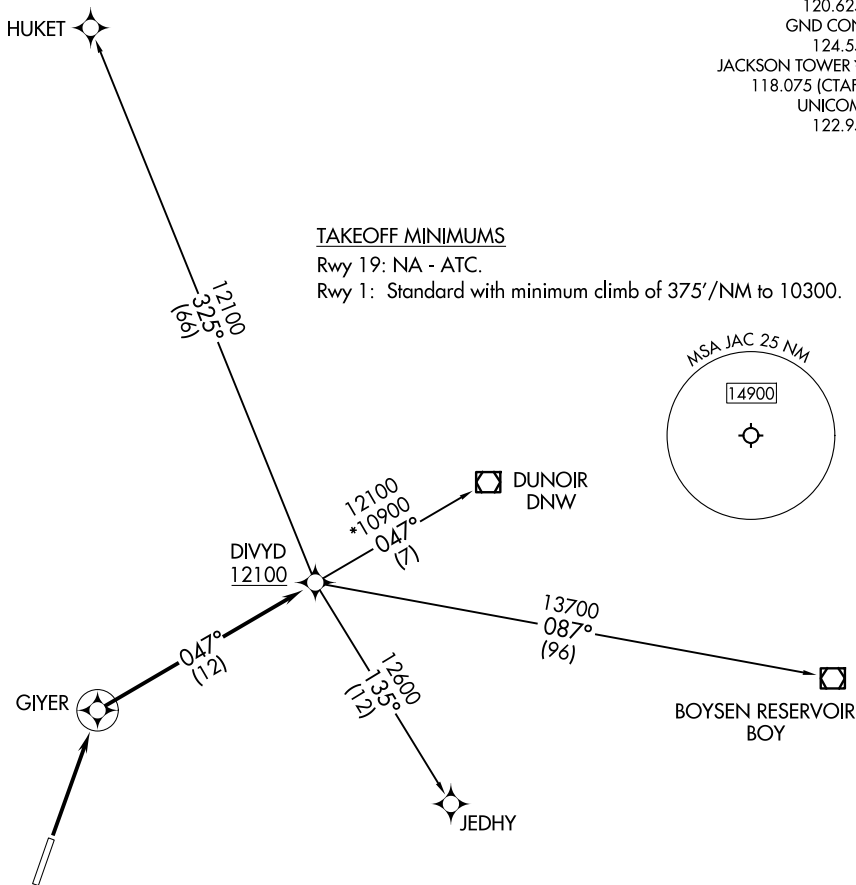
**TOP ALTITUDE:  
ASSIGNED BY ATC**

SALT LAKE CENTER  
133.25 285.6  
D-ATIS  
120.625  
GND CON  
124.55  
JACKSON TOWER \*  
118.075 (CTAF)  
UNICOM  
122.95

### TAKEOFF MINIMUMS

Rwy 19: NA - ATC.

Rwy 1: Standard with minimum climb of 375'/NM to 10300.



NOTE: Chart not to scale.

### DEPARTURE ROUTE DESCRIPTION

**TAKEOFF RUNWAY 1:** Climb direct GIYER, then on track 047° to cross DIVYD at or above 12100, thence. . . .

. . . . (transition). Maintain ATC assigned altitude, expect filed altitude 10 minutes after departure.

BOYSEN RESERVOIR TRANSITION (DIVYD2.BOY)

DUNOIR TRANSITION (DIVYD2.DNW)

HUKET TRANSITION (DIVYD2.HUKET)

JEDHY TRANSITION (DIVYD2.JEDHY)

# DIVYD TWO DEPARTURE (RNAV)

(DIVYD2.DIVYD) 25JAN24

JACKSON, WYOMING  
JACKSON HOLE (JAC)

NW-1, 11 JUN 2026 to 09 JUL 2026

NW-1, 11 JUN 2026 to 09 JUL 2026