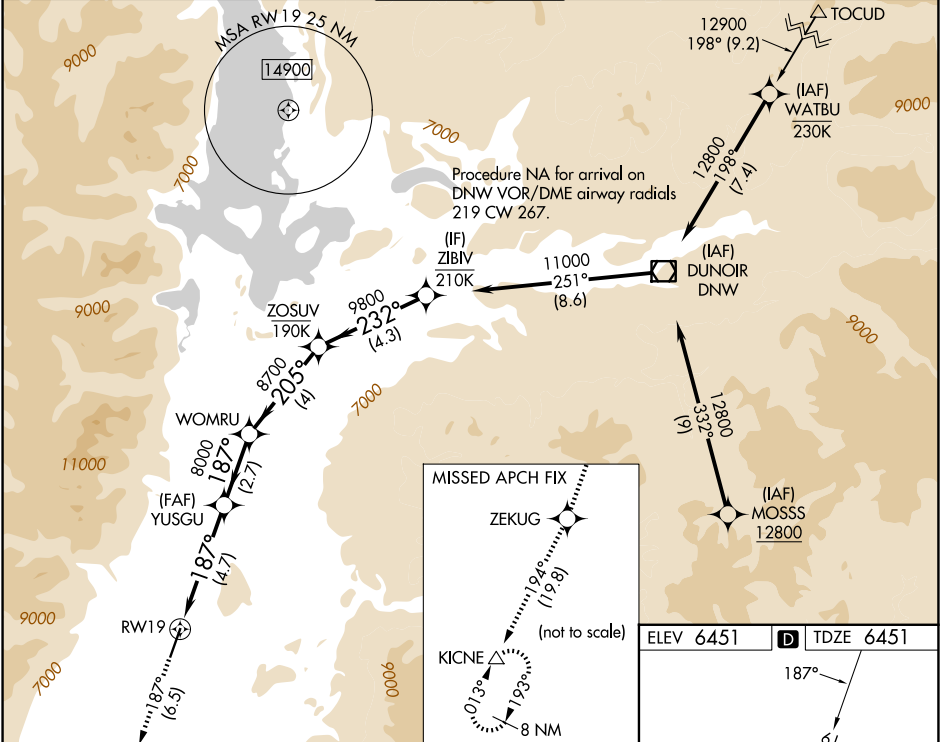


APP CRS	Rwy Ldg	<b>6300</b>
<b>187°</b>	TDZE	<b>6451</b>
	Apt Elev	<b>6451</b>

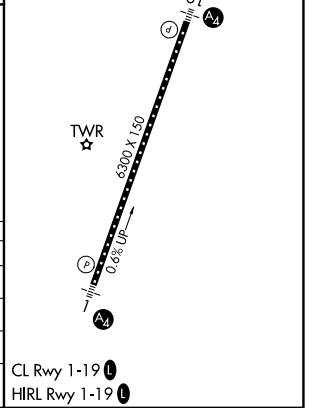
# RNAV (RNP) Y RWY 19

JACKSON HOLE (JAC)

RNP AR APCH-GPS.		MALS 	MISSED APPROACH: Climb to 14000 on track 187° to ZEKUG and on track 194° to KICNE and hold, continue climb-in-hold to 14000. *Missed approach requires minimum climb of 226 feet per NM to 11400. #Missed approach requires minimum climb of 210 feet per NM to 11600.		
For uncompensated Baro-VNAV systems, procedure NA below -27°C or above 54°C. For inop ALS, increase RNP 0.30 all Cats visibility to 1 3/4 SM.					
D-ATIS	SALT LAKE CENTER	JACKSON TOWER*	GND CON	UNICOM	
<b>120.625</b>	<b>133.25 285.6</b>	<b>118.075 (CTAF) 0</b>	<b>124.55</b>	<b>122.95</b>	



14000	ZEKUG	KICNE	WOMRU		ZOSUV	ZIBIV
↑ tr 187°		tr 194°				11000
			YUSGU			
			8000			
			187°		205°	232°
			8000		9800	
			4.7 NM		2.7 NM	4.3 NM
			RW19			
			GP 3.00°			TCH 50
CATEGORY	A	B	C	D		
RNP 0.11 DA*	6781/40		330 (400-3/4)			
RNP 0.30 DA#	6935/60		484 (500-1 1/4)			
RNP 0.30 DA	7038-1 3/8		587 (600-1 3/8)			



**AUTHORIZATION REQUIRED**

NW-1, 11 JUN 2026 to 09 JUL 2026

NW-1, 11 JUN 2026 to 09 JUL 2026