

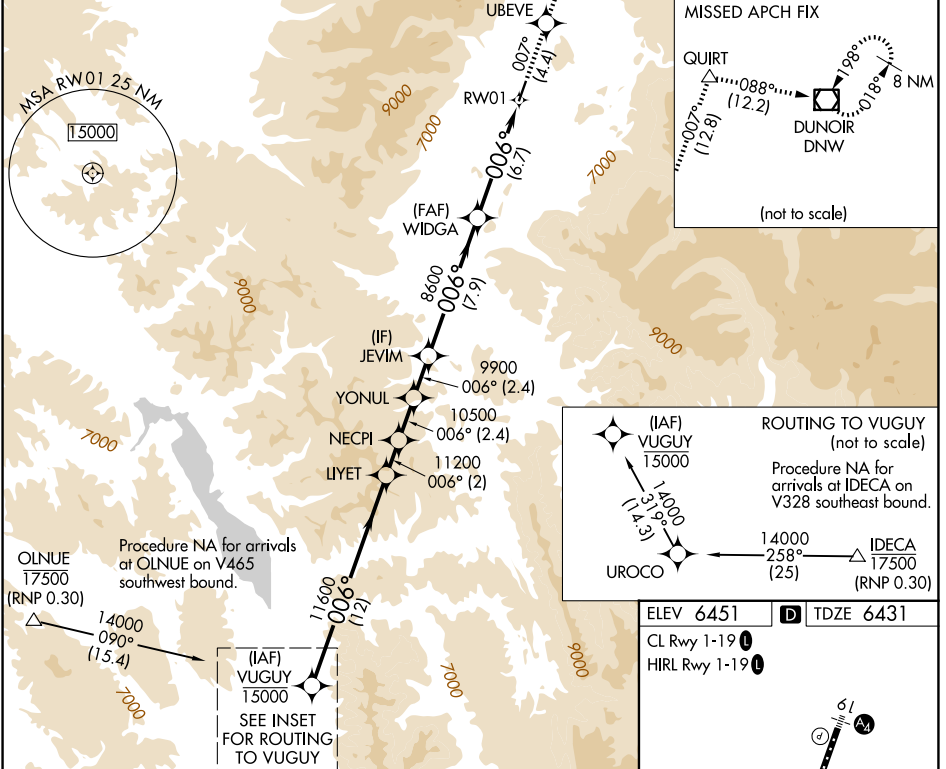
APP CRS	Rwy Ldg	6300
006°	TDZE	6431
	Apt Elev	6451

RNAV (RNP) Z RWY 1

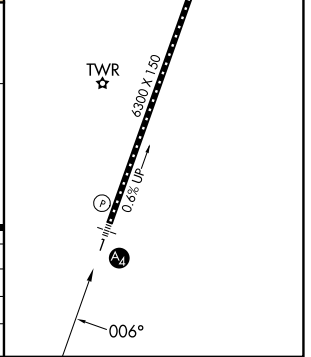
JACKSON HOLE (JAC)

RNP AR APCH For uncompensated Baro-VNAV systems, procedure NA below -27°C or above 54°C. Inop table does not apply to RNP 0.11* all Cats visibility. For inop ALS, increase RNP 0.30* all Cats visibility to ¾ SM. Missed approach requires RNP less than 1.0.		MALS 	MISSED APPROACH: Climb to 14000 on track 007° to UBEVE and track 007° to QUIRT and track 088° to DNW VOR/DME and hold, continue climb-in-hold to 14000. * Missed approach requires minimum climb of 330 feet per NM to 8200; if unable to meet climb gradient, see RNAV (RNP) Y RWY 1.
---	--	-----------------	--

D-ATIS 120.625	SALT LAKE CENTER 133.25 285.6	JACKSON TOWER* 118.075 (CTAF)	GND CON 124.55	UNICOM 122.95
--------------------------	---	--	--------------------------	-------------------------



VUGUY	LIYET	NECP1	YONUL	JEVIM	WIDGA	RW01	UBEVE	QUIRT	DNW
15000	11200	10500	9900	8600	8600	8600	14000	tr 007°	tr 088°
14000	11600	11200	10500	9900	8600	8600	14000	tr 007°	tr 088°
GP 3.00°									
TCH 50									
	12 NM	2 NM	2.4	2.4	7.9 NM	6.7 NM			
CATEGORY	A	B	C	D					
RNP 0.11 DA*		6690-¾	259 (300-¾)						
RNP 0.30 DA*		6743-¾	312 (300-¾)						



AUTHORIZATION REQUIRED

NW-1, 11 JUN 2026 to 09 JUL 2026

NW-1, 11 JUN 2026 to 09 JUL 2026