

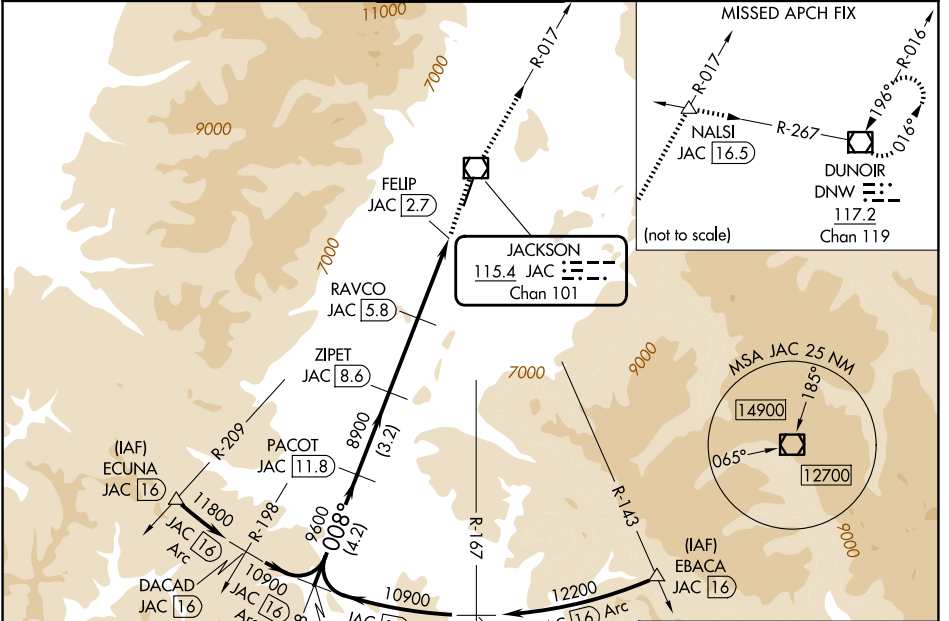
VOR/DME JAC	APP CRS	Rwy Ldg	6300
115.4	008°	TDZE	6431
Chan 101		Apt Elev	6451

VOR RWY 1

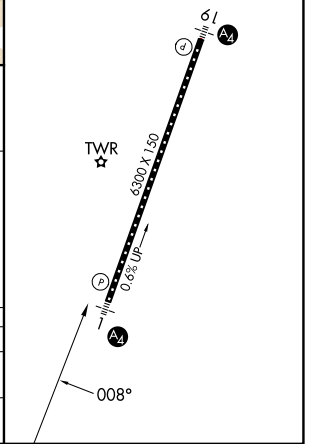
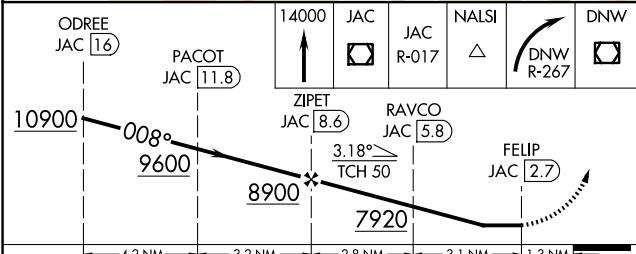
JACKSON HOLE (JAC)

DME required.	MALS	MISSED APPROACH: Climb to 14000 direct JAC VOR/DME and on JAC R-017 to NALSI INT/JAC 16.5 DME and right turn on DNW R-267 to DNW VOR/DME and hold, continue climb-in-hold to 14000.

D-ATIS 120.625	SALT LAKE CENTER 133.25 285.6	JACKSON TOWER* 118.075 (CTAF)	GND CON 124.55	UNICOM 122.95
--------------------------	---	---	--------------------------	-------------------------



ELEV 6451	D	TDZE 6431
CL Rwy 1-19	1	
HIRL Rwy 1-19	1	



CATEGORY	A	B	C	D
S-1	7800/55 1369 (1400-1)	7800-1¼ 1369 (1400-1¼)	7800-3 1369 (1400-3)	
CIRCLING	7800-1¼ 1349 (1400-1¼)	7800-1½ 1349 (1400-1½)	7800-3 1349 (1400-3)	NA

NW-1, 11 JUN 2026 to 09 JUL 2026

NW-1, 11 JUN 2026 to 09 JUL 2026