

# ILS or LOC RWY 13

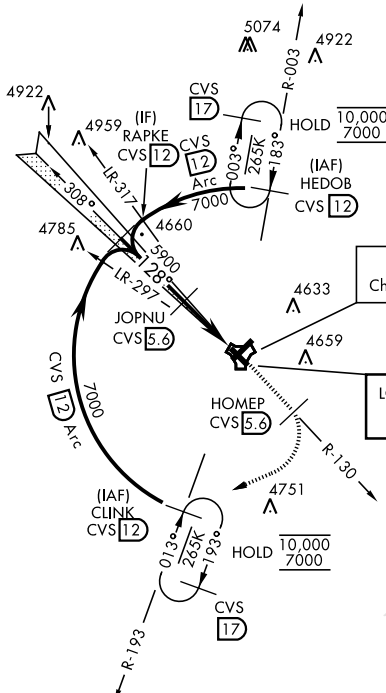
LOC I-OVI <b>110.35</b>	APCH CRS <b>128°</b>	Rwy Idg 8194 TDZE 4294 Arprt Elev 4295	[USAF]	CANNON AFB (KCVS)
----------------------------	-------------------------	---	--------	-------------------

RADAR or DME required. Missed approach requires use of RNAV or RADAR monitoring.

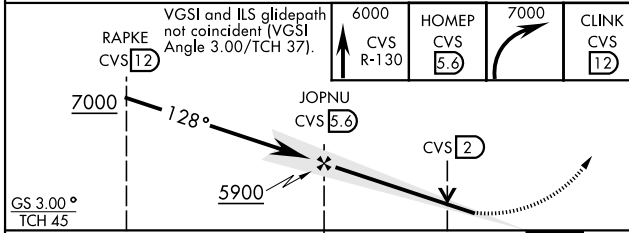
▼ \* When ALS inop, increase vis to ¾ mile.  
\*\* When ALS inop, increase CAT AB vis to 1 mile; CAT CDE vis to 1¾ miles.

MALS R (A5) MISSED APPROACH: Climb to 6000 out CVS TACAN R-1305.6 DME (HOMEP) then climbing right turn to 7000 intercept CVS R-193 to 12 DME (CLINK) and hold.

ATIS <b>119.1 269.9</b>	APP CON <b>118.425 352.1</b>	TOWER <b>120.4 270.25</b>	GND CON <b>121.9 275.8</b>
----------------------------	---------------------------------	------------------------------	-------------------------------



EMERG SAFE ALT 100 NM 8000



ELEV	4295	TDZE	4294
128°	4525	4433	(A1)
4327	TWR 4437	10.001 x 1.50	(A2)
(A5)	(B)	0.3% DOWN	(A1)
(A1)	(A)	(A5)	(A5)
HIRL all rwys			
FAF to MAP 4.9 NM			
Knots	60	90	120 150 180
Min:Sec	4:54	3:16	2:27 1:58 1:38

CATEGORY	A	B	C	D	E
S-ILS 13 *	4544-½		250	(300-½)	
S-LOC 13**	4760-½ 466 (500-½)		4760-1 466 (500-1)		
CIRCLING	4840-1 545 (600-1)		4860-1½ 565(600-1½)		5000-2¼ 705(800-2¼) 5020-2½ 725(800-2½)

# ILS or LOC RWY 13

SW-1, 11 JUN 2026 to 09 JUL 2026

SW-1, 11 JUN 2026 to 09 JUL 2026