

ILS or LOC RWY 31

LOC I-BNN 108.3	APCH CRS 308°	Rwy Idg 8194	TDZE 4270
		Arprt Elev 4295	

[USAF]

CANNON AFB (KCVS)

RADAR or DME required. Missed approach requires use of RNAV or RADAR monitoring.

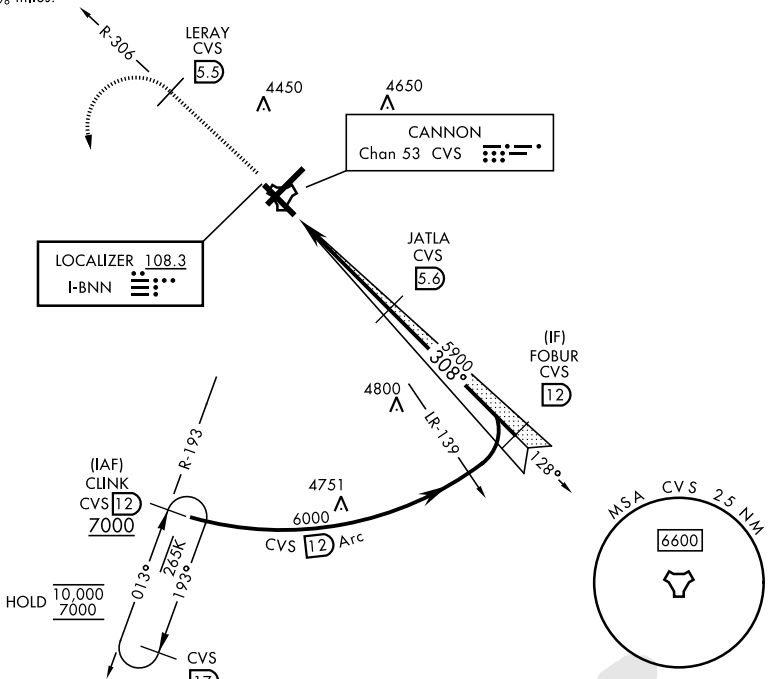
MALSR
(A5)

MISSED APPROACH: Climb to 6000 out CVS TACAN R-306 to 5.5 DME (LERAY) then turn left climbing to 7000 intercept CVS R-193 to 12 DME (CLINK) and hold.

▼ * When ALS inop, increase vis to ¼ mile.

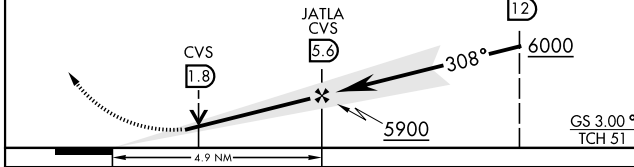
ATIS 119.1 269.9	APP CON 118.425 352.1	TOWER 120.4 270.25	GND CON 121.9 275.8
----------------------------	---------------------------------	------------------------------	-------------------------------

** When ALS inop, increase CAT AB vis to 1 mile, CAT CDE vis to 1 ½ miles.



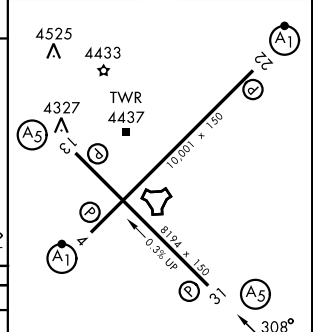
EMERG SAFE ALT 100 NM 9000

6000 ↑	LERAY CVS (5.5)	7000 ↖	CLINK CVS (12)	VGSI TCH (41') and the procedure TCH (51') is greater than 3'.
-----------	---------------------------	-----------	--------------------------	--



CATEGORY	A	B	C	D	E
S-ILS 31*	4470-½		200	(200-½)	
S-LOC 31**	4660-½ 390 (400-½)		4660-5/8 390 (400-5/8)		
CIRCLING	4840-1		4860-1½	5000-2¼	5020-2½
	545 (600-1)		565 (600-1½)	705 (800-2¼)	725 (800-2½)

ELEV	4295	TDZE	4270
------	------	------	------



HIRL all rwys					
FAF to MAP 4.9 NM					
Knots	60	90	120	150	180
Min:Sec	4:54	3:16	2:27	1:58	1:38

ILS or LOC RWY 31

SW-1, 11 JUN 2026 to 09 JUL 2026

SW-1, 11 JUN 2026 to 09 JUL 2026