

# ILS or LOC RWY 4

LOC I-GLO <b>108.5</b>	APCH CRS <b>038°</b>	Rwy Idg <b>10,001</b> TDZE <b>4284</b> Arprt Elev <b>4295</b>
---------------------------	-------------------------	---

[USAF]

CANNON AFB (KCVS)

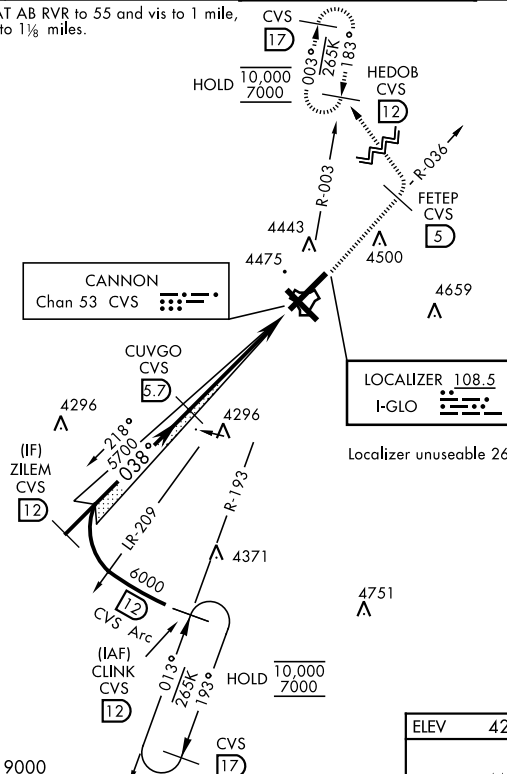
RADAR or DME required. Missed approach requires use of RNAV or RADAR monitoring.

ALSF-1 MISSED APPROACH: Climb to 6000 out CVS TACAN R-036 to 5 DME (FETEP) turning left climb to 7000 intcp CVS R-003 to 12 DME (HEDOB) and hold.

\*When ALS inop, increase all CAT RVR to 40 and vis to 3/4 miles.

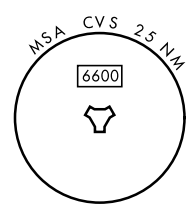
ATIS <b>119.1 269.9</b>	APP CON <b>118.425 352.1</b>	TOWER <b>120.4 270.25</b>	GND CON <b>121.9 275.8</b>
----------------------------	---------------------------------	------------------------------	-------------------------------

\*\*When ALS inop, increase CAT AB RVR to 55 and vis to 1 mile, CAT CDE RVR to 60 and vis to 1 1/2 miles.

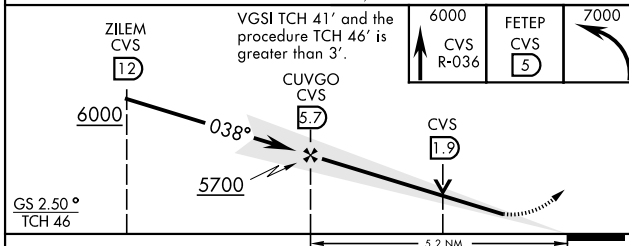


LOCALIZER **108.5**  
I-GLO

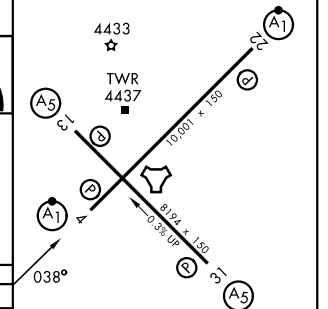
Localizer unuseable 26° right of course.



EMERG SAFE ALT 100 NM 9000



ELEV 4295	TDZE 4284
-----------	-----------



CATEGORY	A	B	C	D	E
S-ILS 4 *	4484/24		200	(200-1/2)	
S-LOC 4 **	4680/24	396 (400-1/2)	4680/35	396 (400-3/4)	
CIRCLING	4840-1	545 (600-1)	4860-1 1/2 565 (600-1 1/2)	5000-2 1/4 705 (800-2 1/4)	5020-2 1/2 725 (800-2 1/2)

HIRL all rwys					
FAF to MAP 5.2 NM					
Knots	60	90	120	150	180
Min:Sec	5:12	3:28	2:36	2:05	1:44

# ILS or LOC RWY 4

SW-1, 11 JUN 2026 to 09 JUL 2026

SW-1, 11 JUN 2026 to 09 JUL 2026