

CLOVIS, NEW MEXICO

# RNAV (GPS) RWY 13

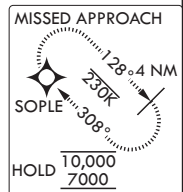
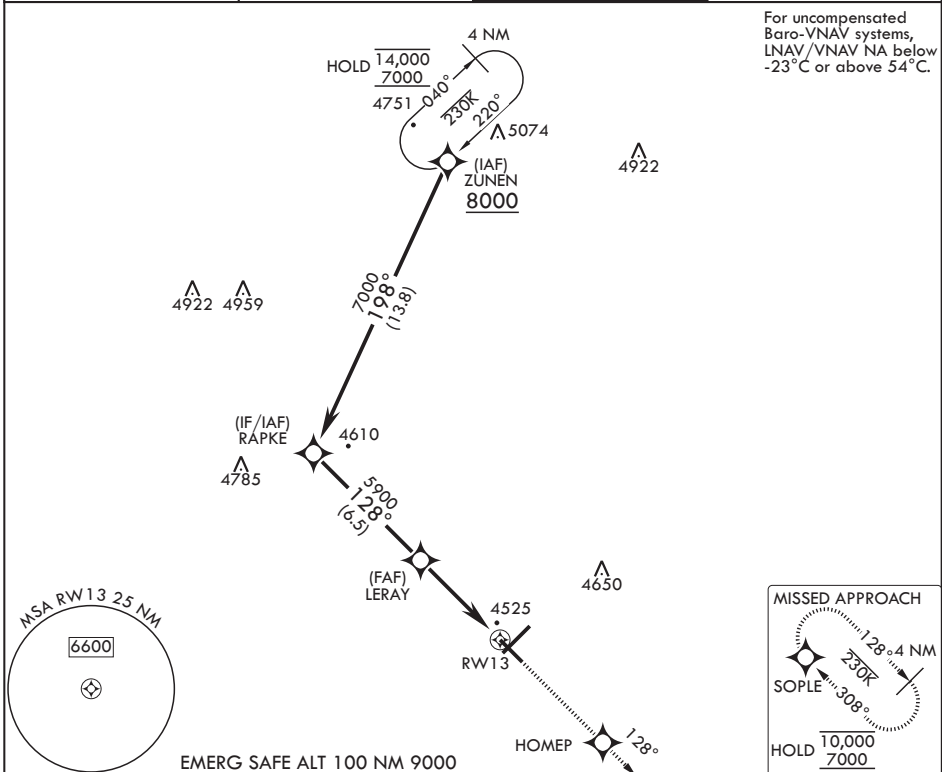
(USAF)

CANNON AFB (KCVS)

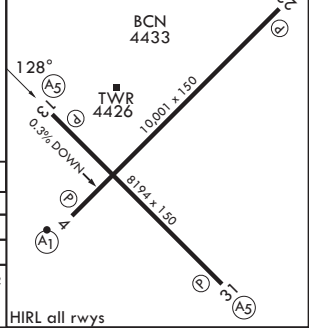
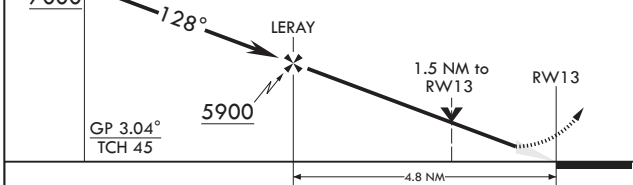
APCH CRS <b>128°</b>	Rwy Idg TDZE Arprt Elev	<b>8194</b> <b>4294</b> <b>4295</b>
-------------------------	-------------------------------	---

RNP APCH	MALSRL	MISSED APPROACH: Climb to 7000 direct HOMEP, then track 128° to SOPLE and hold.
* When ALS inop increase vis to 1 3/8 miles. ** When ALS inop, increase CAT AB vis to 1 mile, CAT CDE vis to 1 1/2 miles.		(A5)

ATIS <b>119.1 269.9</b>	CANNON APP CON <b>118.425 352.1</b>	TOWER <b>120.4 270.25</b>	GND CON <b>121.9 275.8</b>
----------------------------	--	------------------------------	-------------------------------



RAPKE	VGSI and RNAV glidepath not coincident (VGSI Angle 3.00/TCH 37).	7000	HOMEP	tr 128°	SOPLE	ELEV 4295	TDZE 4294
-------	--	------	-------	---------	-------	-----------	-----------



CATEGORY	A	B	C	D	E
LNAV/VNAV DA*	4766-1		472	(500-1)	
LNAV MDA**	4820-1/2 526 (600-1/2)		4820-1	526	(600-1)
CIRCLING	4840-1 545 (600-1)		4860-1 1/2 565 (600-1 1/2)	5000-2 1/4 705 (800-2 1/4)	5020-2 1/2 725 (800-2 1/2)

HIRL all rwys

CLOVIS, NEW MEXICO  
Amdt 4 07OCT21

34°23'N - 103°19'W

CANNON AFB (KCVS)

# RNAV (GPS) RWY 13

SW-1, 11 JUN 2026 to 09 JUL 2026

SW-1, 11 JUN 2026 to 09 JUL 2026