

CLOVIS, NEW MEXICO

RNAV (GPS) RWY 22

WAAS CH 41173 W22A	APCH CRS 218°	Rwy ldg TDZE Arprt Elev	10,001 4295 4295
--------------------------	------------------	-------------------------------	------------------------

(USAF)

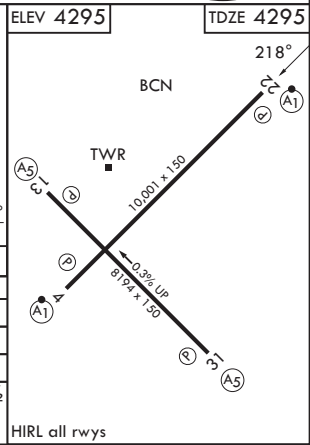
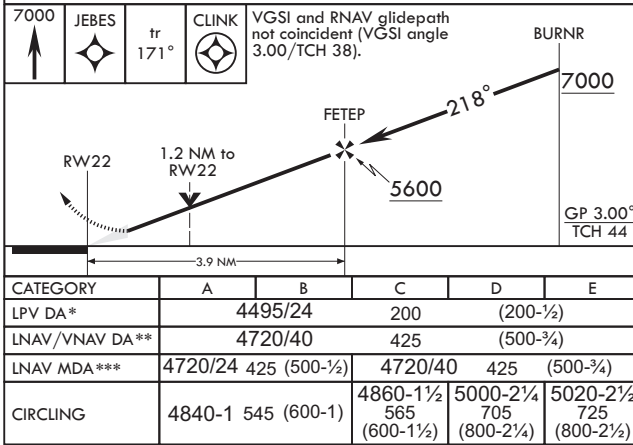
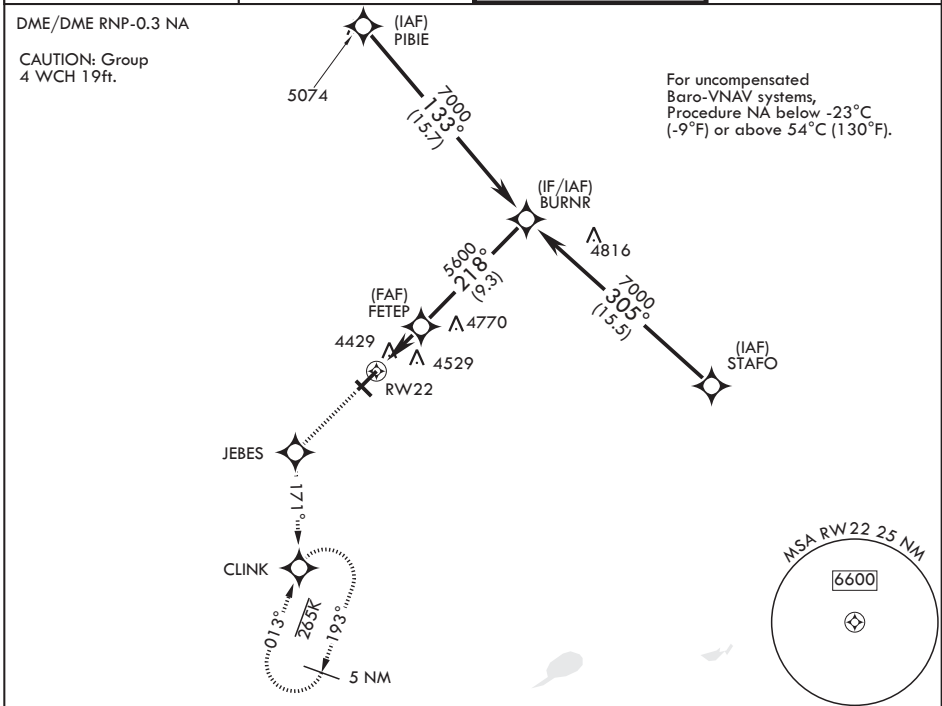
CANNON AFB (KCVS)

Missed approach requires use of RNAV or ATC radar monitoring.

▼ * When ALS inop, increase RVR to 40, vis to 3/4 mile.
 ** When ALS inop, increase vis to 1 1/4 miles.
 *** When ALS inop, increase CAT AB RVR to 55, vis to 1 mile;
 CAT CDE vis to 1 1/4 miles.

ALS-1 MISSED APPROACH: Climb to 7000 direct JEBES, track 171° to CLINK and hold.

ATIS 119.1 269.9	CANNON APP CON 118.425 352.1	TOWER 120.4 270.25	GND CON 121.9 275.8
---------------------	---------------------------------	-----------------------	------------------------



CLOVIS, NEW MEXICO
Amdt 6 16JUL20

34°23'N - 103°19'W

CANNON AFB (KCVS)

RNAV (GPS) RWY 22

SW-1, 11 JUN 2026 to 09 JUL 2026

SW-1, 11 JUN 2026 to 09 JUL 2026