

CLOVIS, NEW MEXICO

RNAV (GPS) RWY 4

WAAS CH 41172 W04A	APCH CRS 038°	Rwy ldg TDZE 4284 Arprt Elev 4295	10,001
--------------------------	------------------	--	--------

(USAF)

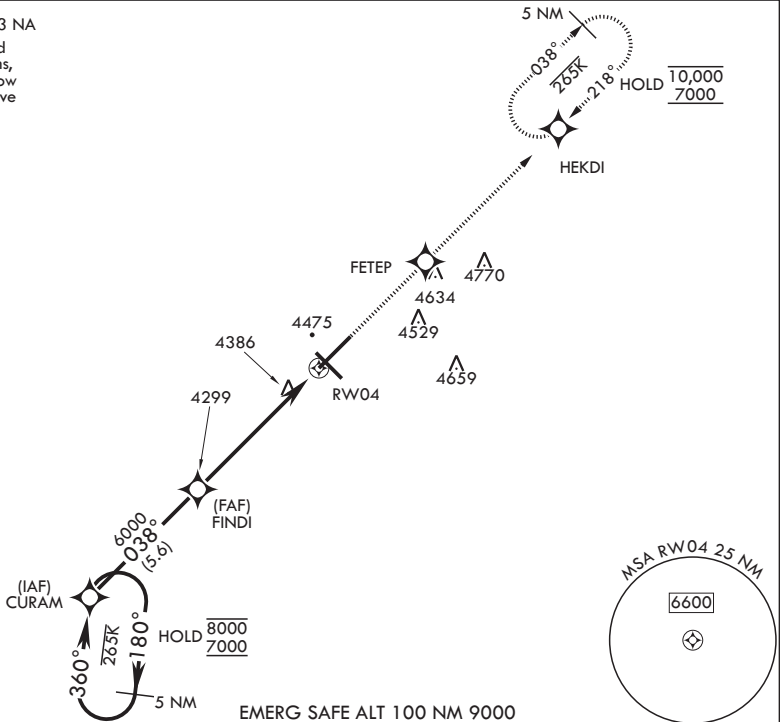
CANNON AFB (KCVS)

▼ * When ALS inop, increase RVR to 40, vis to 3/4 mile.
 ** When ALS inop increase RVR to 60 vis to 1 1/8 miles.
 *** When ALS inop, increase CAT AB RVR to 55, vis to 1 mile;
 CAT CDE RVR to 60, vis to 1 1/8 miles.

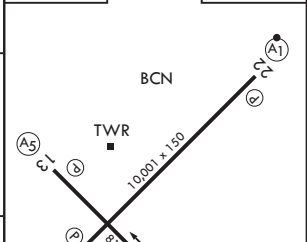
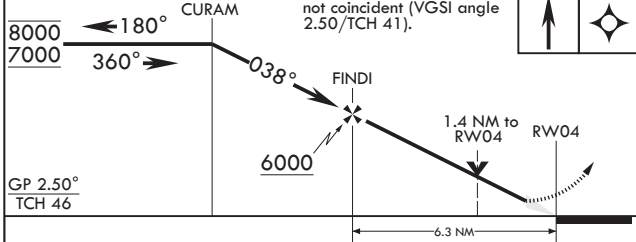
ALSF-1 MISSED APPROACH: Climb to 7000 direct FETEP, then track to HEKDI and hold.

ATIS 119.1 269.9	CANNON APP CON 118.425 352.1	TOWER 120.4 270.25	GND CON 121.9 275.8
---------------------	---------------------------------	-----------------------	------------------------

DME/DME RNP-0.3 NA
 For uncompensated Baro-VNAV systems,
 Procedure NA below 7°C (45°F) or above 54°C (130°F).



5 NM Holding Pattern CURAM	VGSI and RNAV glidepath not coincident (VGSI angle 2.50/TCH 41).	7000	FETEP	ELEV 4295	TDZE 4284
----------------------------	--	------	-------	-----------	-----------



CATEGORY	A	B	C	D	E
LPV DA*	4484/24		200	(200-1/2)	
LNAV/VNAV DA**	4700/40		416	(500-3/4)	
LNAV MDA***	4700/24	416 (500-1/2)	4700/40	416	(500-3/4)
CIRCLING	4840-1 545 (600-1)		4840-1 1/2 545 (600-1 1/2)	4980-2 1/4 685 (700-2 1/4)	5020-2 1/2 725 (800-2 1/2)



CLOVIS, NEW MEXICO
 Amdt 3 07OCT21

34°23'N - 103°19'W

CANNON AFB (KCVS)

RNAV (GPS) RWY 4

SW-1, 11 JUN 2026 to 09 JUL 2026

SW-1, 11 JUN 2026 to 09 JUL 2026