

TACAN RWY 13

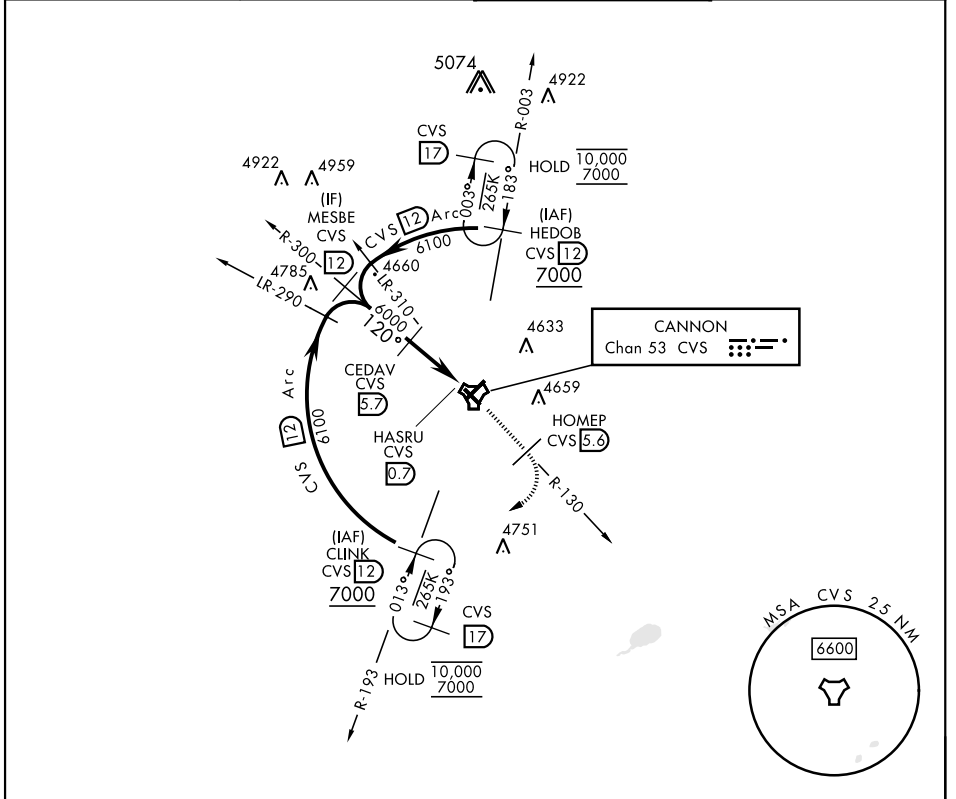
TACAN CVS Chan 53	APCH CRS 120°	Rwy Idg 8194 TDZE 4294 Arprt Elev 4295	[USAF]	CANNON AFB (KCVS)
-----------------------------	-------------------------	---	--------	-------------------

Missed approach requires use of RNAV or RADAR monitoring.

▼ * When ALS inop, increase CAT AB vis to 1 mile, CAT CDE vis to 1 3/8 miles.

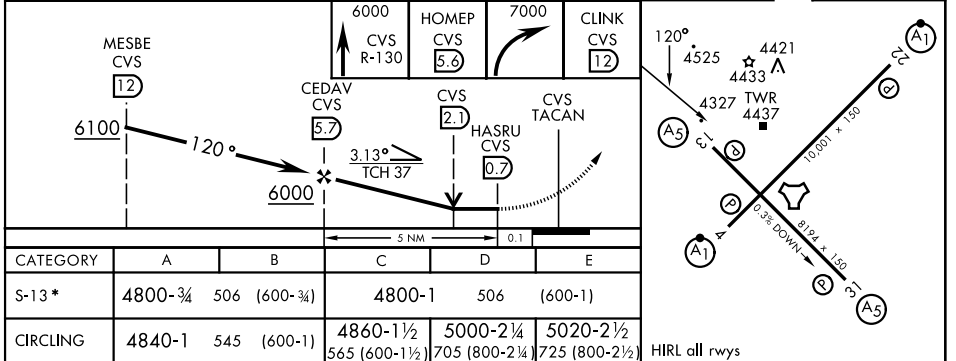
MALSR (A5) MISSED APPROACH: Climb to 6000 out CVS TACAN R-130 to 5.6 DME (HOMEP) then turn right climbing to 7000 intercept CVS R-193 to 1.2 DME (CLINK) and hold.

ATIS 119.1 269.9	APP CON 118.425 352.1	TOWER 120.4 270.25	GND CON 121.9 275.8
----------------------------	---------------------------------	------------------------------	-------------------------------



EMERG SAFE ALT 100 NM 9000

ELEV	4295	TDZE	4294
------	------	------	------



TACAN RWY 13

SW-1, 11 JUN 2026 to 09 JUL 2026

SW-1, 11 JUN 2026 to 09 JUL 2026