

CLOVIS, NEW MEXICO

TACAN RWY 31

TACAN CVS Chan 53	APCH CRS 316°	Rwy ldg TDZE 8194 4270	Arprt Elev 4295
----------------------	------------------	------------------------------	--------------------

(USAF)

CANNON AFB (KCVS)

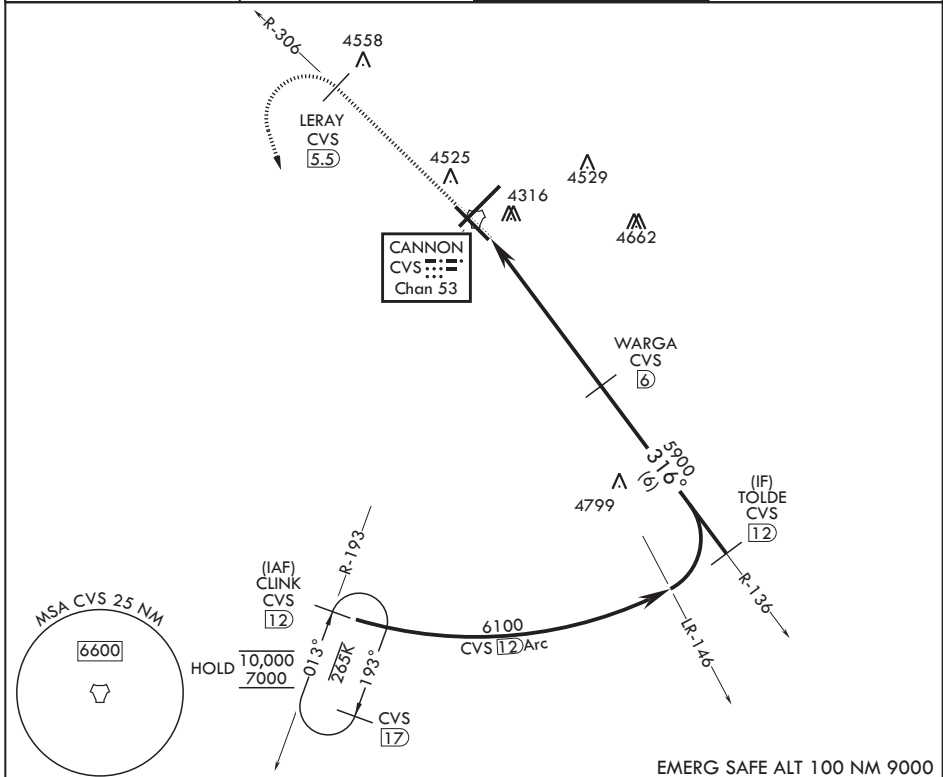
Missed approach requires use of RNAV or ATC radar monitoring.

▼ * When ALS inop, increase CAT AB vis to 1 mile, CAT CDE increase vis to 1 3/8 miles.



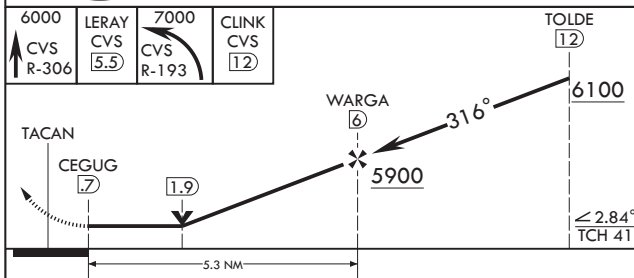
MISSED APPROACH: Climb to 6000 out CVS TACAN R-306 to 5.5 DME (LERAY) then turn left climbing to 7000 intercept CVS TACAN R-193 to 1.2 DME (CLINK) and hold.

ATIS 119.1 269.9	CANNON APP CON 118.425 352.1	TOWER 120.4 270.25	GND CON 121.9 275.8
---------------------	---------------------------------	-----------------------	------------------------



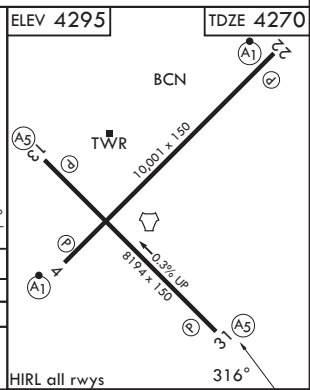
SW-1, 11 JUN 2026 to 09 JUL 2026

SW-1, 11 JUN 2026 to 09 JUL 2026



EMERG SAFE ALT 100 NM 9000

CATEGORY	A	B	C	D	E
S-31*	4700-1/2 430 (500-1/2)		4700-3/4 430 (500-3/4)		
CIRCLING	4840-1 545 (600-1)		4860-1 1/2 565 (600-1 1/2)	5000-2 1/4 705 (800-2 1/4)	5020-2 1/2 725 (800-2 1/2)



CLOVIS, NEW MEXICO
Amdt 3 10OCT19

34°23'N - 103°19'W

CANNON AFB (KCVS)

TACAN RWY 31