

LOC/DME I-EVV 109.9 Chan 36	APP CRS 221°	Rwy Ldg TDZE 422 Apt Elev 422	8021
---	------------------------	---	-------------

ILS or LOC RWY 22

EVANSVILLE RGNL (E V V)

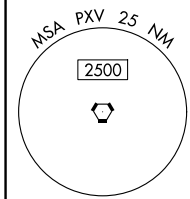
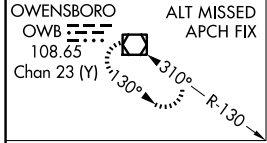
RADAR or DME required for procedure entry at AUGUS.

⚠ Circling Rwy 9 NA at night. For inop ALS, increase S-LOC 22 Cats C and D visibility to 1 $\frac{3}{4}$ SM. DME minimums: For inop ALS, increase S-LOC 22 Cats C and D visibility to RVR 6000. * RVR 1800 authorized with use of FD or AP or HUD to DA.

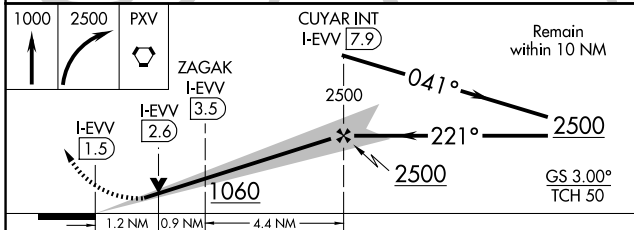
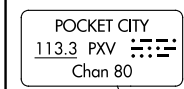


MISSED APPROACH: Climb to 1000 then climbing right turn to 2500 direct PXV VORTAC and hold.

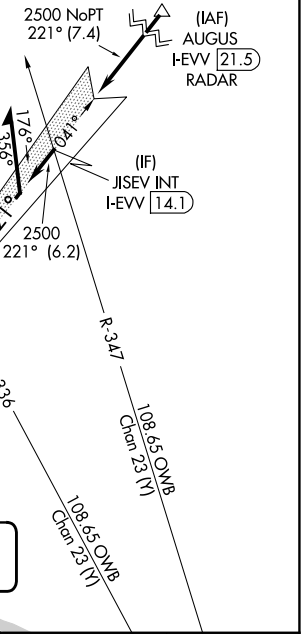
ATIS 120.2	EVANSVILLE APP CON ★ 124.025 290.9	EVANSVILLE TOWER ★ 118.7 (CTAF) 257.8	GND CON 121.9	UNICOM 122.95
----------------------	--	---	-------------------------	-------------------------



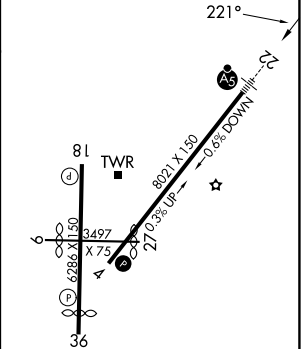
Procedure NA for arrival on PXV VORTAC airway radials 355 CW 151.



CATEGORY	A	B	C	D
S-ILS 22*	622/24		200 (200- $\frac{1}{2}$)	
S-LOC 22	1060/24	638 (700- $\frac{1}{2}$)	1060-1 $\frac{3}{8}$	638 (700-1 $\frac{3}{8}$)
CIRCLING	1060-1	638 (700-1)	1060-1 $\frac{3}{4}$ 638 (700-1 $\frac{3}{4}$)	1060-2 638 (700-2)
ZAGAK FIX MINIMUMS (DME REQUIRED)				
S-LOC 22	840/24	418 (500- $\frac{1}{2}$)	840/40	418 (500- $\frac{3}{4}$)
CIRCLING	920-1 498 (500-1)	1040-1 618 (700-1)	1040-1 $\frac{3}{4}$ 618 (700-1 $\frac{3}{4}$)	1040-2 618 (700-2)



ELEV 422	D	TDZE 422
-----------------	----------	-----------------



HRL Rws 4-22 and 18-36					
REIL Rws 4, 18, and 36					
MIRL Rwy 9-27					
FAF to MAP 6.4 NM					
Knots	60	90	120	150	180
Min:Sec	6:24	4:16	3:12	2:34	2:08

EC-2, 11 JUN 2026 to 09 JUL 2026

EC-2, 11 JUN 2026 to 09 JUL 2026