

WAAS CH 82711 W04A	APP CRS 041°	Rwy Ldg TDZE Apt Elev	8021 389 422
--	------------------------	-----------------------------	---

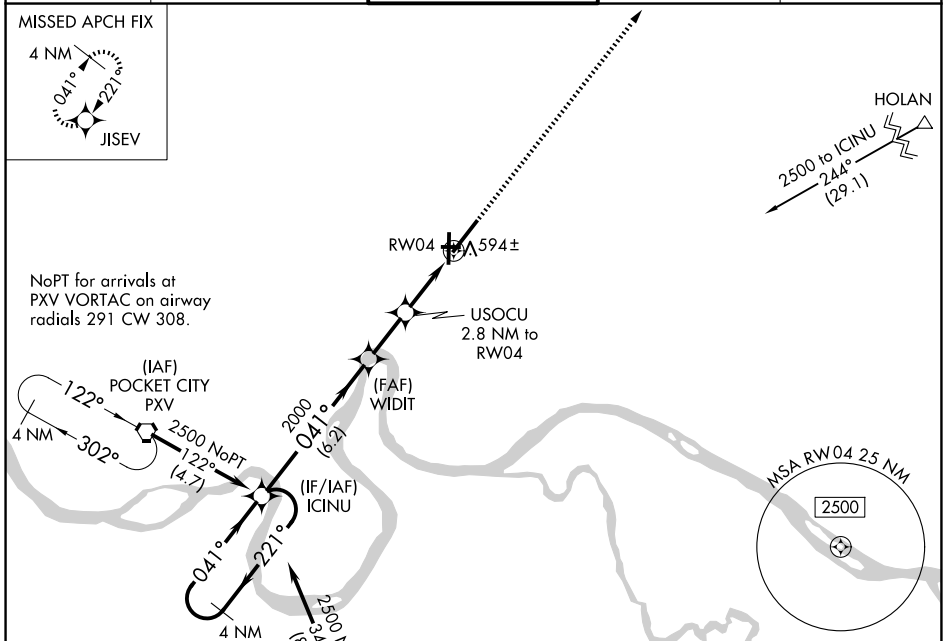
RNAV (GPS) RWY 4

EVANSVILLE RGNL (E V V)

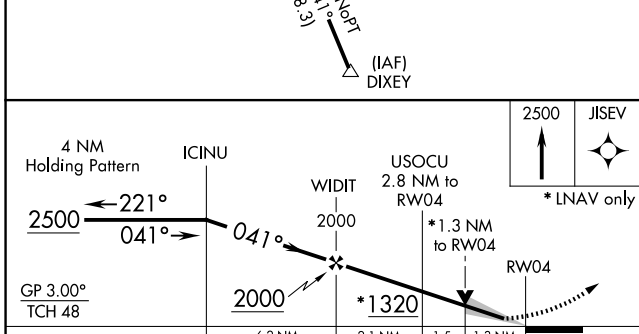
ASR For uncompensated Baro-VNAV systems, LNAV/VNAV NA below -15°C (5°F) or above 54°C (130°F). DME/DME RNP-0.3 NA. Circling Rwy 9 NA at night.

MISSED APPROACH: Climb to 2500 direct JISEV and hold.

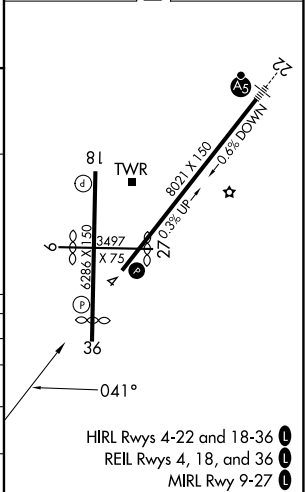
ATIS 120.2	EVANSVILLE APP CON ★ 124.025 290.9	EVANSVILLE TOWER ★ 118.7 (CTAF) 257.8	GND CON 121.9	UNICOM 122.95
----------------------	--	---	-------------------------	-------------------------



NoPT for arrivals at PXV VORTAC on airway radials 291 CW 308.



ELEV 422	D	TDZE 389
----------	----------	----------



CATEGORY	A	B	C	D
LPV DA		589-3/4	200 (200-3/4)	
LNAV/VNAV DA		852-1 5/8	463 (500-1 5/8)	
LNAV MDA	860-1	471 (500-1)	860-1 3/8	471 (500-1 3/8)
CIRCLING	920-1 498 (500-1)	1040-1 618 (700-1)	1040-1 3/4 618 (700-1 3/4)	1040-2 618 (700-2)

EC-2, 11 JUN 2026 to 09 JUL 2026

EC-2, 11 JUN 2026 to 09 JUL 2026

- HIRL Rwy 4-22 and 18-36
- REIL Rwy 4, 18, and 36
- MIRL Rwy 9-27