

WAAS CH 90124 W31A	APP CRS 308°	Rwy Ldg TDZE Apt Elev	7000 590 598
--	------------------------	-----------------------------	---

RNAV (GPS) RWY 31

ABRAHAM LINCOLN CAPITAL (SPI)

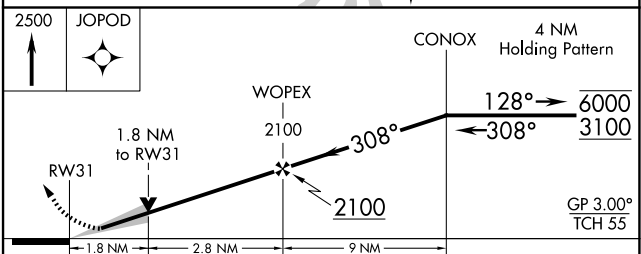
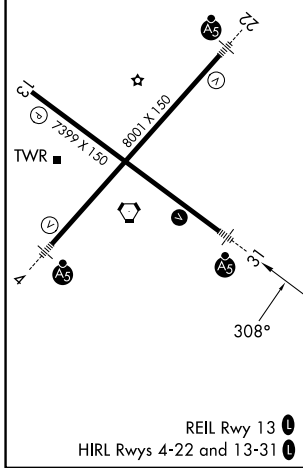
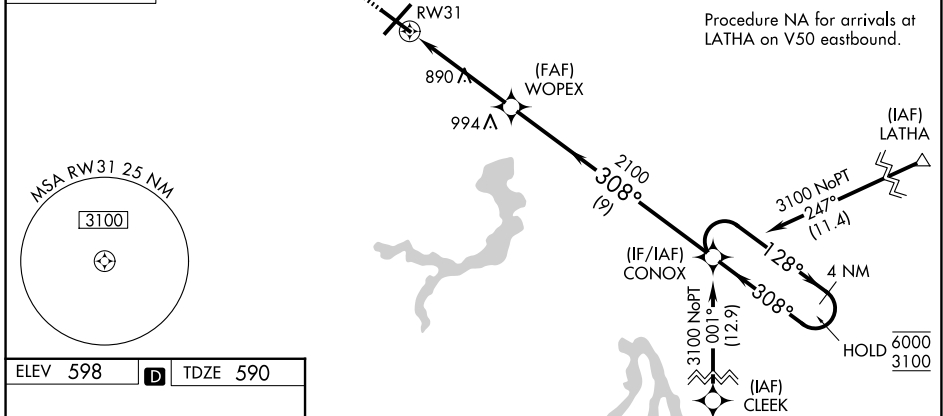
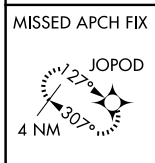
RNP APCH - GPS.

ASR Baro-VNAV and VDP NA when using AAA altimeter setting. Inop table does not apply to LPV.
 For uncompensated Baro-VNAV systems, LNAV/VNAV NA below -16°C or above 54°C. When local altimeter setting not received, use AAA altimeter setting and increase LPV DA to 898 feet; increase LNAV/VNAV DA to 967 feet; increase all MDAs 60 feet and LNAV visibility Cats C and D ½ SM, and Circling visibility Cats C and D ¼ SM. For inop ALS, increase LNAV/VNAV visibility all Cats to ¾ SM, increase LNAV visibility Cats A and B to 1 SM, and Cats C and D to 1 ¼ SM. For inop ALS when using AAA altimeter setting, increase LPV visibility all Cats to ¾ SM, increase LNAV/VNAV visibility all Cats to 1 SM, increase LNAV visibility Cats A and B to 1 SM, and Cats C and D to 1 ¼ SM.

MALSRL

MISSED APPROACH:
Climb to 2500 direct JOPOD and hold.

ATIS 127.65 270.1	SAINT LOUIS APP CON 126.15 323.0	SPRINGFIELD TOWER ★ 121.3 (CTAF) 0 257.8	GND CON 121.9 348.6	UNICOM 122.95
-----------------------------	--	--	-------------------------------	-------------------------



CATEGORY	A	B	C	D
LPV DA		840-¾	250 (300-¾)	
LNAV/VNAV DA		909-¾	319 (400-¾)	
LNAV MDA	1200-¾	610 (700-¾)	1200-1¾	610 (700-1¾)
CIRCLING	1200-1	602 (700-1)	1360-2¼	1380-2½
			762 (800-2¼)	782 (800-2½)

EC-3, 11 JUN 2026 to 09 JUL 2026

EC-3, 11 JUN 2026 to 09 JUL 2026