

WAAS CH <b>70309</b> <b>W04A</b>	APP CRS <b>043°</b>	Rwy Ldg TDZE Apt Elev	<b>7927</b> <b>592</b> <b>598</b>
----------------------------------------	------------------------	-----------------------------	-----------------------------------------

# RNAV (GPS) RWY 4

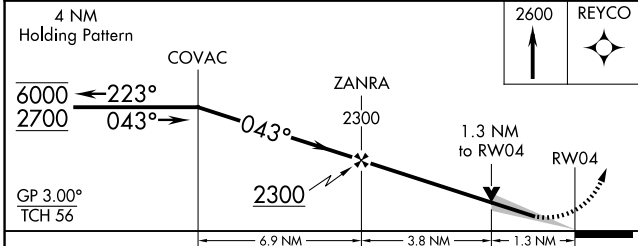
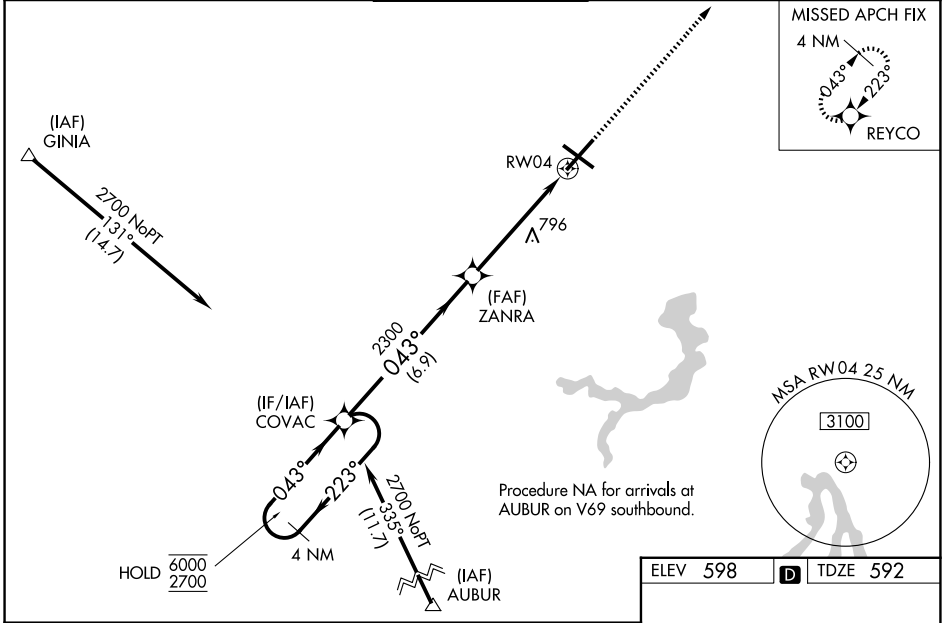
ABRAHAM LINCOLN CAPITAL (SPI)

RNP APCH - GPS.

**ASR** For uncompensated Baro-VNAV systems, LNAV/VNAV NA below -16°C or above 54°C. Baro-VNAV and VDP NA when using AAA altimeter setting. For inop ALS, increase LPV all Cats visibility to RVR 4500 and LNAV Cats C and D visibility to 1 3/8 SM. When local altimeter setting not received, use AAA altimeter setting and increase LPV DA to 912 feet; increase LNAV/VNAV DA to 989 feet and all visibilities to RVR 3500; increase all MDAs 60 feet and LNAV visibility Cats C and D to RVR 5500 and Circling visibility Cats C and D 1/4 SM. For inop ALS when using AAA altimeter setting, increase LPV all Cats visibility to RVR 4500.

**MALSR** MISSED APPROACH: Climb to 2600 direct REYCO and hold.

ATIS <b>127.65 270.1</b>	SAINT LOUIS APP CON <b>126.15 323.0</b>	SPRINGFIELD TOWER ★ <b>121.3 (CTAF) 257.8</b>	GND CON <b>121.9 348.6</b>	UNICOM <b>122.95</b>
-----------------------------	--------------------------------------------	--------------------------------------------------	-------------------------------	-------------------------



ELEV 598	<b>D</b> TDZE 592
----------	-------------------

REIL Rwy 13  
HIRL Rwy 4-22 and 13-31

CATEGORY	A	B	C	D
LPV DA		854/24	262 (300-1/2)	
LNAV/VNAV DA		931/26	339 (400-1/2)	
LNAV MDA	1060/24	468 (500-1/2)	1060/50	468 (500-1)
CIRCLING	1060-1 462 (500-1)	1100-1 502 (600-1)	1360-2 1/4 762 (800-2 1/4)	1380-2 1/2 782 (800-2 1/2)

EC-3, 11 JUN 2026 to 09 JUL 2026

EC-3, 11 JUN 2026 to 09 JUL 2026