

APP CRS	Rwy Ldg	4498
348°	TDZE	1158
	Apt Elev	1166

RNAV (GPS) RWY 35

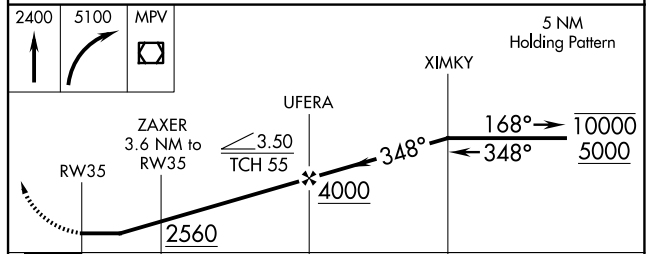
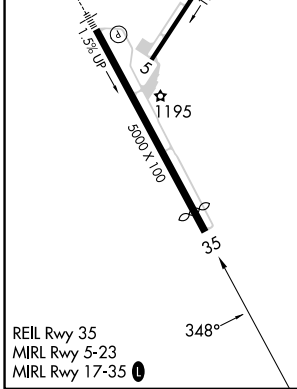
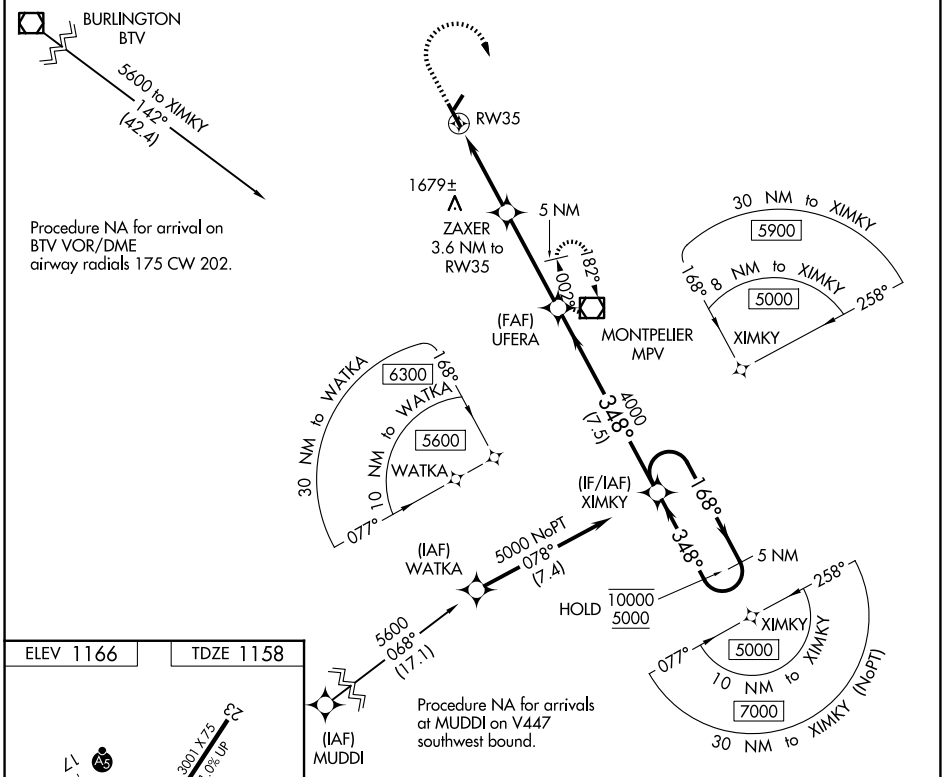
EDWARD F KNAPP STATE (MPV)

RNP APCH:

- Rwy 35 helicopter visibility reduction below 1 SM NA.
- NA When local altimeter setting not received, procedure NA.
- 19°C Straight-in Rwy 35 NA at night, Circling Rwy 5, 35 NA at night.

MISSED APPROACH: (Do not exceed 225K)
Climb to 2400 then climbing right turn to 5100 direct MPV VOR/DME and hold, continue climb-in-hold to 5100.

ASOS 132.675	BOSTON CENTER 135.7 282.2	UNICOM 122.8 (CTAF) 0
------------------------	-------------------------------------	---------------------------------



CATEGORY	A	B	C	D
LNAV MDA	1940-1 782 (800-1)	1940-1¼ 782 (800-1¼)	1940-2½ 782 (800-2½)	782 (800-2½)
CIRCLING	1980-1¼	814 (900-1¼)	2700-3 1534 (1600-3)	2900-3 1734 (1800-3)

NE-1, 11 JUN 2026 to 09 JUL 2026

NE-1, 11 JUN 2026 to 09 JUL 2026