

LOC/DME I-JQX <b>108.9</b> Chan <b>26</b>	APP CRS <b>178°</b>	Rwy Ldg <b>6499</b> TDZE <b>965</b> Apt Elev <b>978</b>
---	------------------------	---

# ILS or LOC RWY 18

JOPLIN RGNL (JLN)

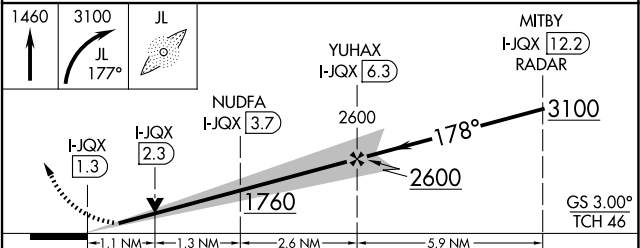
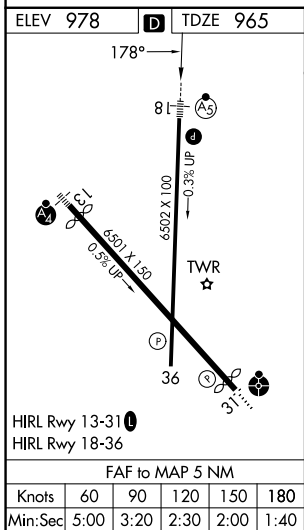
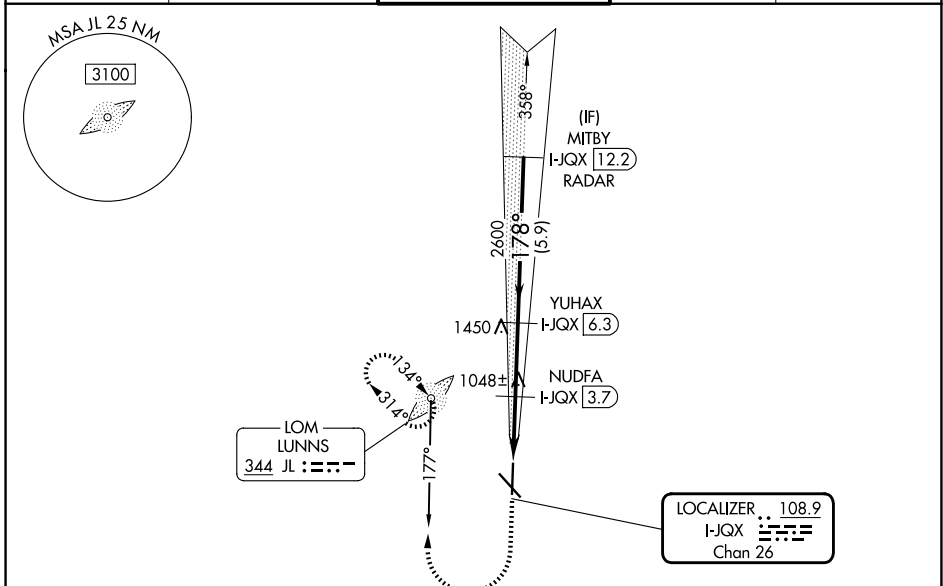
DME required for LOC only. ADF required. RADAR required for procedure entry.

**⚠** Autopilot coupled approach NA below 1147.  
**⚠** For inop ALS, increase S-ILS 18 all Cats visibility to RVR 4500 and S-LOC 18 Cat C/D visibility to RVR 5500.



MISSED APPROACH: Climb to 1460 then climbing right turn to 3100 on LUNNS LOM bearing 177° to LUNNS LOM and hold, continue climb-in-hold to 3100. S-ILS 18\* missed approach requires minimum climb of 204 feet per NM to 2240. (If unable to meet climb gradient use S-ILS 18 minimums).

ATIS <b>120.85</b>	KANSAS CITY CENTER <b>128.6 282.325</b>	JOPLIN TOWER* <b>119.8 (CTAF) 1</b>	GND CON <b>121.6</b>	UNICOM <b>122.95</b>
-----------------------	--	--	-------------------------	-------------------------



CATEGORY	A	B	C	D
S-ILS 18*	1165/24		200 (200-1/2)	
S-ILS 18	1240/24		275 (300-1/2)	
S-LOC 18	1340/24	375 (400-1/2)		1340/35 375 (400-5/8)
CIRCLING	1420-1 442 (500-1)	1480-1 502 (600-1)	1540-1 3/4 562 (600-1 3/4)	1600-2 622 (700-2)

NC-3, 11 JUN 2026 to 09 JUL 2026

NC-3, 11 JUN 2026 to 09 JUL 2026