

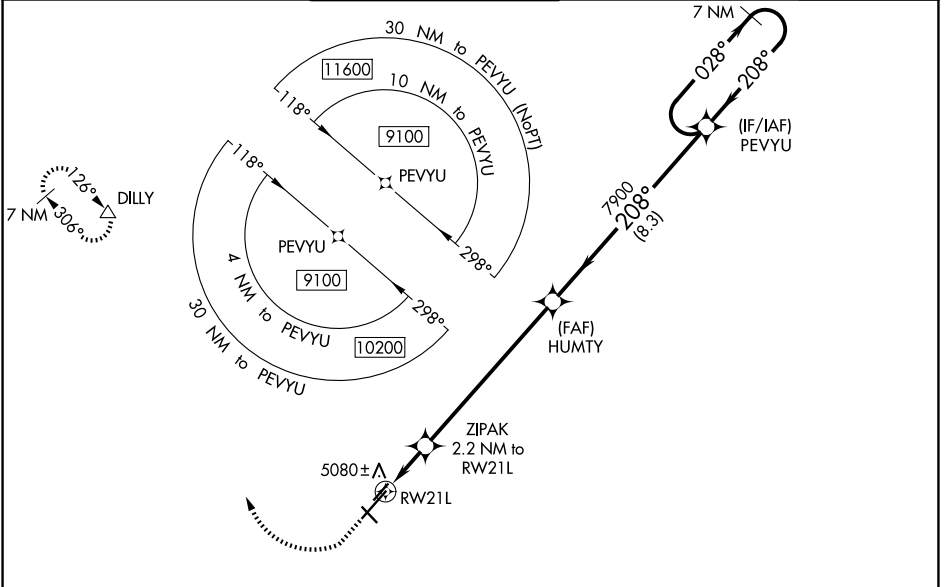
WAAS CH <b>40002</b> <b>W21A</b>	APP CRS <b>208°</b>	Rwy Ldg TDZE Apt Elev	<b>7619</b> <b>4977</b> <b>5045</b>
--	------------------------	-----------------------------	---

# RNAV (GPS) RWY 21L

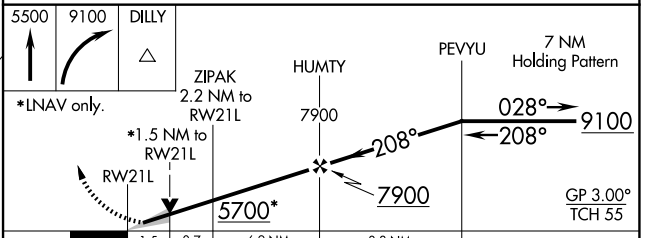
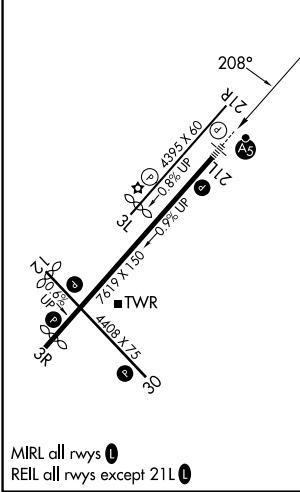
PRESCOTT RGNL/ERNEST A LOVE FLD (P.R.C)

RNP APCH - PLS.	<p>▼ For uncompensated Baro-VNAV systems, LNAV/VNAV NA below -11°C or above 47°C. For inoperative ALS, increase LPV alt Cats visibility to 1 SM, LNAV/VNAV all Cats visibility to 1½ SM, and LNAV Cat C/D visibility to 1¾ SM. Circling Rwy 3L, 12, 30 NA at night. # Missed approach requires a minimum climb of 345 feet per NM to 7300.</p>	MALSR 	MISSED APPROACH: Climb to 5500 then climbing right turn to 9100 direct DILLY and hold, continue climb-in-hold to 9100.
-----------------	--	-----------	--

ATIS <b>127.2</b>	PHOENIX APP CON <b>133.575 281.55</b>	PRESCOTT TOWER * <b>125.3 (CTAF) 257.9</b>	GND CON <b>121.7</b>	<b>128.750</b>	UNICOM <b>122.95</b>
----------------------	--	---	-------------------------	----------------	-------------------------



ELEV 5045	<b>D</b>	TDZE 4977
-----------	----------	-----------



CATEGORY	A	B	C	D
LPV DA#		5177-½	200 (200-½)	
LPV DA		5277-½	300 (300-½)	
LNAV/VNAV DA		5391-¾	414 (400-¾)	
LNAV MDA	5480-½	503 (500-½)	5480-1	503 (500-1)
CIRCLING	5520-1 475 (500-1)	5760-1 715 (800-1)	6080-3 1035 (1100-3)	6680-3 1635 (1700-3)

PRESCOTT, ARIZONA  
Amdt 2D 19MAY22

34°39'N-112°25'W

PRESCOTT RGNL/ERNEST A LOVE FLD (P.R.C)  
**RNAV (GPS) RWY 21L**

SW-4, 11 JUN 2026 to 09 JUL 2026

SW-4, 11 JUN 2026 to 09 JUL 2026

MIRL all rwy's  
REIL all rwy's except 21L