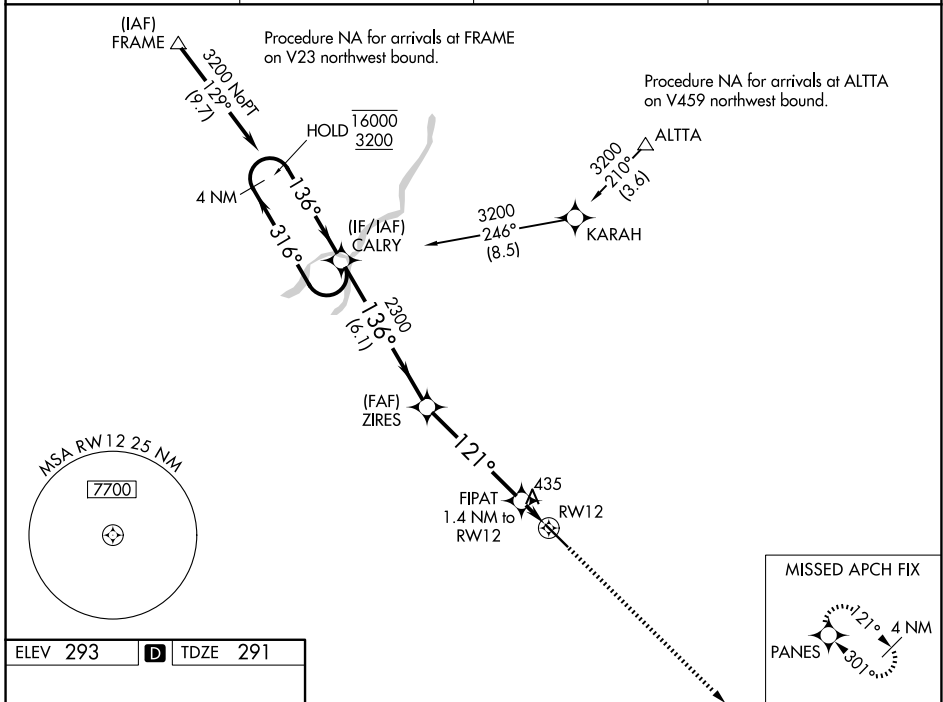


WAAS CH <b>82423</b> <b>W12A</b>	APP CRS <b>121°</b>	Rwy Ldg TDZE Apt Elev	<b>5635</b> <b>291</b> <b>293</b>
--	------------------------	-----------------------------	---

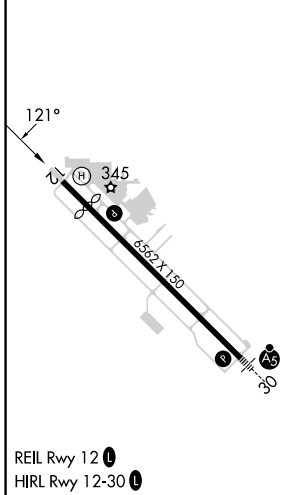
# RNAV (GPS) RWY 12

VISALIA MUNI (VIS)

RNP APCH - GPS.		MISSED APPROACH: Climb to 2900 direct PANES and hold.	
<p>▼ For uncompensated Baro-VNAV systems, LNAV/VNAV NA below -15°C or above 54°C.</p> <p>▲</p>			
AWOS-3PT <b>119.925</b>	FRESNO APP CON <b>118.5</b>	CINC DEL <b>118.5</b>	UNICOM <b>123.05 (CTAF) 0</b>



ELEV 293	<b>D</b>	TDZE 291
----------	----------	----------



4 NM Holding Pattern CALRY				VGSI and RNAV glidepath not coincident (VGSI Angle 3.00/TCH 40).		2900	PANES
16000 3200		← 316° → 136°		2300		FIPAT 1.4 NM to RWY 12	RWY 12
GP 3.00° TCH 50		2300		121°		780	
		6.1 NM		4.8 NM		1.4 NM	
CATEGORY	A	B	C	D			
LPV DA	541-3/4			250 (300-3/4)			
LNAV/VNAV DA	700-1 1/8			409 (500-1 1/8)			
LNAV MDA	700-1		409 (500-1)		700-1 1/8		409 (500-1 1/8)
CIRCLING	740-1 447 (500-1)	760-1 467 (500-1)	760-1 1/2 467 (500-1 1/2)	940-2 647 (700-2)			

SW-2, 11 JUN 2026 to 09 JUL 2026

SW-2, 11 JUN 2026 to 09 JUL 2026