

WAAS CH <b>77623</b> <b>W30A</b>	APP CRS <b>301°</b>	Rwy Ldg TDZE Apt Elev	<b>5635</b> <b>293</b> <b>293</b>
--	------------------------	-----------------------------	---

# RNAV (GPS) RWY 30

VISALIA MUNI (VIS)

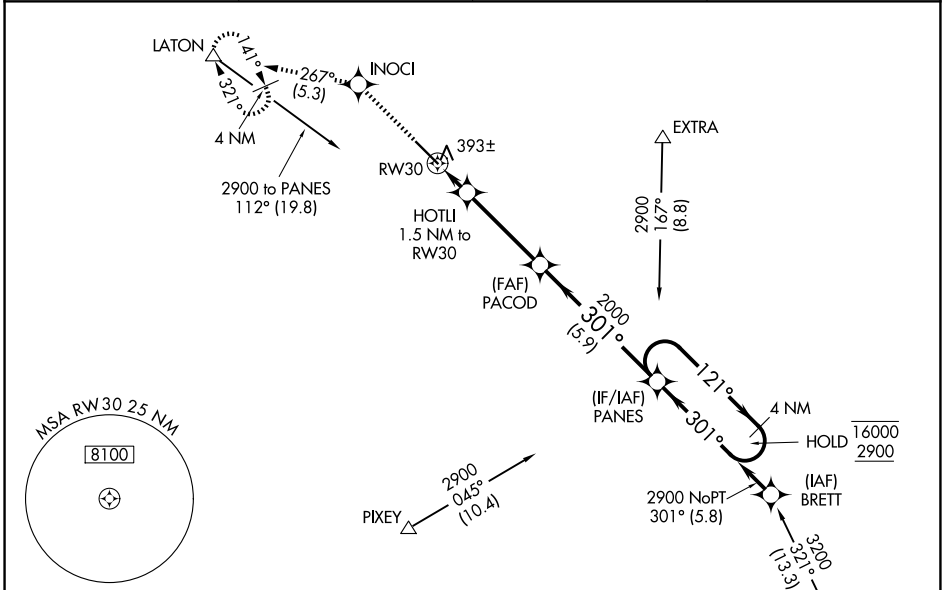
RNP APCH - GPS.

**⚠** For uncompensated Baro-VNAV systems, LNAV/VNAV NA below -15°C or above 54°C. For inop ALS, increase LNAV/VNAV all Cats visibility to 1 SM, and LNAV Cats C/D to 1 SM.

MALSR

**MISSED APPROACH:** Climb to 3000 direct INOCI and on track 267° to LATON and hold, continue climb-in-hold to 3000.

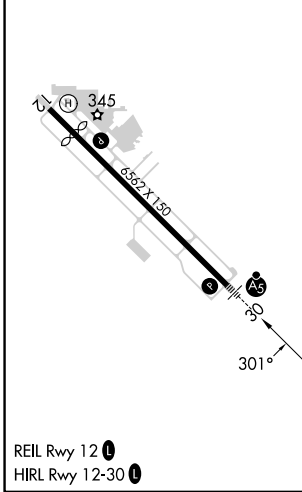
AWOS-3PT <b>119.925</b>	FRESNO APP CON <b>118.5</b>	CLNC DEL <b>118.5</b>	UNICOM <b>123.05</b> (CTAF) <b>📻</b>
----------------------------	--------------------------------	--------------------------	---



SW-2, 11 JUN 2026 to 09 JUL 2026

SW-2, 11 JUN 2026 to 09 JUL 2026

ELEV 293	<b>D</b>	TDZE 293
----------	----------	----------



3000	↑	INOCI	tr 267°	LATON	△	PANES	4 NM Holding Pattern
				HOTLI 1.5 NM to RWY 30		2000	121° → 16000 ← 301° 2900
				820		2000	GP 3.00° TCH 53
				1.5 NM	3.7 NM	5.9 NM	
CATEGORY	A	B	C	D			
LPV DA	500-½		207 (300-½)				
LNAV/VNAV DA	656-⅝		363 (400-⅝)				
LNAV MDA	660-½		367 (400-½)		660-⅝		367 (400-⅝)
CIRCLING	740-1 447 (500-1)	760-1 467 (500-1)	760-1½ 467 (500-1½)	940-2 647 (700-2)			