

# JEFSN TWO DEPARTURE (RNAV) (JEFSN2.JEFSN)

JOINT BASE ANDREWS (ANDREWS AFB) (KADW)

CAMP SPRINGS, MARYLAND

ATIS 133.675 251.05  
 CPDLC  
 GND CON  
 121.8 275.8  
 ANDREWS TOWER  
 118.4 349.0  
 POTOMAC DEP CON  
 (E) 125.65 348.725  
 (W) 118.95 257.2

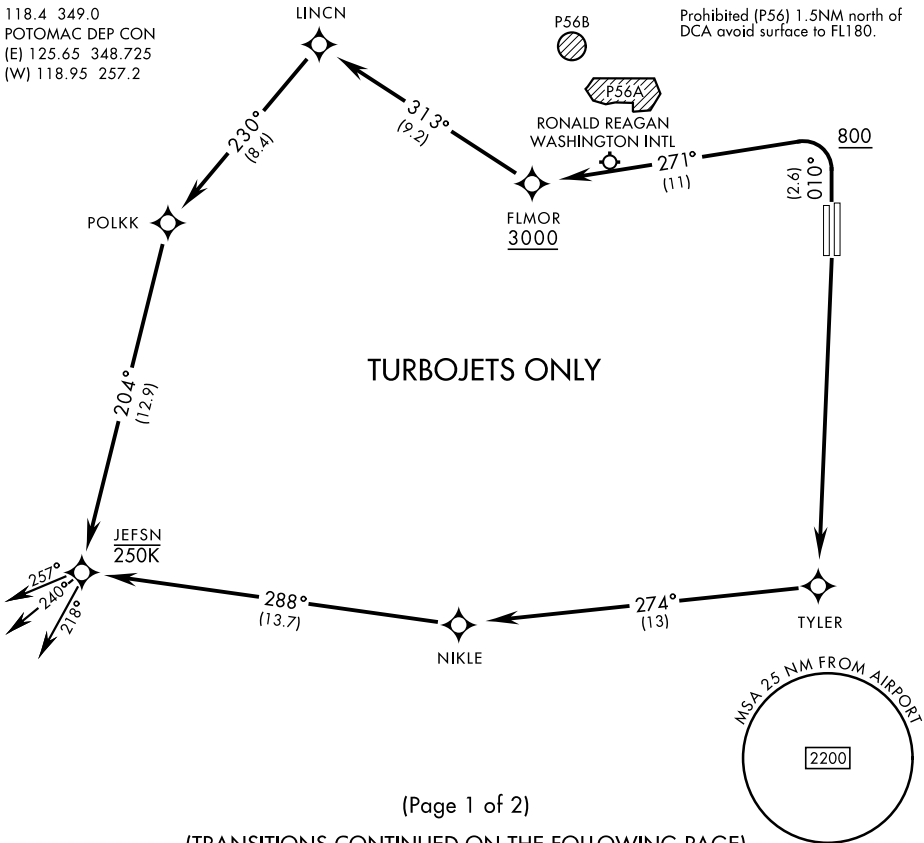
RNAV1-GPS  
 RADAR required

[USAF]

**TOP ALTITUDE:**  
**3000**

Max 250 KIAS until JEFSN

Prohibited (P56) 1.5NM north of DCA avoid surface to FL180.



NE-3, 11 JUN 2026 to 09 JUL 2026

NE-3, 11 JUN 2026 to 09 JUL 2026

(Page 1 of 2)

(TRANSITIONS CONTINUED ON THE FOLLOWING PAGE)



### DEPARTURE ROUTE DESCRIPTION

TAKEOFF RWY 1L/R: Climb on heading 010° to 800, then climbing left turn to 3000 direct FLMOR. Then via depicted route to JEFSN, thence...

TAKEOFF RWY 19L/R: Climb direct TYLER then via depicted route to JEFSN, thence...

... on assigned transition. Maintain 3000, expect further clearance to filed alt within ten (10) minutes after departure.

- FLASK TRANSITION (JEFSN2.FLASK)
- GLANC TRANSITION (JEFSN2.GLANC)
- MAULS TRANSITION (JEFSN2.MAULS)
- MELTN TRANSITION (JEFSN2.MELTN)
- RRSIN TRANSITION (JEFSN2.RRSIN)

# JEFSN TWO DEPARTURE (RNAV) (JEFSN2.JEFSN)

CAMP SPRINGS, MARYLAND