

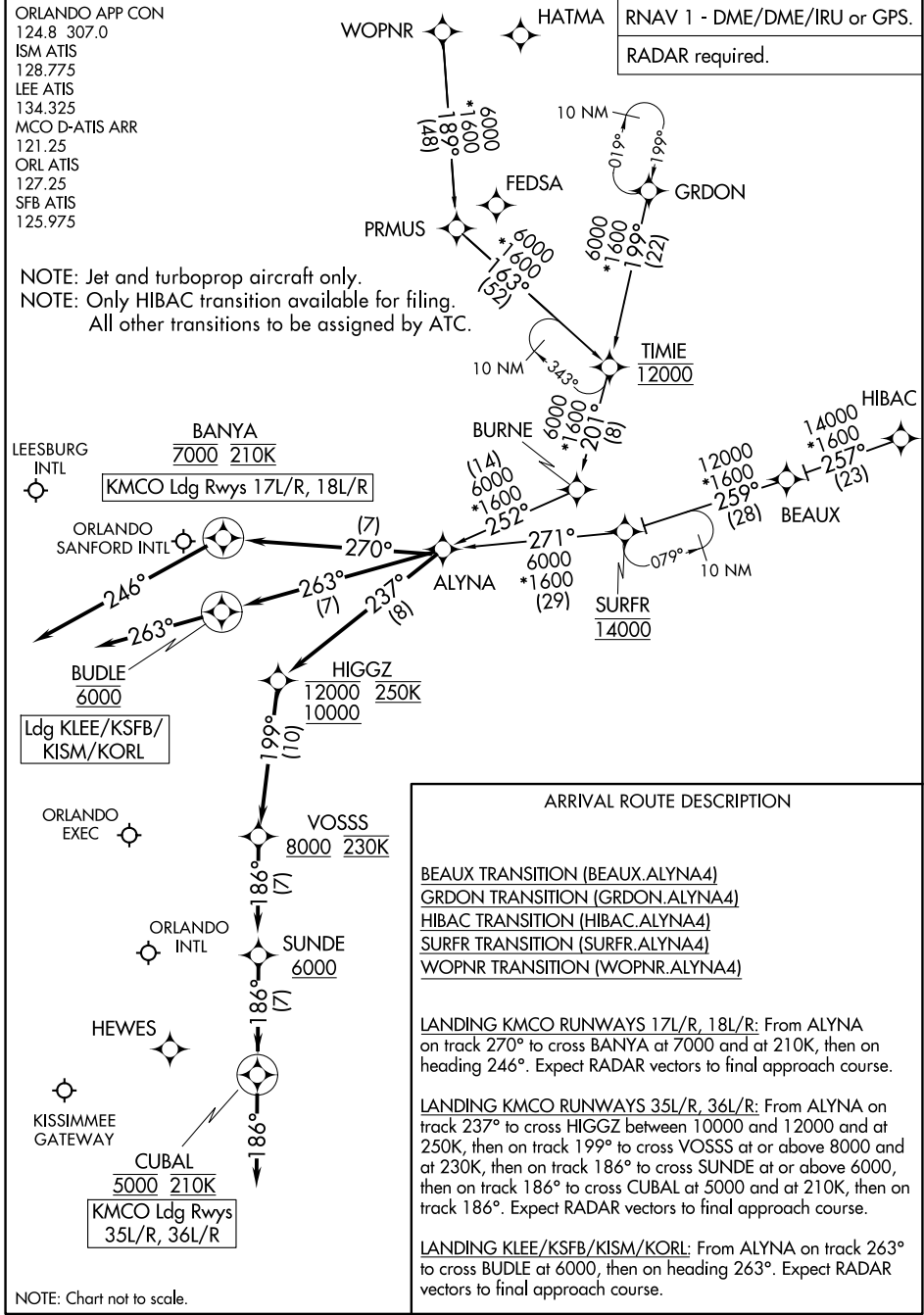
# ALYNA FOUR ARRIVAL (RNAV)

ORLANDO, FLORIDA

ORLANDO APP CON  
 124.8 307.0  
 ISM ATIS  
 128.775  
 LEE ATIS  
 134.325  
 MCO D-ATIS ARR  
 121.25  
 ORL ATIS  
 127.25  
 SFB ATIS  
 125.975

RNAV 1 - DME/DME/IRU or GPS.  
 RADAR required.

NOTE: Jet and turboprop aircraft only.  
 NOTE: Only HIBAC transition available for filing.  
 All other transitions to be assigned by ATC.



### ARRIVAL ROUTE DESCRIPTION

**BEAUX TRANSITION (BEAUX.ALYNA4)**  
**GRDON TRANSITION (GRDON.ALYNA4)**  
**HIBAC TRANSITION (HIBAC.ALYNA4)**  
**SURFR TRANSITION (SURFR.ALYNA4)**  
**WOPNR TRANSITION (WOPNR.ALYNA4)**

**LANDING KMCO RUNWAYS 17L/R, 18L/R:** From ALYNA on track 270° to cross BANYA at 7000 and at 210K, then on heading 246°. Expect RADAR vectors to final approach course.

**LANDING KMCO RUNWAYS 35L/R, 36L/R:** From ALYNA on track 237° to cross HIGGZ between 10000 and 12000 and at 250K, then on track 199° to cross VOSSS at or above 8000 and at 230K, then on track 186° to cross SUNDE at or above 6000, then on track 186° to cross CUBAL at 5000 and at 210K, then on track 186°. Expect RADAR vectors to final approach course.

**LANDING KLEE/KSFB/KISM/KORL:** From ALYNA on track 263° to cross BUDLE at 6000, then on heading 263°. Expect RADAR vectors to final approach course.

NOTE: Chart not to scale.

# ALYNA FOUR ARRIVAL (RNAV)

ORLANDO, FLORIDA

SE-3, 11 JUN 2026 to 09 JUL 2026

SE-3, 11 JUN 2026 to 09 JUL 2026