

FORT RUCKER, ALABAMA

# RNAV (GPS) RWY 36

CAIRNS AAF (FORT RUCKER) (KOZR)

WAAS CH <b>63110</b> <b>W36A</b>	APCH CRS <b>004°</b>	Rwy Idg TDZE Arprt Elev	<b>5025</b> <b>298</b> <b>301</b>
--	-------------------------	-------------------------------	---

[USA]

RNP APCH - GPS

MISSED APPROACH: Climb to 2000 direct RKEMP and hold.

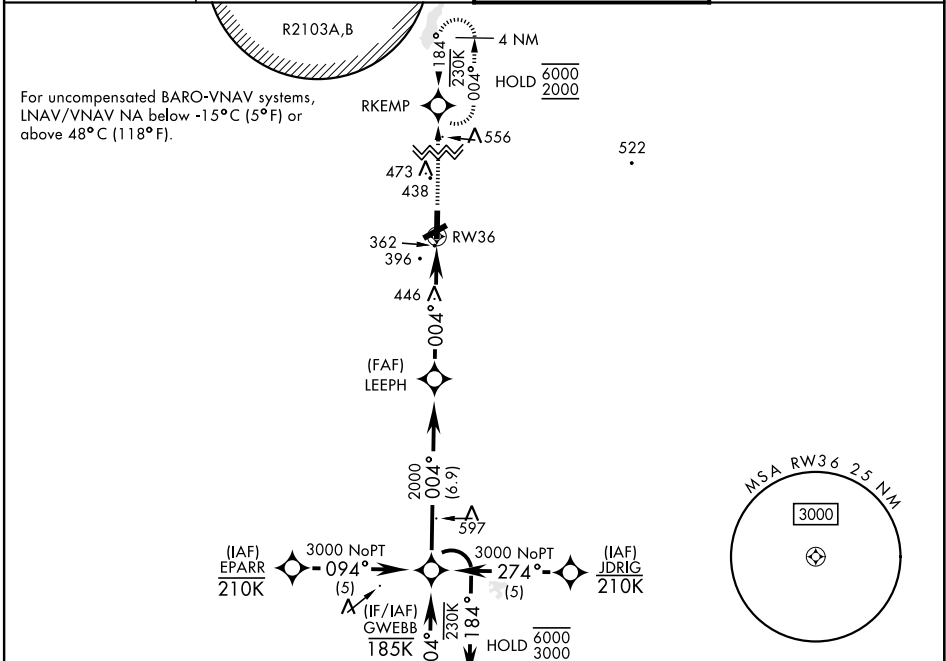
▼ \*Circling visibility reduction by helicopters not authorized.

ATIS  
**111.2 316.15**

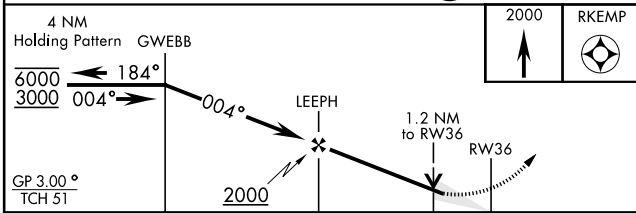
APP CON ★  
220°-340° **133.45 239.275**  
341°-120° **125.4 327.125**  
121°-219° **133.75 270.35**

TOWER ★  
**135.2 (CTAF) 248.55**

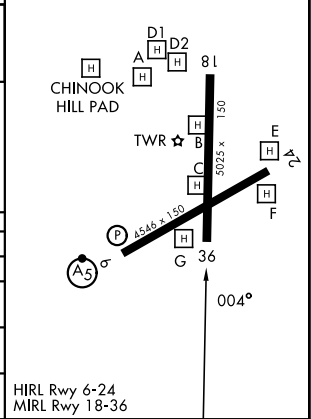
GND CON★  
**121.9 288.25**



ELEV	301	TDZE	298
------	-----	------	-----



ELEV	301	TDZE	298
------	-----	------	-----



CATEGORY	A	B	C	D
LPV DA	548-¾	250	(300-¾)	
LNAV/VNAV DA	557-¾	259	(300-¾)	
LNAV MDA	740-1	442 (500-1)	740-1½	442 (500-1½)
CIRCLING*	780-1 479 (500-1)	820-1 519 (600-1)	900-1½ 599 (600-1½)	900-2 599 (600-2)

HIRL Rwy 6-24  
MIRL Rwy 18-36

FORT RUCKER, ALABAMA

31° 17' N-85° 43' W

CAIRNS AAF (FORT RUCKER) (KOZR)

Amtd 2 26DEC24

# RNAV (GPS) RWY 36

SE-4, 11 JUN 2026 to 09 JUL 2026

SE-4, 11 JUN 2026 to 09 JUL 2026