

VOR RWY 24

VOR/DME OZR 111.2 Chan 49	APCH CRS 246°	Rwy Idg TDZE 298 Arprt Elev 301
---	-------------------------	--

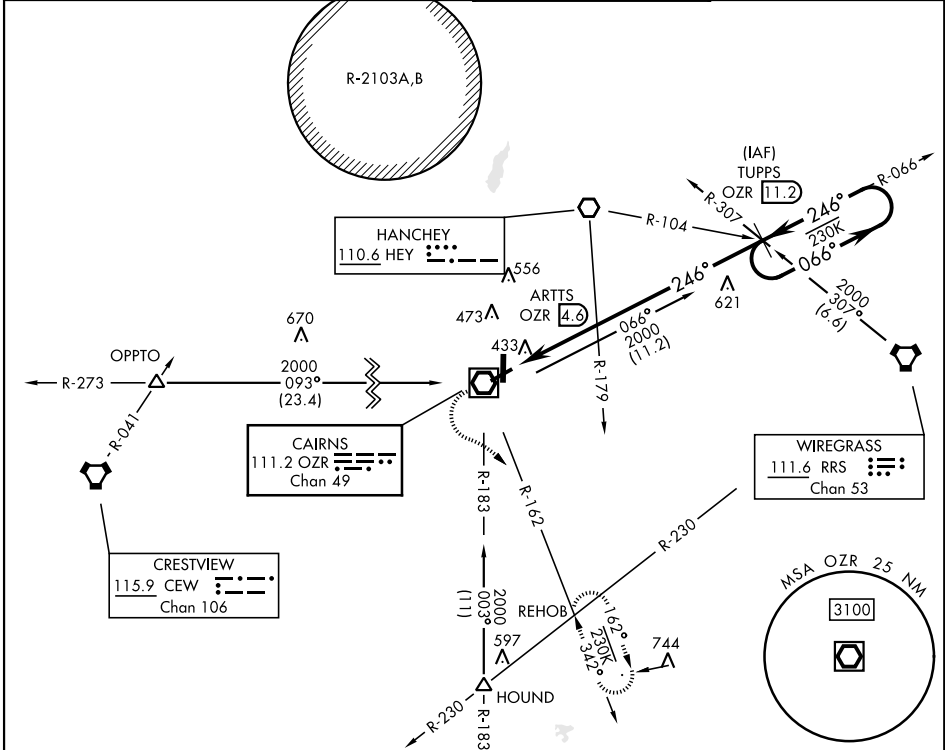
[USA]

CAIRNS AAF (FORT RUCKER) (KOZR)

▼ Procedure NA at night. Visibility reduction by helicopters NA.

MISSED APPROACH: Climb to 800 then climbing left turn to 2000 via OZR
 VOR/DME R-162 to REHOB INT and hold; or when directed by ATC, climb to 800 then climbing right turn heading 290° to 2000 within 10 NM (RADAR required).

ATIS 111.2 316.15	APP CON* 220°-340° 133.45 239.275 341°-120° 125.4 327.125 121°-219° 133.75 270.35	TOWER* 135.2 (CTAF) 248.55	GND CON* 121.9 288.25
-----------------------------	---	--------------------------------------	---------------------------------



SE-4, 11 JUN 2026 to 09 JUL 2026

SE-4, 11 JUN 2026 to 09 JUL 2026

ELEV 301		TDZE 298											
800	2000	REHOB											
		ARTTS OZR 4.6	TUPPS OZR 11.2 066°										
<table border="1"> <thead> <tr> <th>CATEGORY</th> <th>A</th> <th>B</th> <th>C</th> <th>D</th> </tr> </thead> <tbody> <tr> <td>S-24</td> <td>720-1 422 (500-1)</td> <td>820-1 519 (600-1)</td> <td>900-1½ 599 (600-½)</td> <td>900-2 599 (600-2)</td> </tr> </tbody> </table>		CATEGORY	A	B	C	D	S-24	720-1 422 (500-1)	820-1 519 (600-1)	900-1½ 599 (600-½)	900-2 599 (600-2)		
CATEGORY	A	B	C	D									
S-24	720-1 422 (500-1)	820-1 519 (600-1)	900-1½ 599 (600-½)	900-2 599 (600-2)									
FORT RUCKER, ALABAMA Amdt 13 13JUL23		CAIRNS AAF (FORT RUCKER) (KOZR) HIRL Rwy 6-24 MRL Rwy 18-36											

VOR RWY 24