

# VOR RWY 6

VOR/DME OZR <b>111.2</b> Chan <b>49</b>	APCH CRS <b>056°</b>	Rwy Idg TDZE Arprt Elev <b>4546</b> <b>298</b> <b>301</b>
---	-------------------------	--

[USA]

CAIRNS AAF (FORT RUCKER) (KOZR)

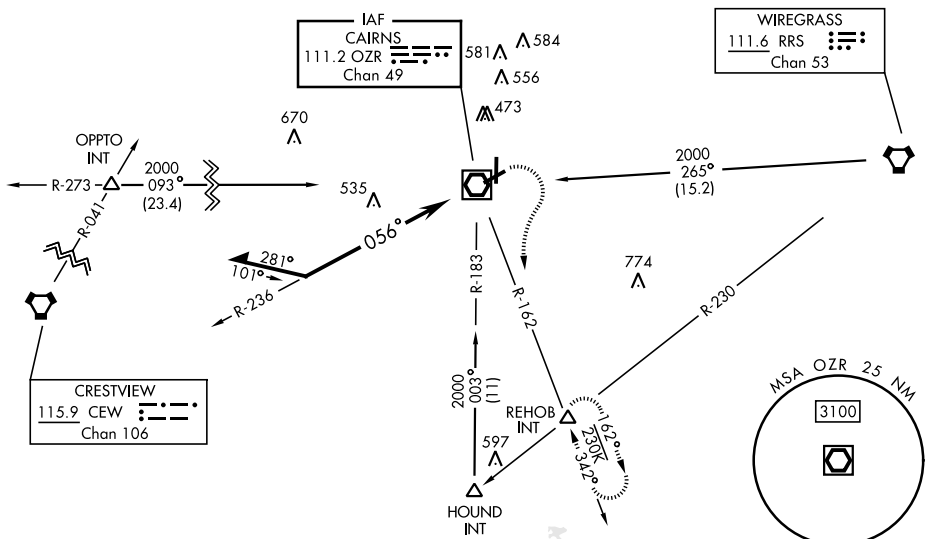
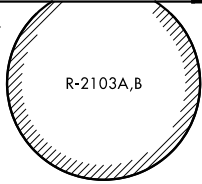
▼ \* When ALS inop, increase CAT AB RVR to 55, vis to 1 mile; CAT CD vis to 1½ miles.  
 \*\* Circling to RWY 24 at night not authorized.



MISSED APPROACH: Climbing right turn to 2000 via OZR VOR/DME R-162 to REHOB INT and hold; or when directed by ATC, climbing left turn to 2000 heading 290° within 10 NM (RADAR required).

ATIS <b>111.2 316.15</b>	APP CON★ 220°-340° <b>133.45 239.275</b> 341°-120° <b>125.4 327.125</b> 121°-219° <b>133.75 270.35</b>	TOWER★ <b>135.2 (CTAF) 248.55</b>	GND CON★ <b>121.9 288.25</b>
-----------------------------	---	--------------------------------------	---------------------------------

Visibility reduction by helicopters NA.



SE-4, 11 JUN 2026 to 09 JUL 2026

SE-4, 11 JUN 2026 to 09 JUL 2026

ELEV 301	TDZE 298
----------	----------

CATEGORY	A	B	C	D
S-6 *	840/24 542 (600-½)		840/60 542 (600-1½)	
CIRCLING **	840-1 539 (600-1)		900-1½ 599 (600-1½)	900-2 599 (600-2)

# VOR RWY 6