

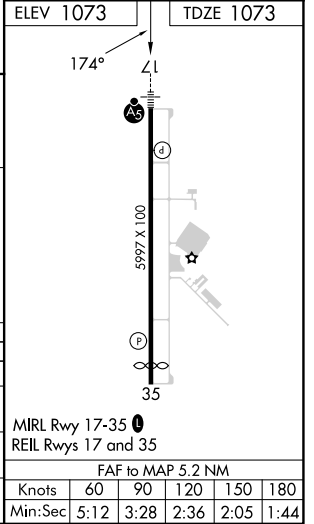
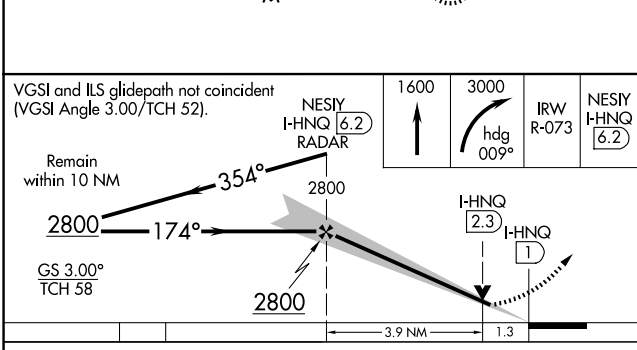
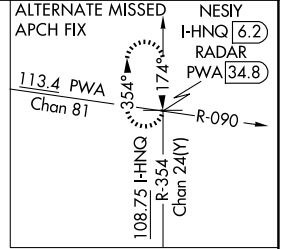
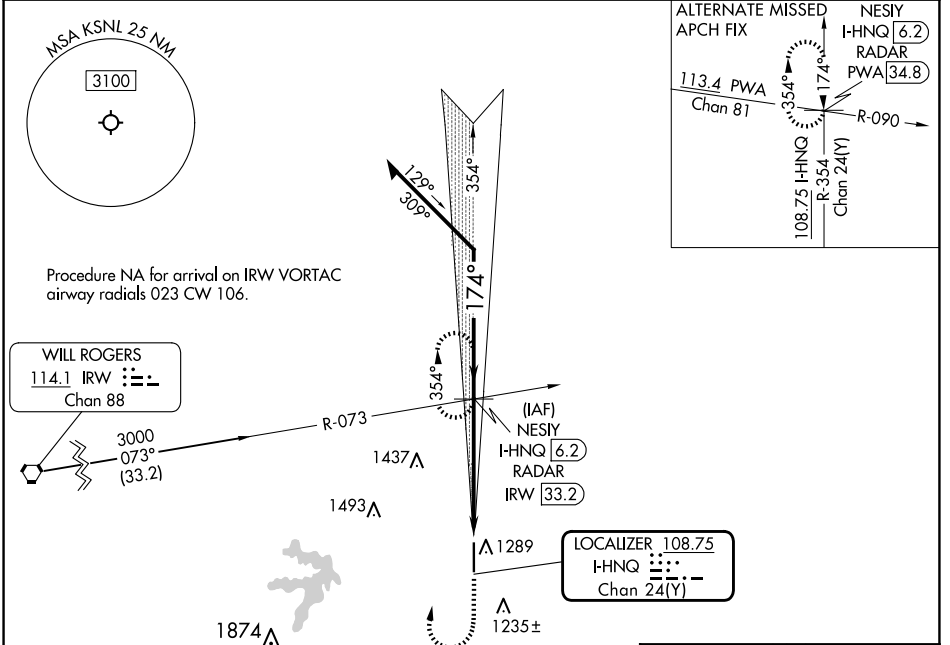
LOC/DME I-HNQ 108.75 Chan 24(Y)	APP CRS 174°	Rwy Ldg TDZE 5997 1073 Apt Elev 1073
---	------------------------	--

ILS or LOC RWY 17

SHAWNEE RGNL (SNL)

DME or RADAR required.	MALSR 	MISSED APPROACH: Climb to 1600 then climbing right turn to 3000 on heading 009° and IRW R-073 to NESIY/I-HNQ 6.2 DME/RADAR and hold, continue climb-in-hold to 3000.
------------------------	-----------	--

AWOS-3PT 118.275	OKE CITY APP CON 120.45 288.325	UNICOM 122.7 (CTAF)
----------------------------	---	-------------------------------



CATEGORY	A	B	C	D
S-ILS 17	1273-1/2 200 (200-1/2)			NA
S-LOC 17	1520-1/2	447 (500-1/2)	1520-7/8 447 (500-7/8)	NA
CIRCLING	1600-1 527 (600-1)		1640-1/2 567 (600-1/2)	NA

SC-1, 11 JUN 2026 to 09 JUL 2026

SC-1, 11 JUN 2026 to 09 JUL 2026